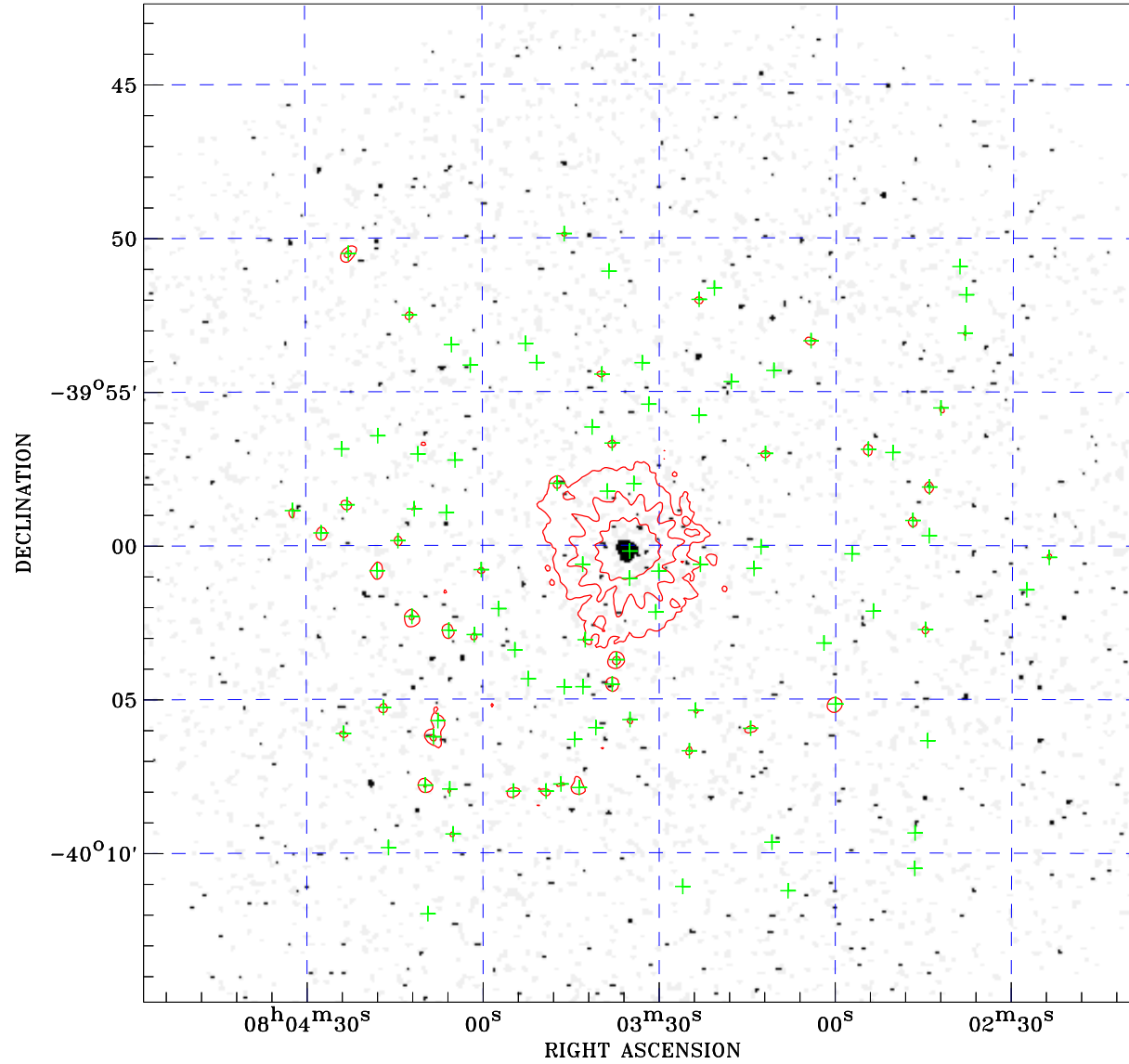



PDF XMM ROSAT image ACDS V10.0



ROSAT image gray scale (Log) :

 $\langle 4.009\text{E}-04$ $\rangle 8.614\text{E}-04$
 (counts s⁻¹)

⊙ Epic image contour
 levels at 2, 7 and 30 σ

+ Detected Epic sources

Principal Investigator :
 Dr Fred Jansen

XMM target name :
 Zeta Puppis

Observation ID :
 0157160401

Epic image :
 α : 08 03 32.81
 δ : -39 58 37.7
 Energy band : 0.2–12.0 keV
 MOS1 : 42124 s
 MOS2 : 42105 s
 PN : 24290 s

Contour levels (counts) :
 2 σ :3.213E+00 7 σ :9.074E+00
 30 σ 3.603E+01

Nearest ROSAT image
 from Epic image center :
 Observation : 200178h-0
 Instrument : HRI
 α : 08 03 44.34
 δ : -40 01 36.2

Other ROSAT images :
 None

XMM SSC
 May 2 21:31:00 2019