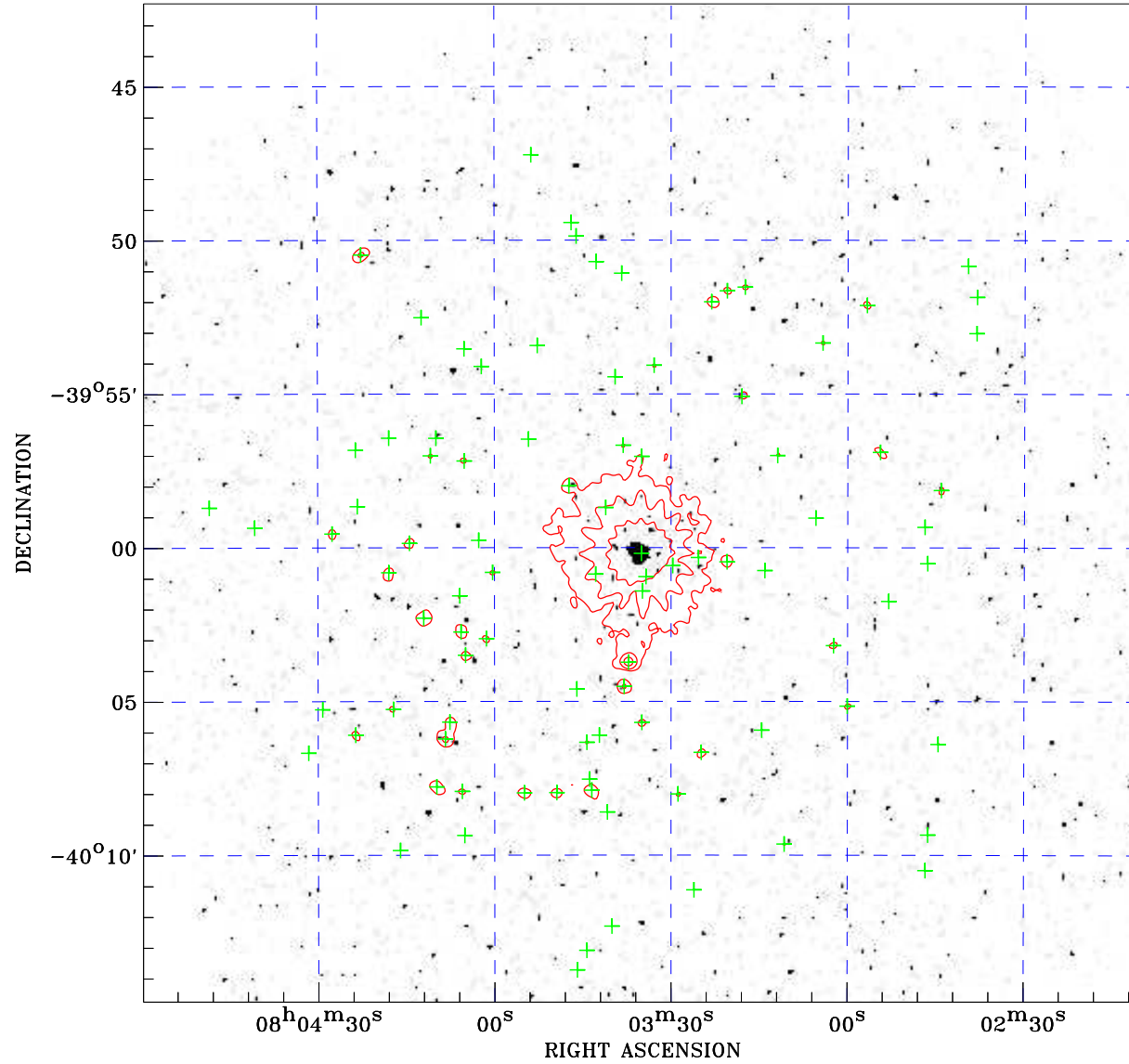


# PDF XMM ROSAT image ACDS V10.0



Principal Investigator :  
Dr Fred Jansen

XMM target name :  
Zeta Puppis

Observation ID :  
0157160901


Epic image :  
 $\alpha$  : 08 03 34.82  
 $\delta$  : -39 58 33.0  
 Energy band : 0.2–12.0 keV  
 MOS1 : 43142 s  
 MOS2 : 43132 s  
 PN : 22624 s

Contour levels (counts) :  
 $2\sigma$  :2.819E+00  $7\sigma$  :8.164E+00  
 $30\sigma$  :3.275E+01

Nearest ROSAT image  
from Epic image center :  
 Observation : 200178h-0  
 Instrument : HRI  
 $\alpha$  : 08 03 44.34  
 $\delta$  : -40 01 36.2

Other ROSAT images :  
None

XMM SSC  
Apr 27 01:59:37 2019

ROSAT image gray scale (Log) :  
  
 $\langle 4.022\text{E}-04$   $\rangle 8.285\text{E}-04$   
 (counts s<sup>-1</sup>)

⊙ Epic image contour  
levels at 2, 7 and 30 $\sigma$

+ Detected Epic sources