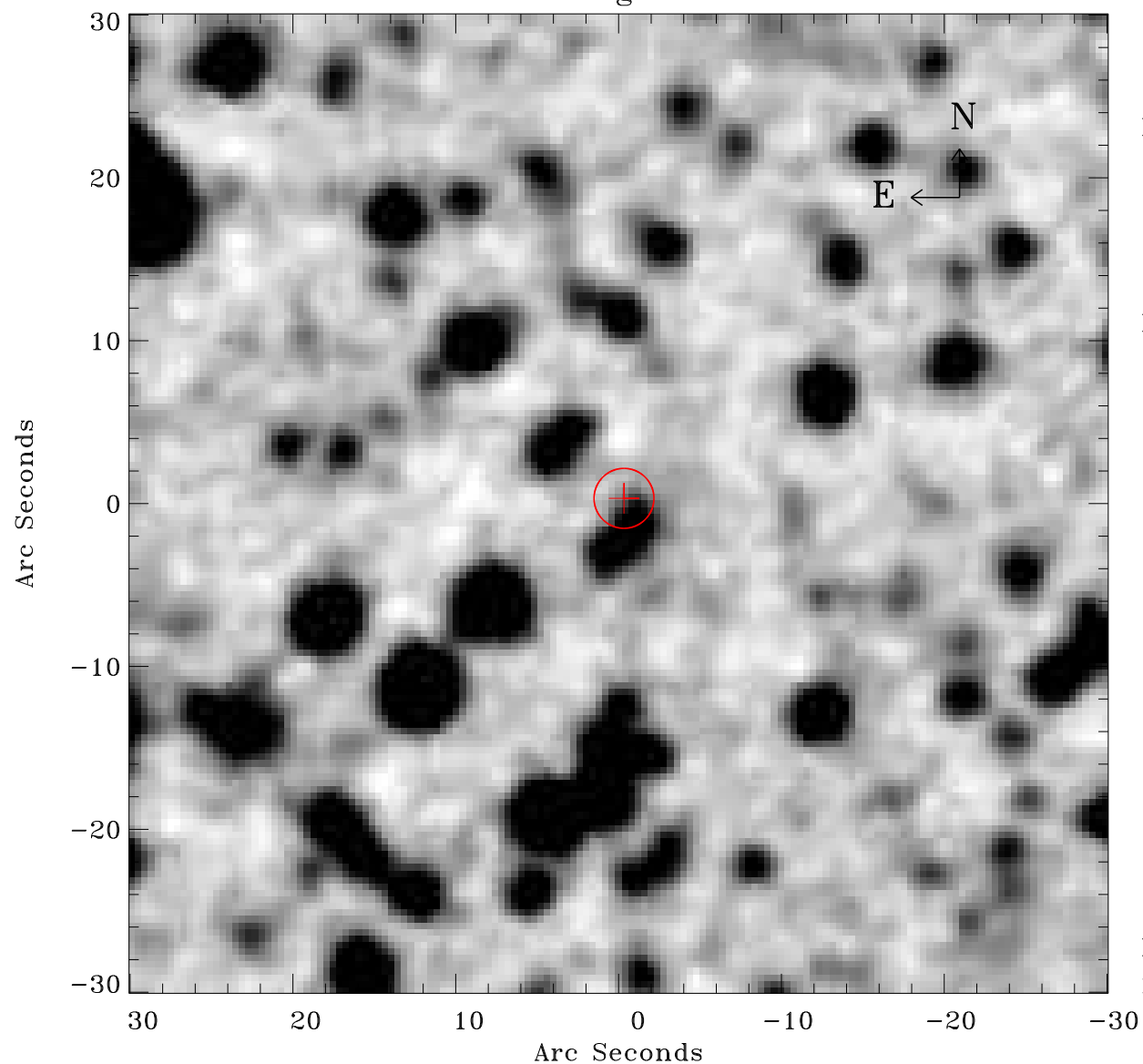


# EPIC source finding chart ACDS V10.0



Principal Investigator :

Mr Bruno Altieri

XMM target name :

SEP-r731

OBS ID : 162160301

Source number : 6

X-ray coordinates :

$\alpha$  : 05 58 36.22

$\delta$  : -66 25 54.1

Center coordinates :

$\alpha$  : 05 58 36.21

$\delta$  : -66 25 54.0

Plate reference :

Origin : CDS HIPs Network

Plate : MAMA srcj

Pixel : 0.40 "/pix

Error circle :

$R_{90}$  (") : 1.8

XMM SSC

May 3 16:03:25 2019