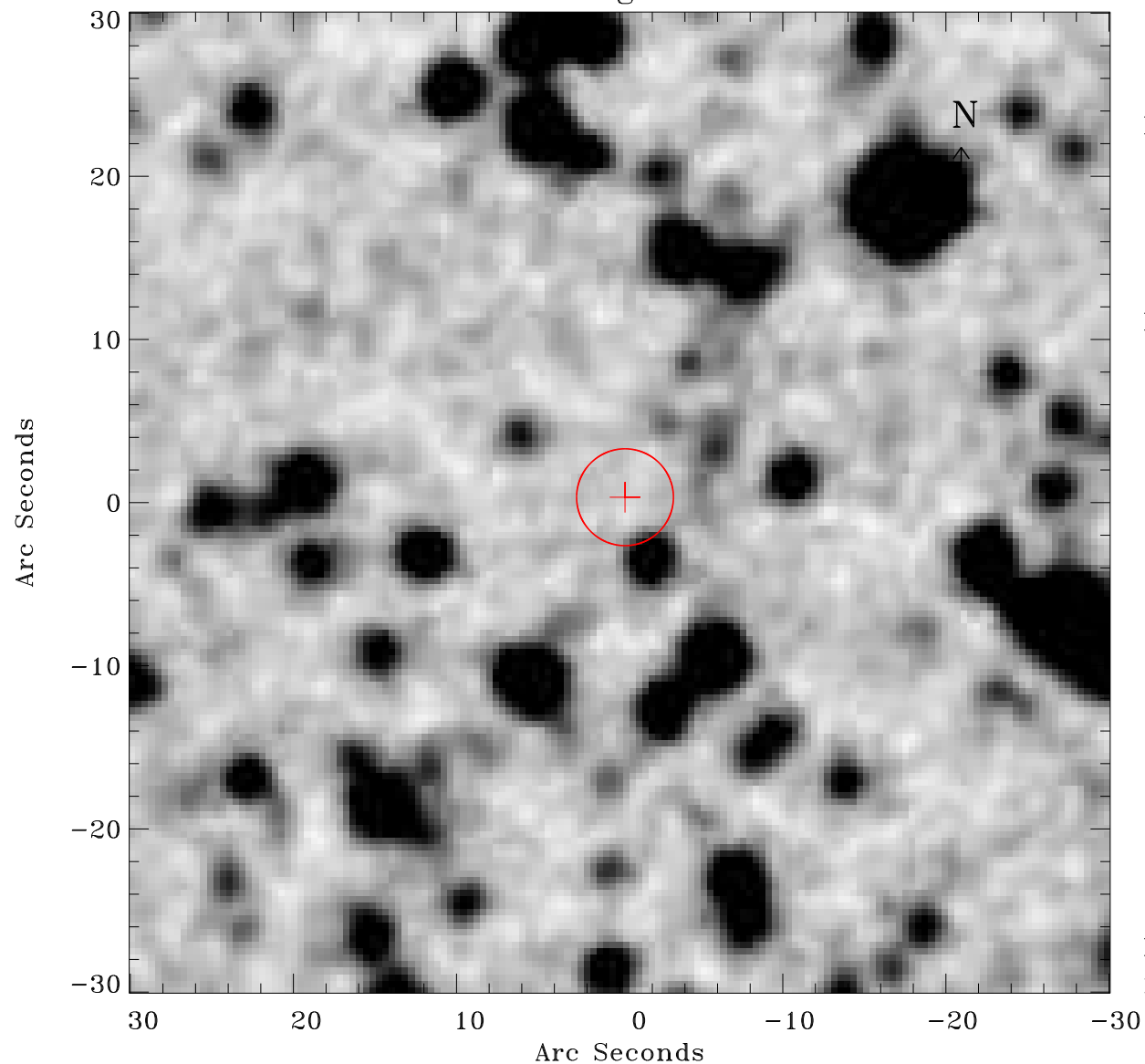


# EPIC source finding chart ACDS V10.0



Principal Investigator :

Mr Bruno Altieri

XMM target name :

SEP-r731

OBS ID : 162160301

Source number : 30

X-ray coordinates :

$\alpha$  : 05 58 18.49

$\delta$  : -66 42 44.6

Center coordinates :

$\alpha$  : 05 58 18.48

$\delta$  : -66 42 44.5

Plate reference :

Origin : CDS HIPs Network

Plate : MAMA srcj

Pixel : 0.40 "/pix

Error circle :

$R_{90}$  (") : 2.9

XMM SSC

May 3 16:03:21 2019