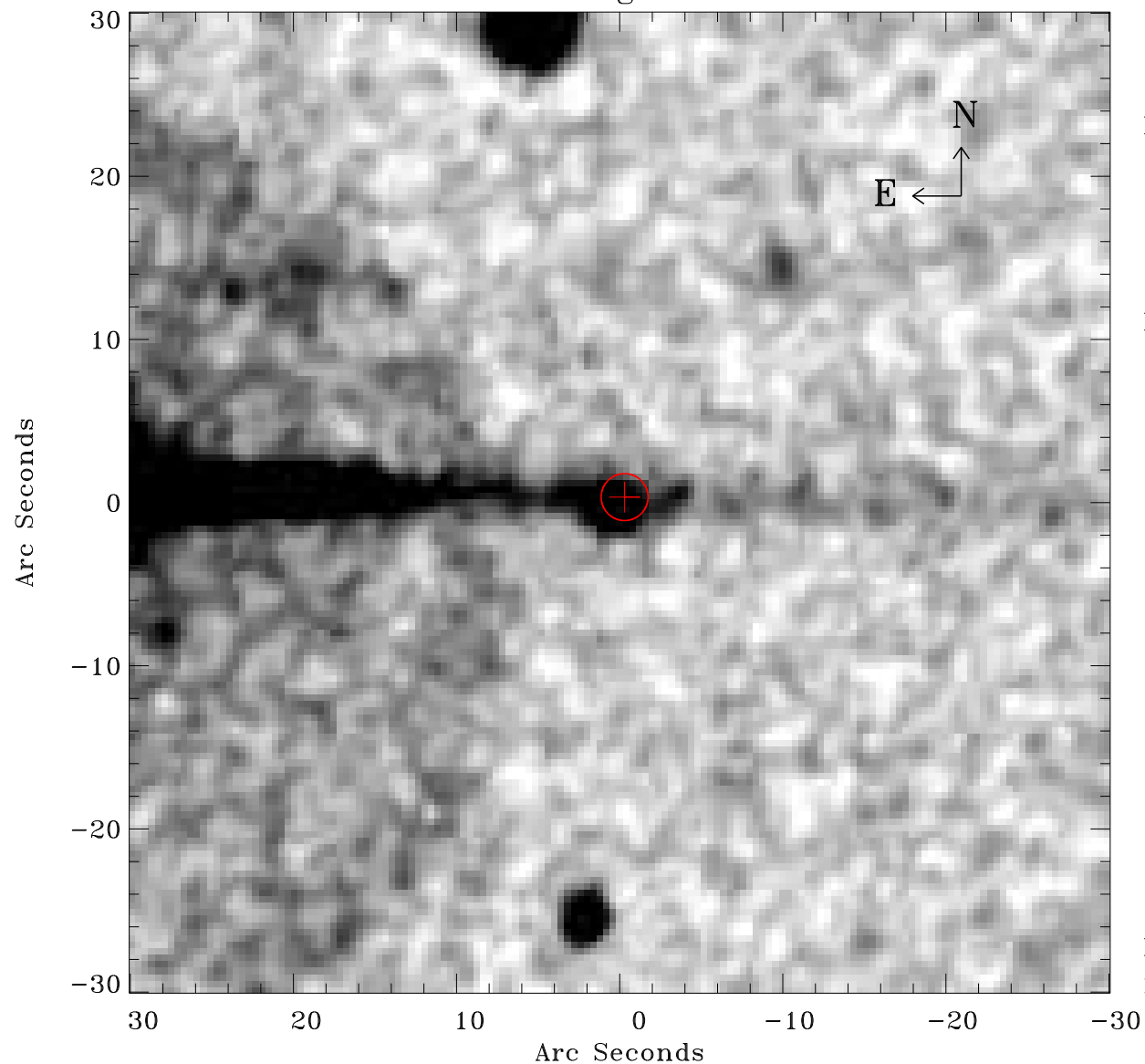


# EPIC source finding chart ACDS V10.0



Principal Investigator :

Dr GINEVRA TRINCHIERI

XMM target name :

ESO 2400100

OBS ID : 200780201

Source number : 17

X-ray coordinates :

$\alpha$  : 23 36 44.03

$\delta$  : -47 26 04.5

Center coordinates :

$\alpha$  : 23 36 44.02

$\delta$  : -47 26 04.4

Plate reference :

Origin : CDS HIPs Network

Plate : MAMA srcj

Pixel : 0.40 "/pix

Error circle :

$R_{90}$  (") : 1.4

XMM SSC

May 1 18:59:39 2019