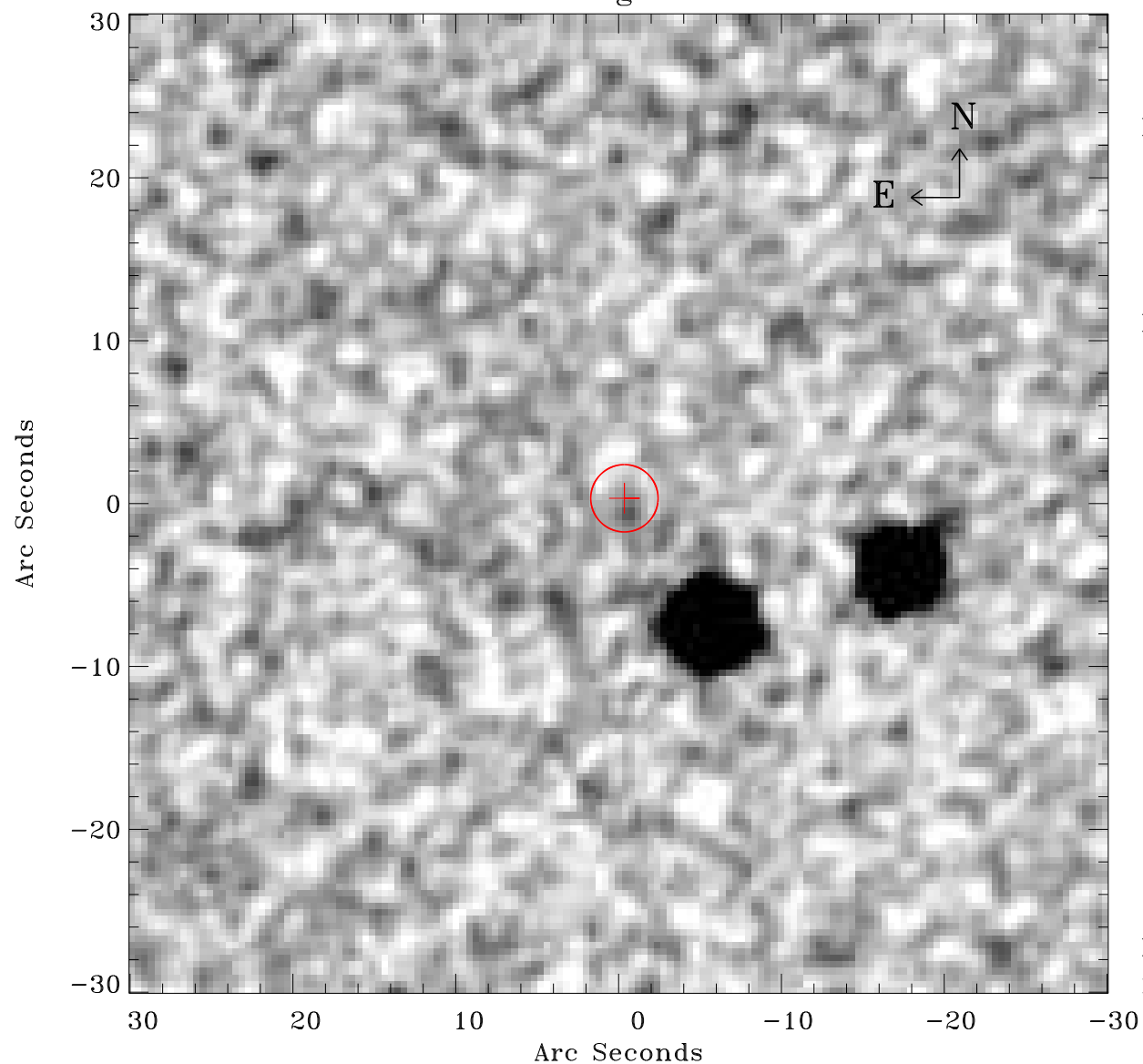


# EPIC source finding chart ACDS V10.0



Principal Investigator :

Dr GINEVRA TRINCHIERI

XMM target name :

ESO 2400100

OBS ID : 200780201

Source number : 78

X-ray coordinates :

$\alpha$  : 23 37 53.72

$\delta$  : -47 36 45.4

Center coordinates :

$\alpha$  : 23 37 53.71

$\delta$  : -47 36 45.3

Plate reference :

Origin : CDS HIPs Network

Plate : MAMA srcj

Pixel : 0.40 "/pix

Error circle :

$R_{90}$  (") : 2.1

XMM SSC

May 1 19:01:05 2019