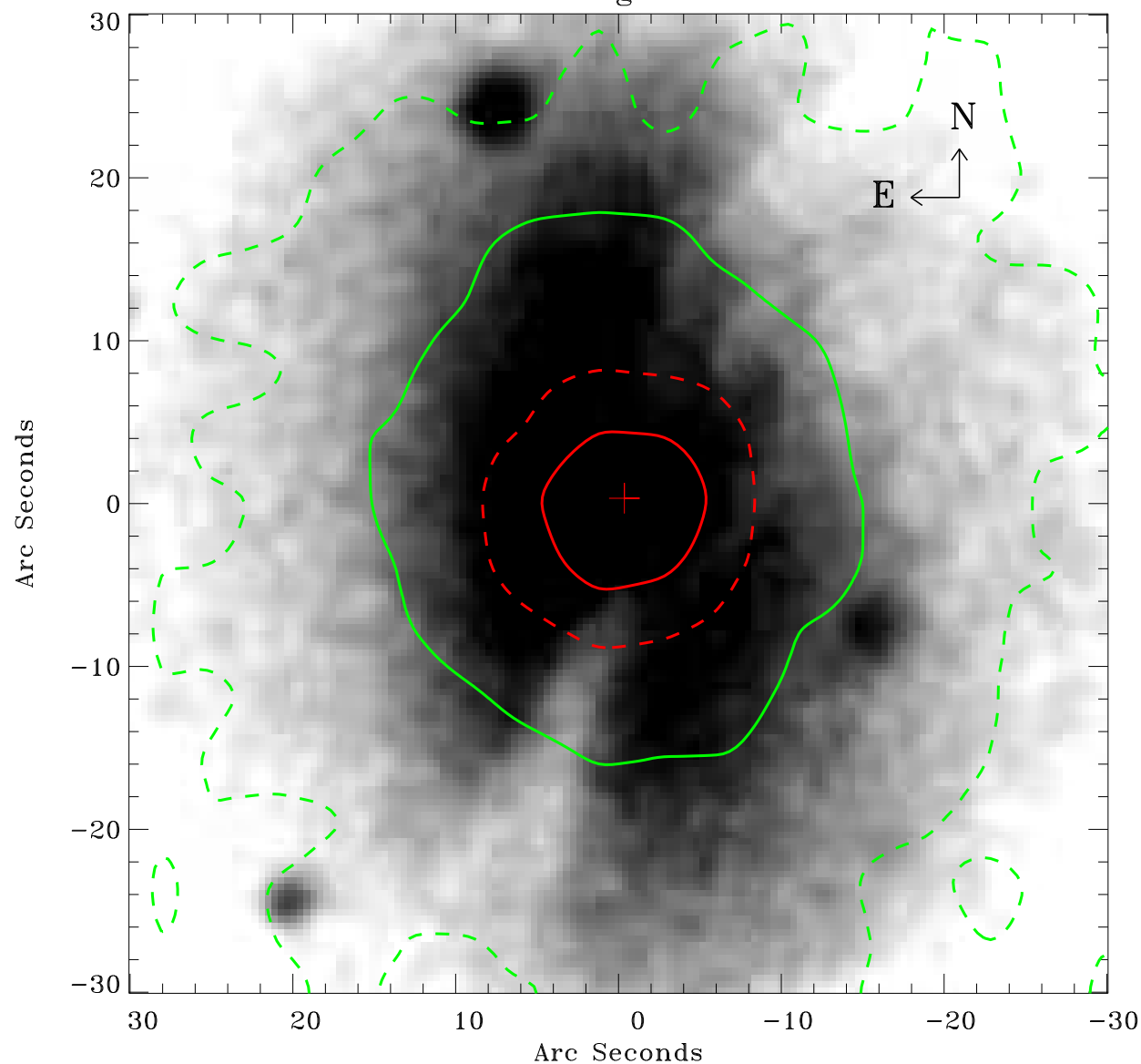


# EPIC source finding chart ACDS V10.0



Principal Investigator :

Dr GINEVRA TRINCHIERI

XMM target name :

NGC 7070A

OBS ID : 200780301

Source number : 1

X-ray coordinates :

$\alpha$  : 21 31 47.29

$\delta$  : -42 50 51.5

Center coordinates :

$\alpha$  : 21 31 47.28

$\delta$  : -42 50 51.4

Plate reference :

Origin : CDS HIPs Network

Plate : MAMA srcj

Pixel : 0.40 "/pix

Contour levels (counts) :

6.66E+00 3.10E+01

1.33E+02 3.41E+02

XMM SSC

May 2 10:31:30 2019