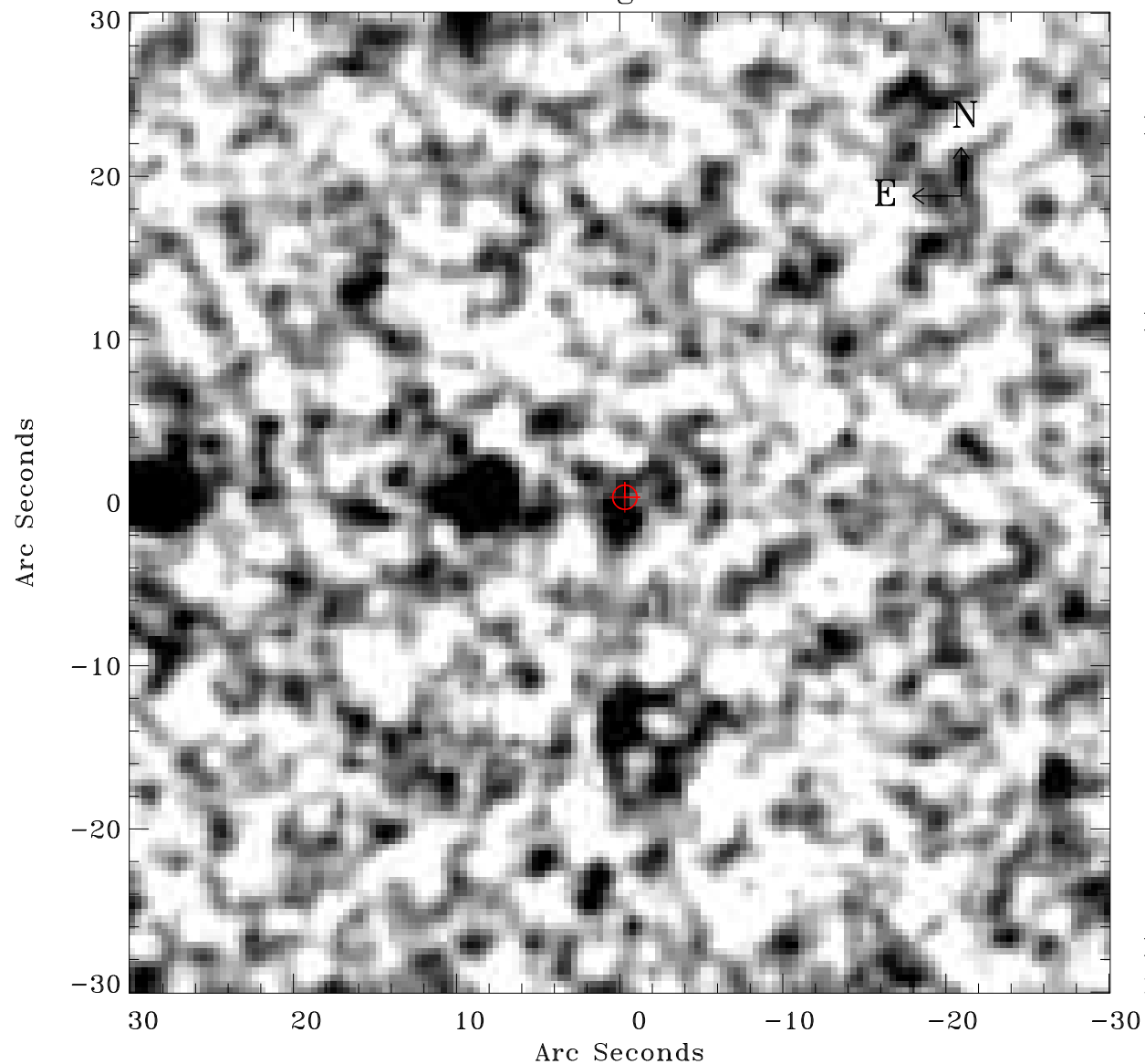


# EPIC source finding chart ACDS V10.0



Principal Investigator :

Dr GINEVRA TRINCHIERI

XMM target name :

NGC 7070A

OBS ID : 200780301

Source number : 5

X-ray coordinates :

$\alpha$  : 21 31 38.34

$\delta$  : -42 45 11.5

Center coordinates :

$\alpha$  : 21 31 38.33

$\delta$  : -42 45 11.4

Plate reference :

Origin : CDS HIPs Network

Plate : MAMA srcj

Pixel : 0.40 "/pix

Error circle :

$R_{90}$  (") : 0.7

XMM SSC

May 2 10:31:18 2019