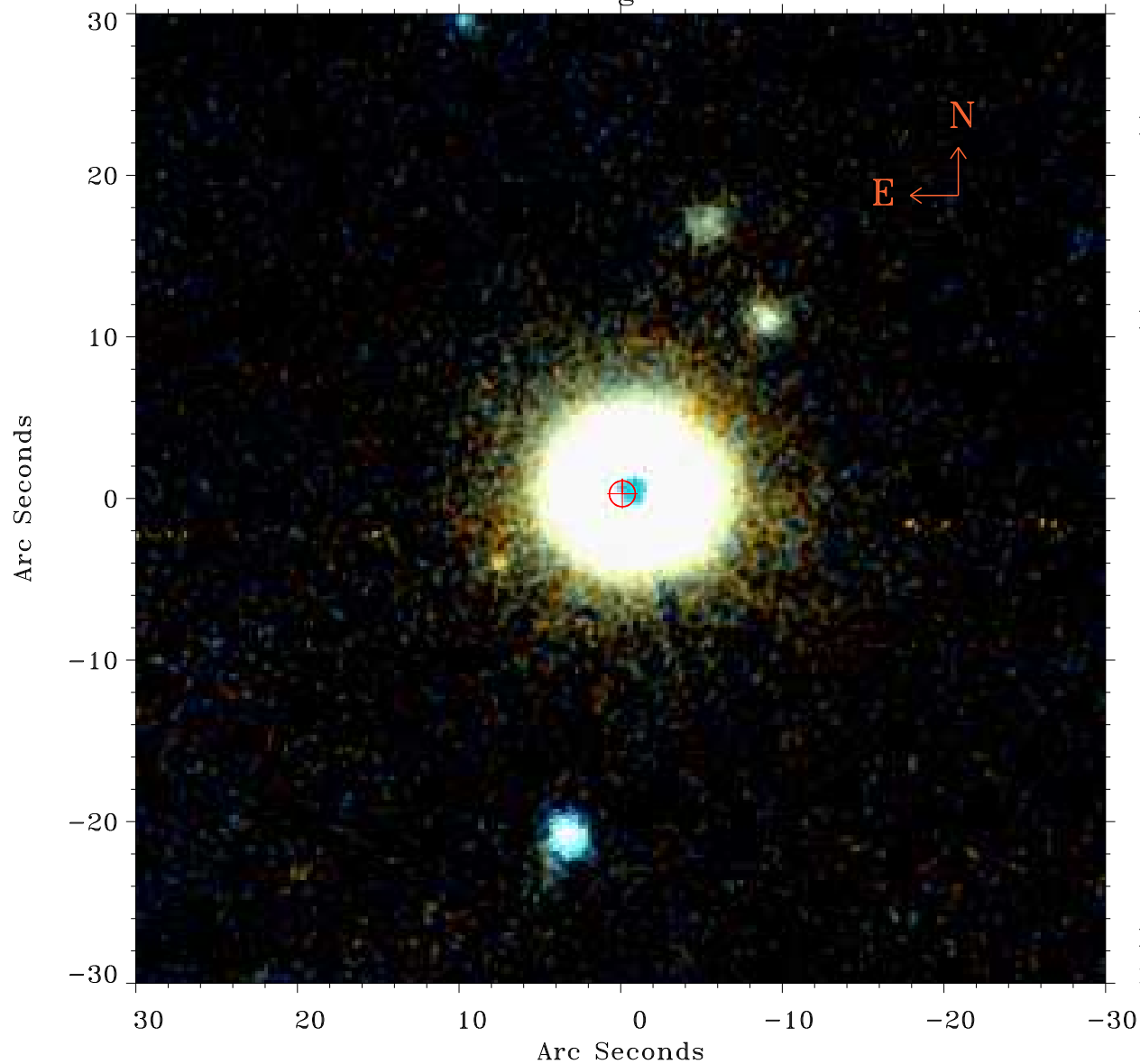


# EPIC source finding chart ACDS V10.0



Principal Investigator :  
Dr CAROLIN CRAWFORD

XMM target name :  
IRAS F15307+3252

OBS ID : 201010101  
Source number : 1

X-ray coordinates :  
 $\alpha$  : 15 31 58.99  
 $\delta$  : +32 48 26.0

Center coordinates :  
 $\alpha$  : 15 31 58.98  
 $\delta$  : +32 48 25.9

Plate reference :  
Origin : PanSTARRS-DR1

Color coding :  
z band ●  
(z+g)/2 ●  
g band ●

Error:  
R90 : 0.8 arsec

XMM SSC  
May 2 14:49:32 2019