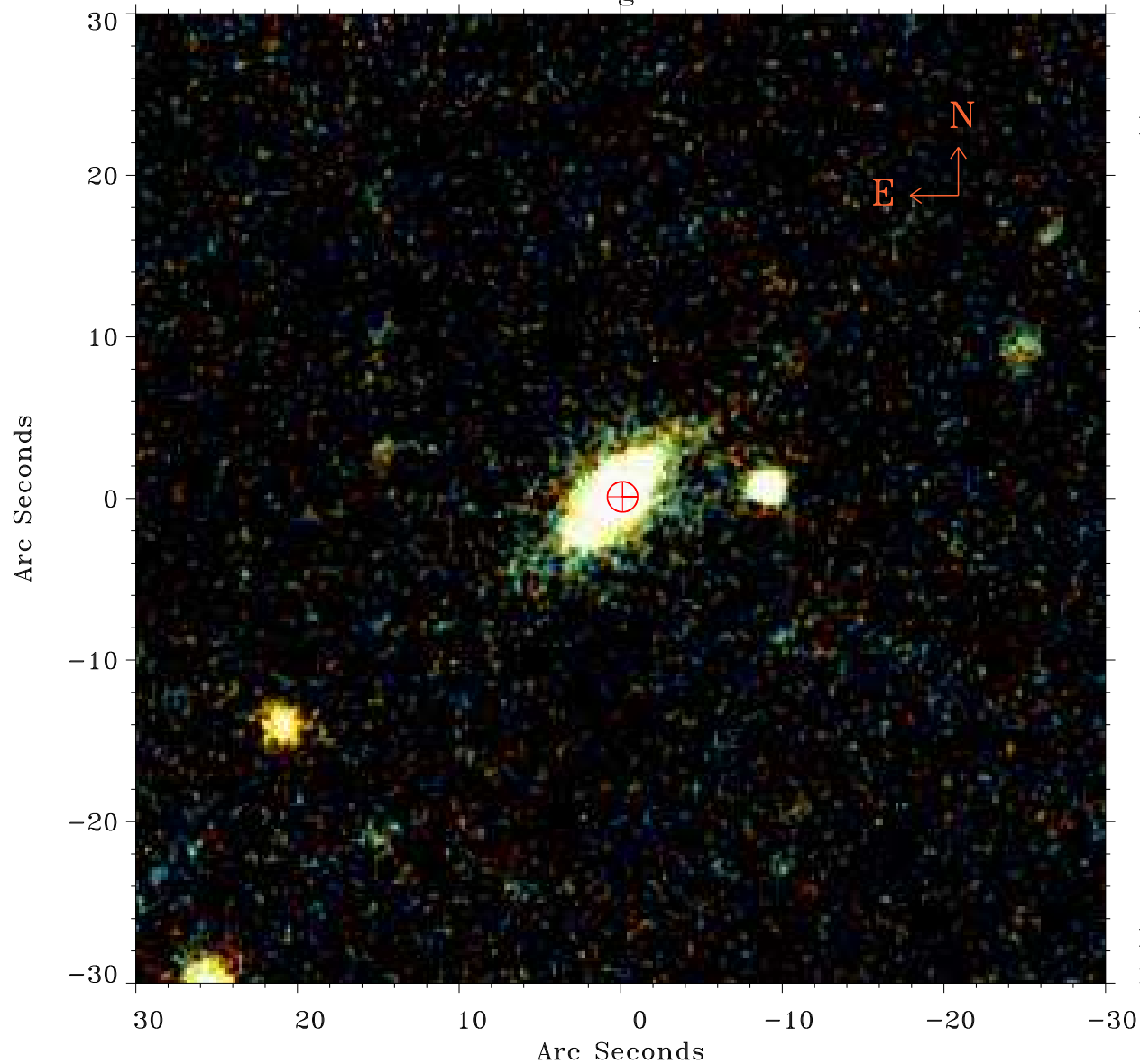


EPIC source finding chart ACDS V10.0



Principal Investigator :

Dr CAROLIN CRAWFORD

XMM target name :

IRAS F15307+3252

OBS ID : 201010101

Source number : 2

X-ray coordinates :

α : 15 33 40.92

δ : +32 42 10.6

Center coordinates :

α : 15 33 40.91

δ : +32 42 10.7

Plate reference :

Origin : PanSTARRS-DR1

Color coding :

z band ●

(z+g)/2 ●

g band ●

Error:

R90 : 0.9 arsec

XMM SSC

May 2 14:53:47 2019