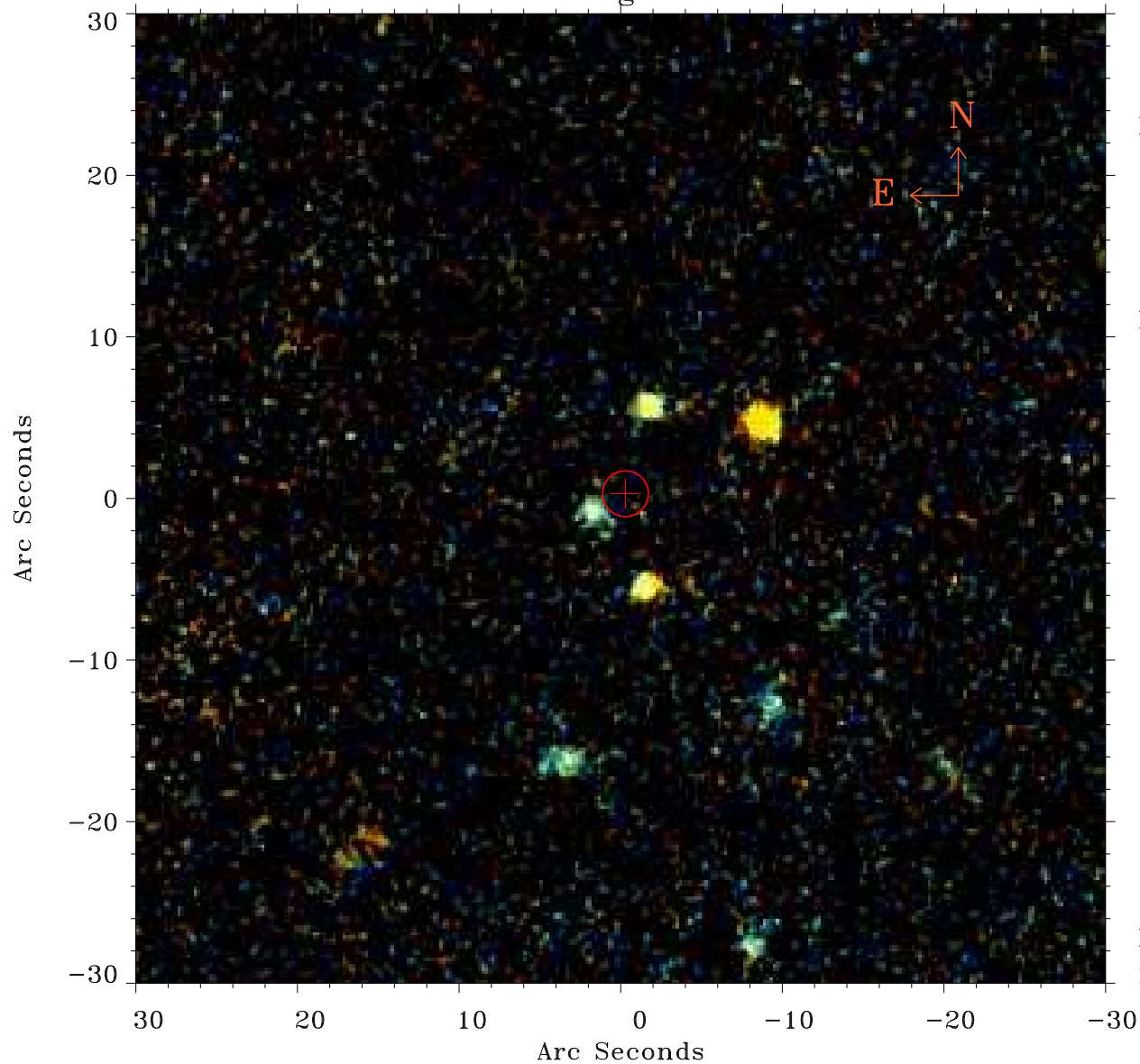


EPIC source finding chart ACDS V10.0



Principal Investigator :

Dr CAROLIN CRAWFORD

XMM target name :

IRAS F15307+3252

OBS ID : 201010101

Source number : 10

X-ray coordinates :

α : 15 32 22.87

δ : +32 40 27.7

Center coordinates :

α : 15 32 22.88

δ : +32 40 27.6

Plate reference :

Origin : PanSTARRS-DR1

Color coding :

z band ●

(z+g)/2 ●

g band ●

Error:

R90 : 1.4 arcsec

XMM SSC

May 2 14:50:17 2019