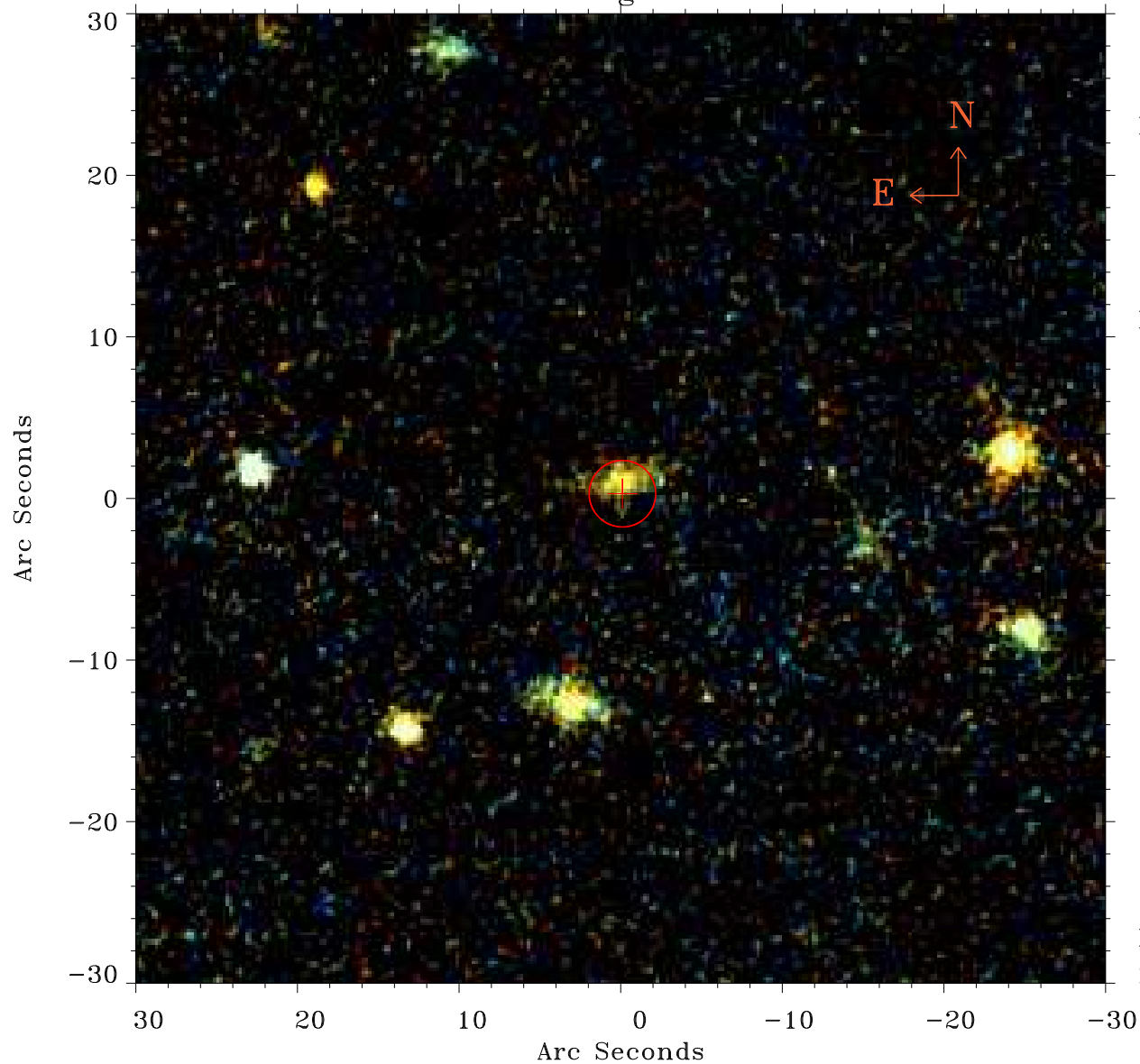


EPIC source finding chart ACDS V10.0



Principal Investigator :

Dr CAROLIN CRAWFORD

XMM target name :

IRAS F15307+3252

OBS ID : 201010101

Source number : 17

X-ray coordinates :

α : 15 31 46.19

δ : +32 41 45.9

Center coordinates :

α : 15 31 46.18

δ : +32 41 45.8

Plate reference :

Origin : PanSTARRS-DR1

Color coding :

z band ●

(z+g)/2 ●

g band ●

Error:

R90 : 2.1 arsec

XMM SSC

May 2 14:49:04 2019