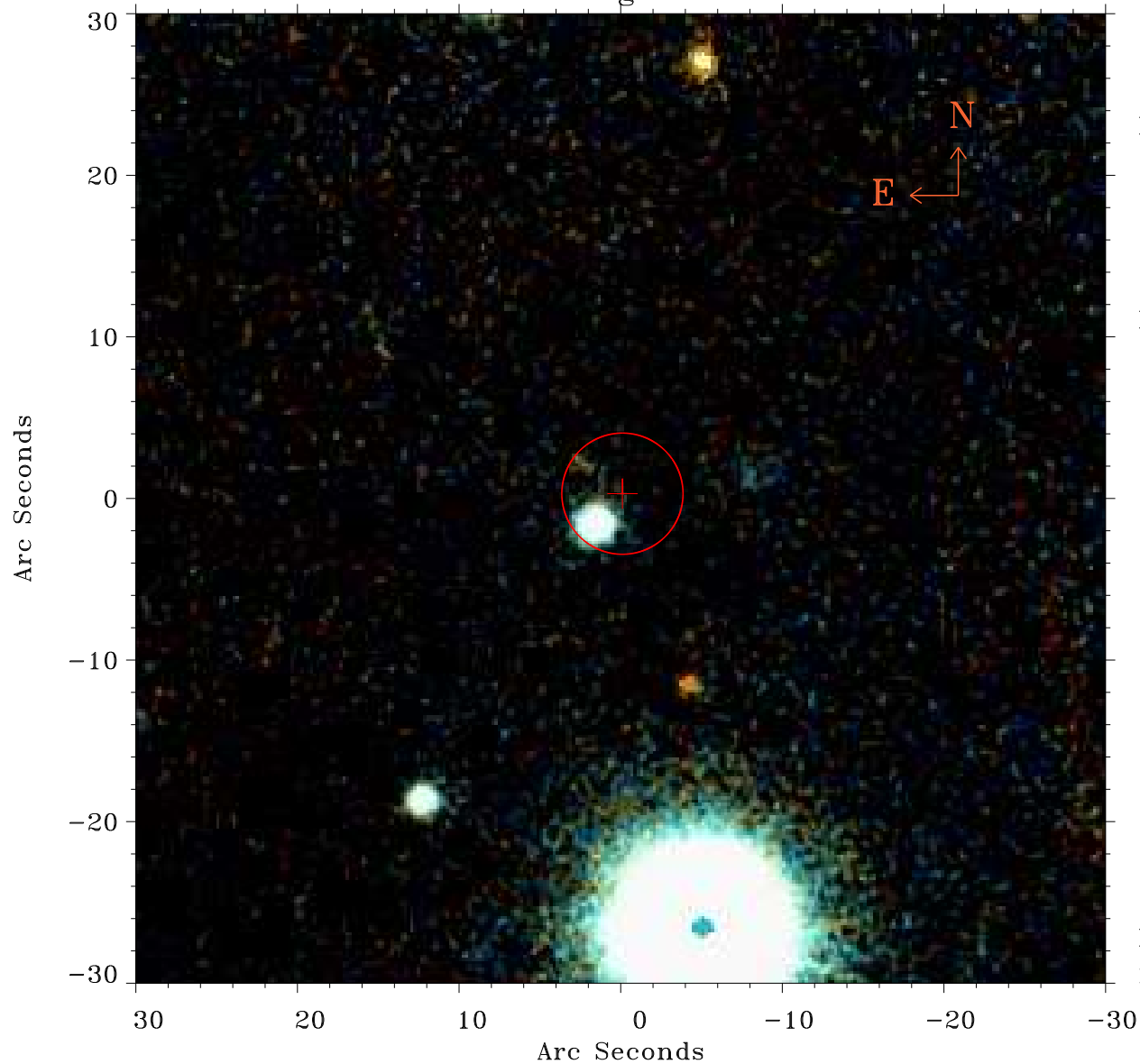


EPIC source finding chart ACDS V10.0



Principal Investigator :

Dr CAROLIN CRAWFORD

XMM target name :

IRAS F15307+3252

OBS ID : 201010101

Source number : 31

X-ray coordinates :

α : 15 33 53.89

δ : +32 44 44.2

Center coordinates :

α : 15 33 53.88

δ : +32 44 44.2

Plate reference :

Origin : PanSTARRS-DR1

Color coding :

z band ●

(z+g)/2 ●

g band ●

Error:

R90 : 3.7 arsec

XMM SSC

May 2 14:54:03 2019