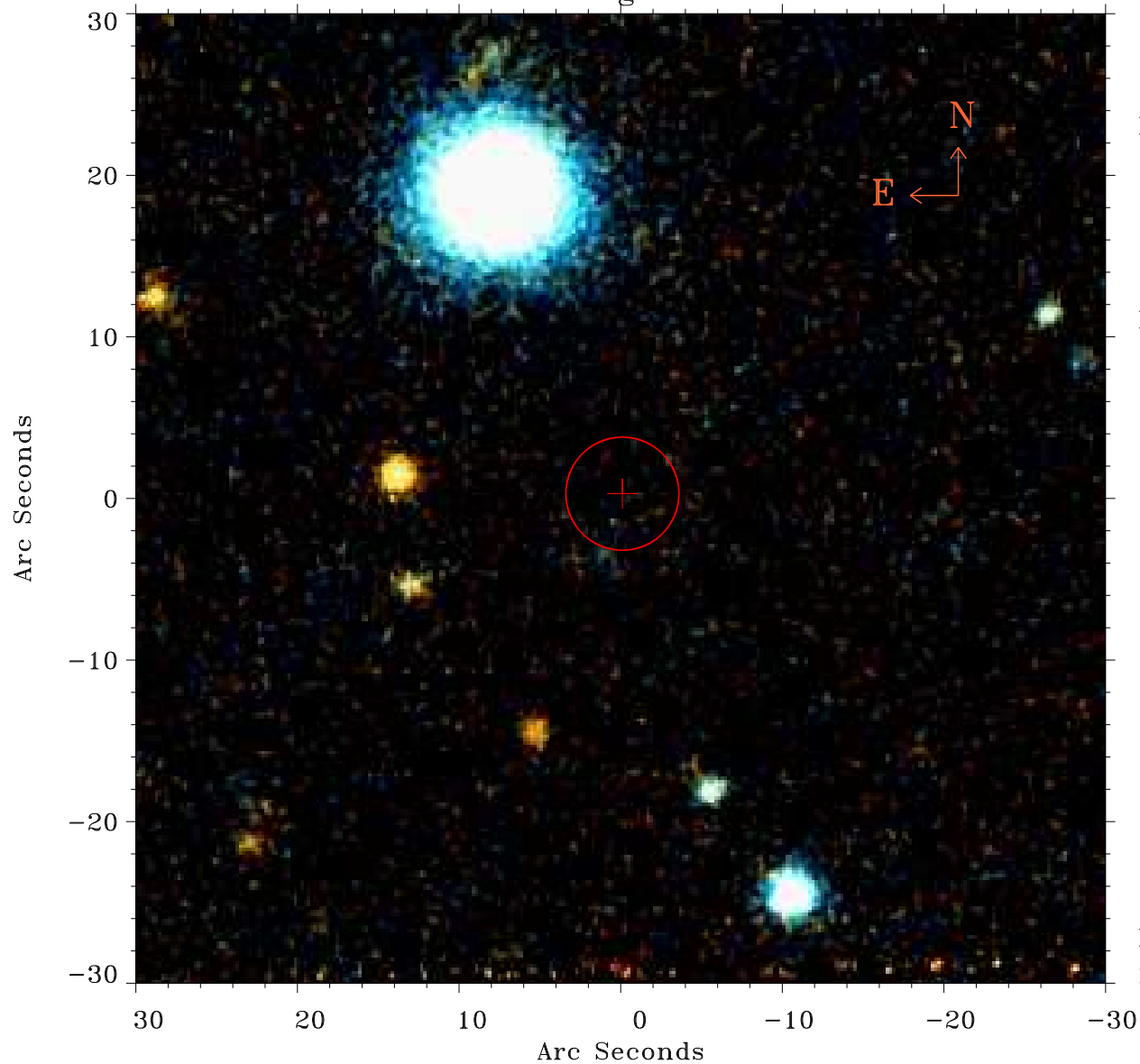


# EPIC source finding chart ACDS V10.0



Principal Investigator :

Dr CAROLIN CRAWFORD

XMM target name :

IRAS F15307+3252

OBS ID : 201010101

Source number : 51

X-ray coordinates :

$\alpha$  : 15 33 06.97

$\delta$  : +32 48 45.2

Center coordinates :

$\alpha$  : 15 33 06.97

$\delta$  : +32 48 45.1

Plate reference :

Origin : PanSTARRS-DR1

Color coding :

z band ●

(z+g)/2 ●

g band ●

Error:

R90 : 3.5 arsec

XMM SSC

May 2 14:52:18 2019