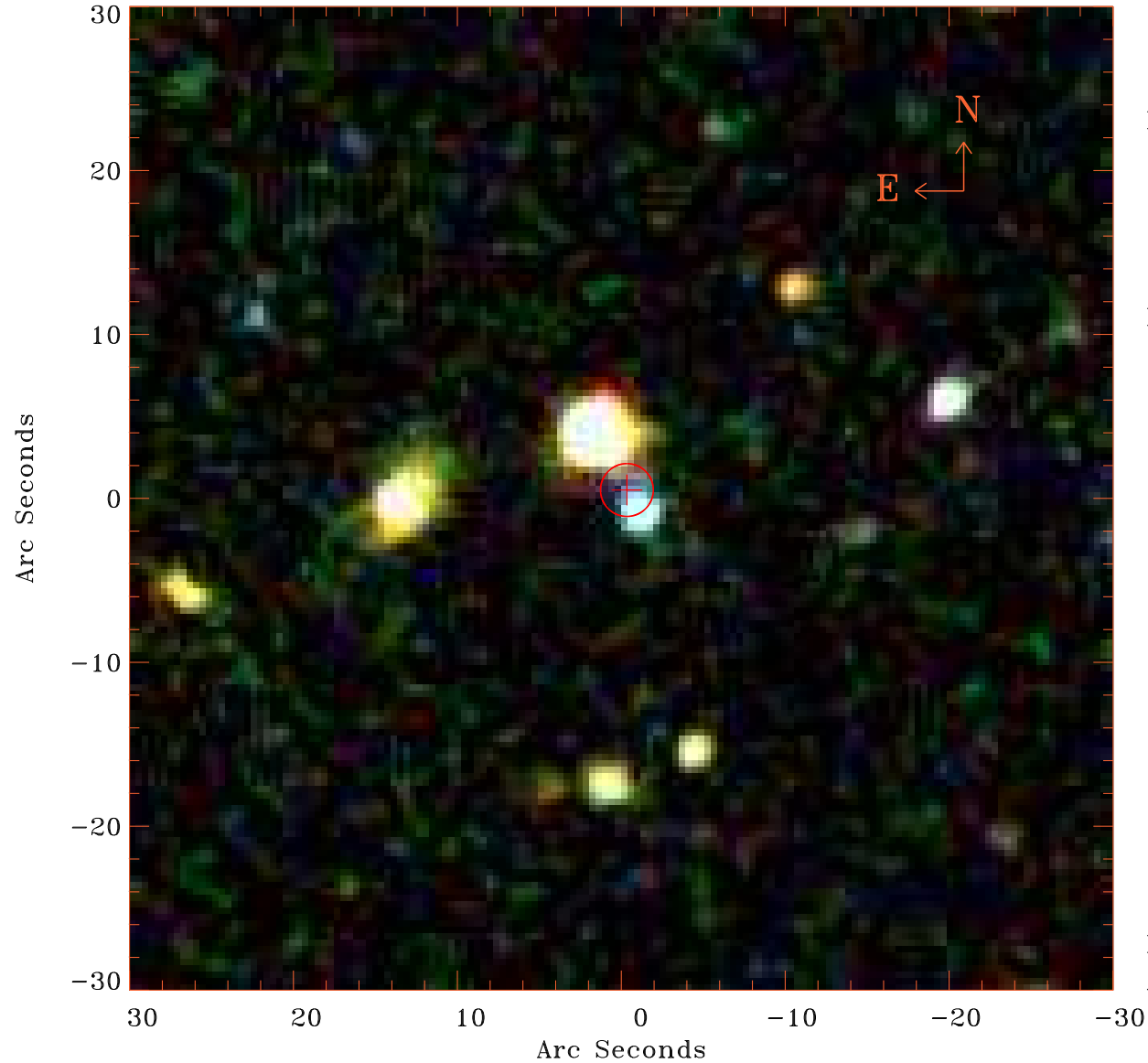


EPIC source finding chart V10.0



Principal Investigator :
Dr PASQUALE MAZZOTTA

XMM target name :
2PI0.095J1013.9-000

OBS ID : 201750401
Source number : 16

X-ray coordinates :
 α : 10 14 05.73
 δ : -00 06 30.3

Center coordinates :
 α : 10 14 05.73
 δ : -00 06 30.4

Plate reference :
Origin : SDSS

Color coding :
i band ●
r band ●
g band ●

Error circle :
 R_{90} (") : 1.6

XMM SSC
Apr 26 20:44:34 2019