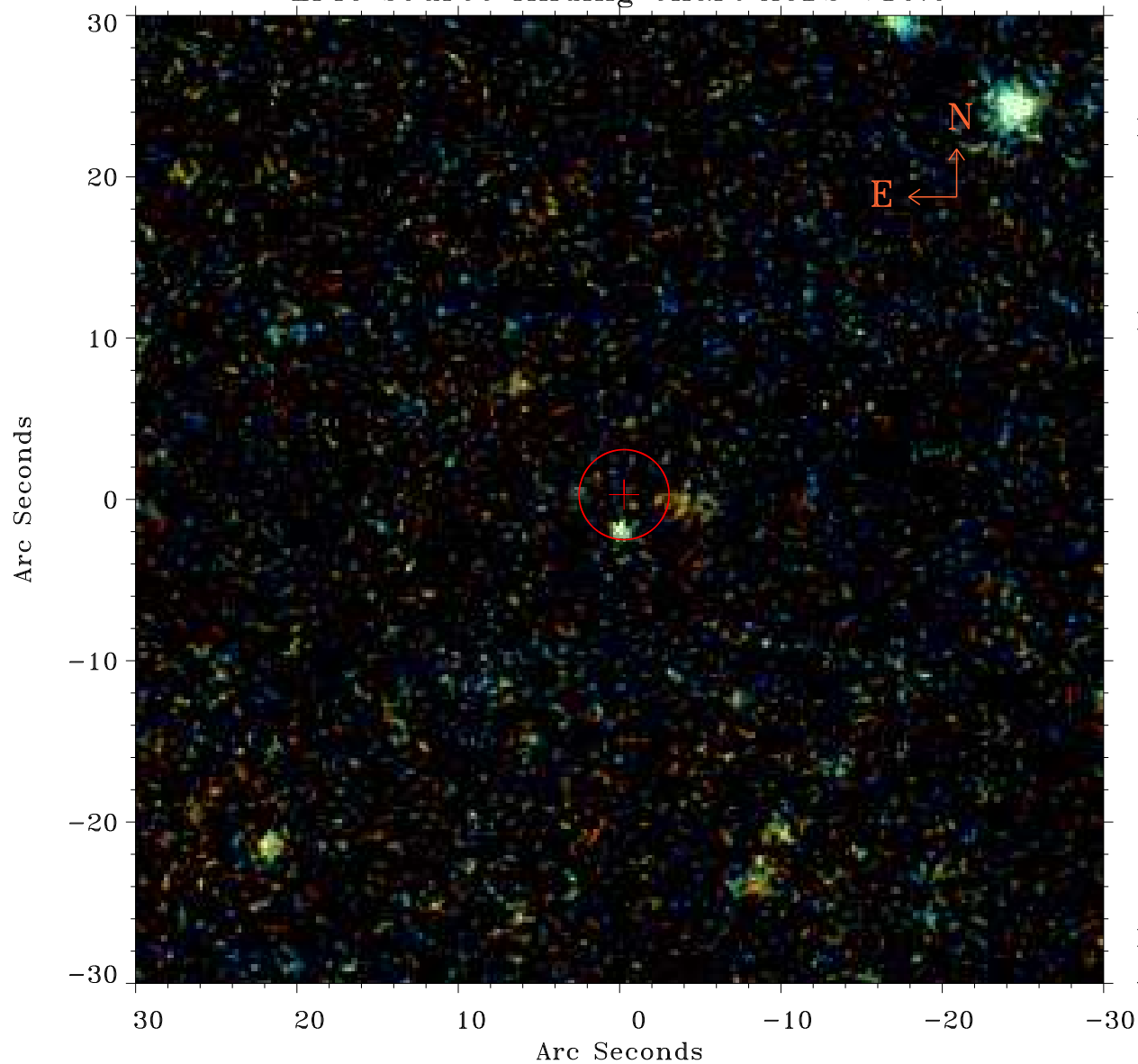


# EPIC source finding chart ACDS V10.0



Principal Investigator :

Dr PASQUALE MAZZOTTA

XMM target name :

2PI0.095J1013.9-000

OBS ID : 201750401

Source number : 40

X-ray coordinates :

$\alpha$  : 10 13 59.37

$\delta$  : +00 01 23.0

Center coordinates :

$\alpha$  : 10 13 59.38

$\delta$  : +00 01 22.9

Plate reference :

Origin : PanSTARRS-DR1

Color coding :

z band ●

(z+g)/2 ●

g band ●

Error:

R90 : 2.8 arsec

XMM SSC

Apr 26 20:55:51 2019