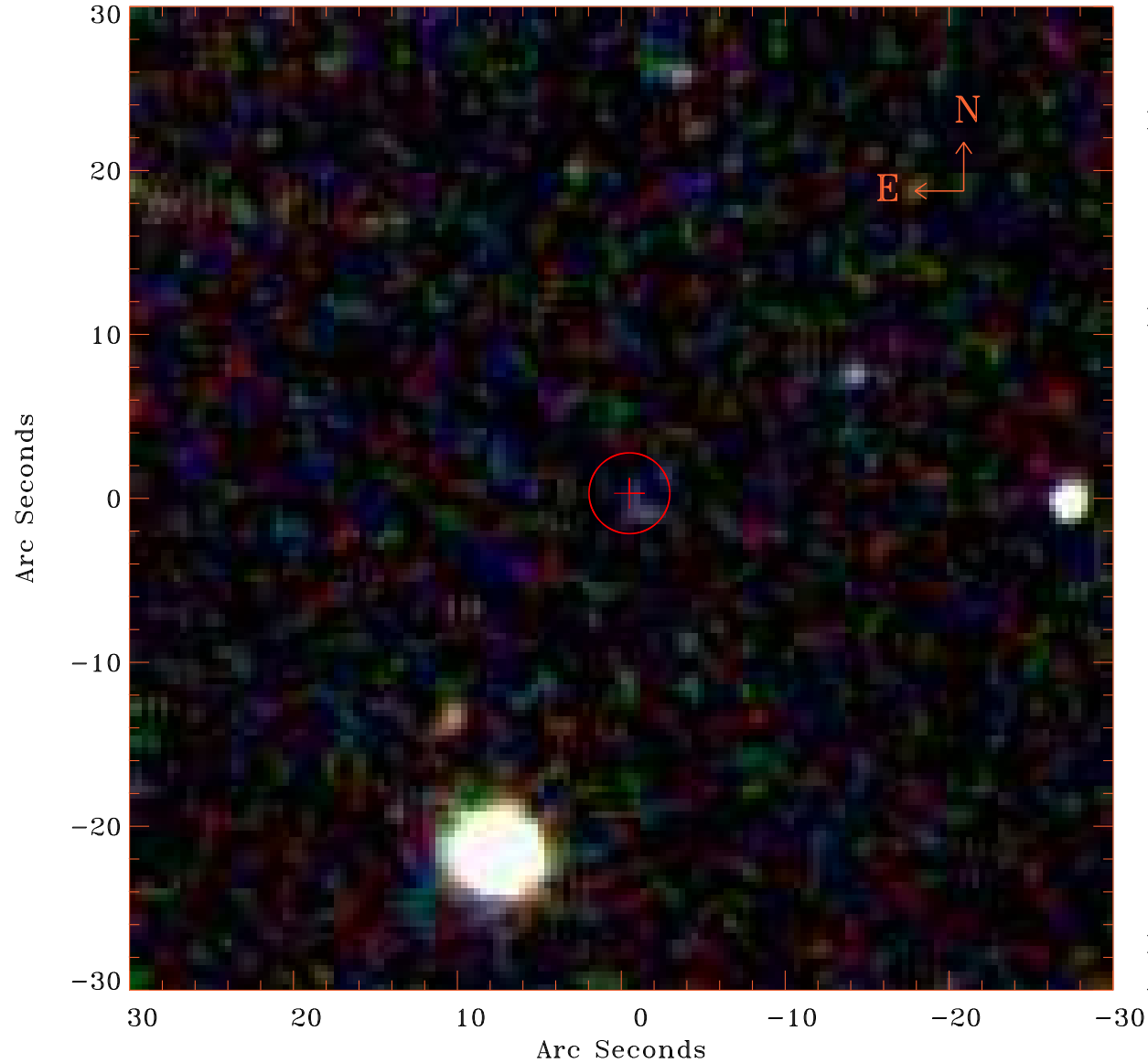


# EPIC source finding chart V10.0



Principal Investigator :

Dr PASQUALE MAZZOTTA

XMM target name :

2PI0.095J1013.9-000

OBS ID : 201750401

Source number : 42

X-ray coordinates :

$\alpha$  : 10 14 10.58

$\delta$  : -00 17 08.5

Center coordinates :

$\alpha$  : 10 14 10.59

$\delta$  : -00 17 08.5

Plate reference :

Origin : SDSS

Color coding :

i band ●

r band ●

g band ●

Error circle :

$R_{90}$  (") : 2.4

XMM SSC

Apr 26 20:45:05 2019