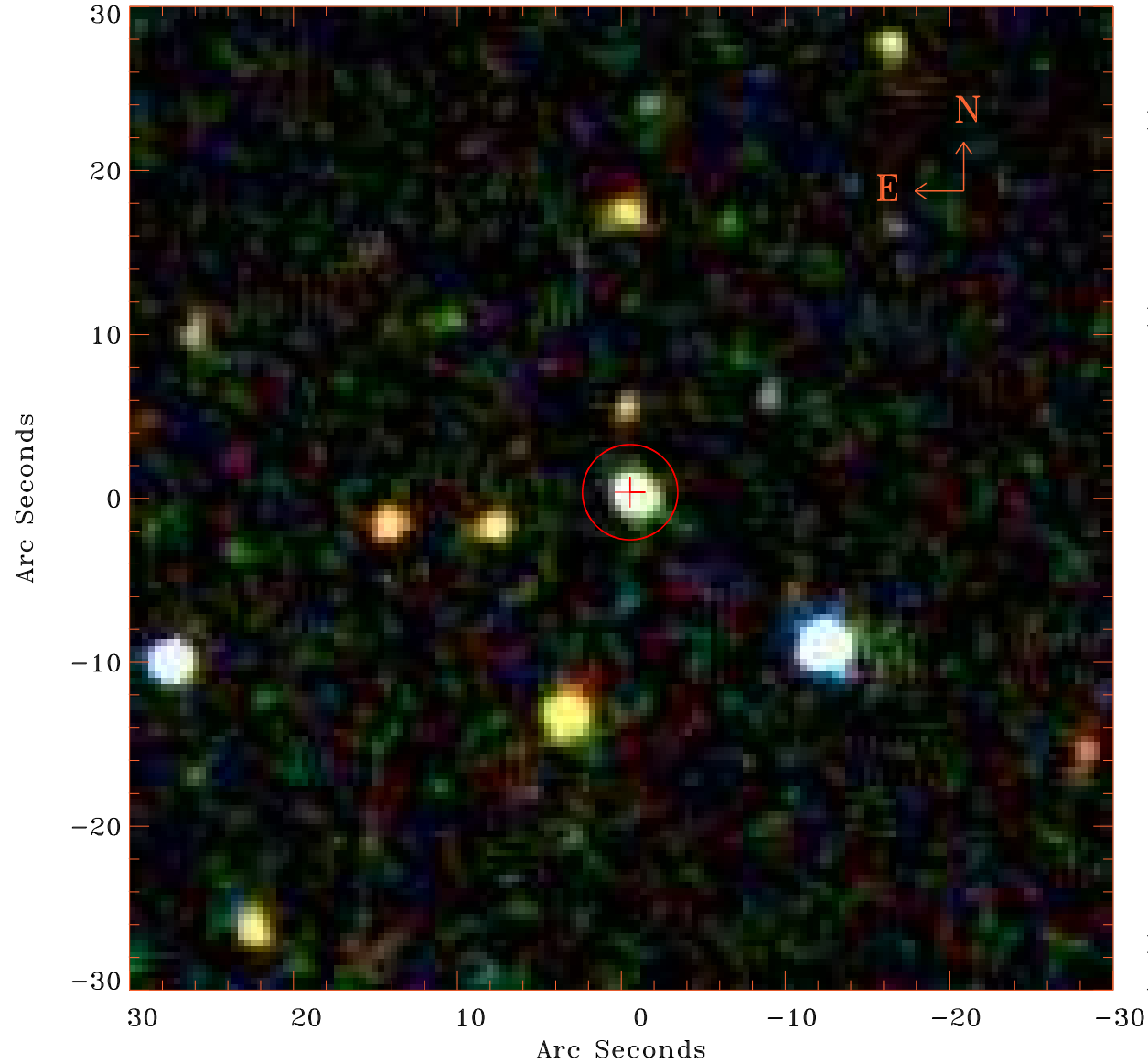


# EPIC source finding chart V10.0



Principal Investigator :  
Dr PASQUALE MAZZOTTA

XMM target name :  
2PI0.095J1013.9-000

OBS ID : 201750401  
Source number : 43

X-ray coordinates :  
 $\alpha$  : 10 14 13.11  
 $\delta$  : -00 08 25.2

Center coordinates :  
 $\alpha$  : 10 14 13.12  
 $\delta$  : -00 08 25.2

Plate reference :  
Origin : SDSS

Color coding :  
i band ●  
r band ●  
g band ●

Error circle :  
 $R_{90}$  (") : 2.9

XMM SSC  
Apr 26 20:45:14 2019