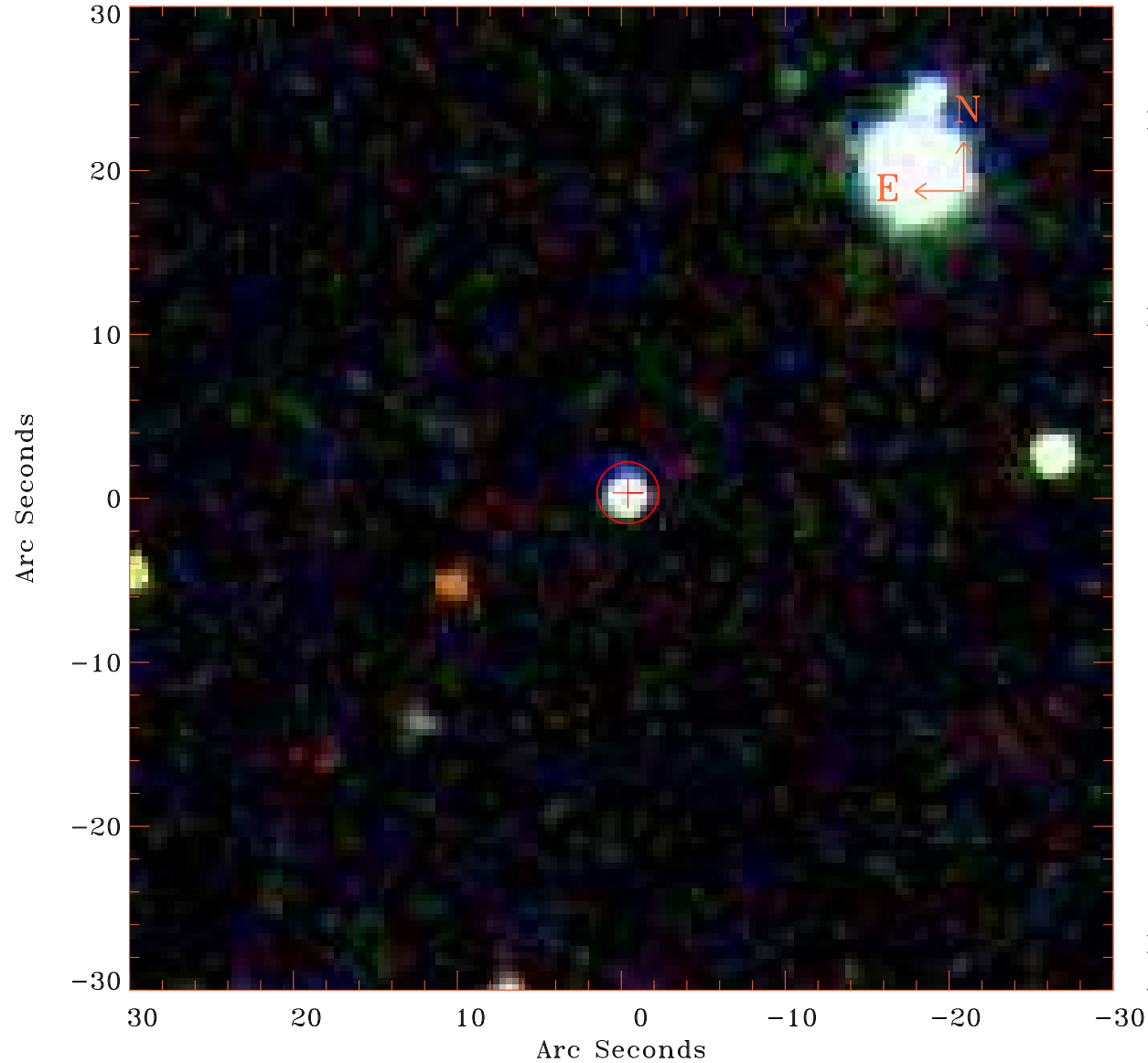


# EPIC source finding chart V10.0



Principal Investigator :

Dr JULIEN MALZAC

XMM target name :

NGC 5506

OBS ID : 201830201

Source number : 13

X-ray coordinates :

$\alpha$  : 14 13 02.27

$\delta$  : -03 04 36.9

Center coordinates :

$\alpha$  : 14 13 02.27

$\delta$  : -03 04 36.8

Plate reference :

Origin : SDSS

Color coding :

i band ●

r band ●

g band ●

Error circle :

$R_{90}$  (") : 1.9

XMM SSC

Apr 18 13:09:56 2019