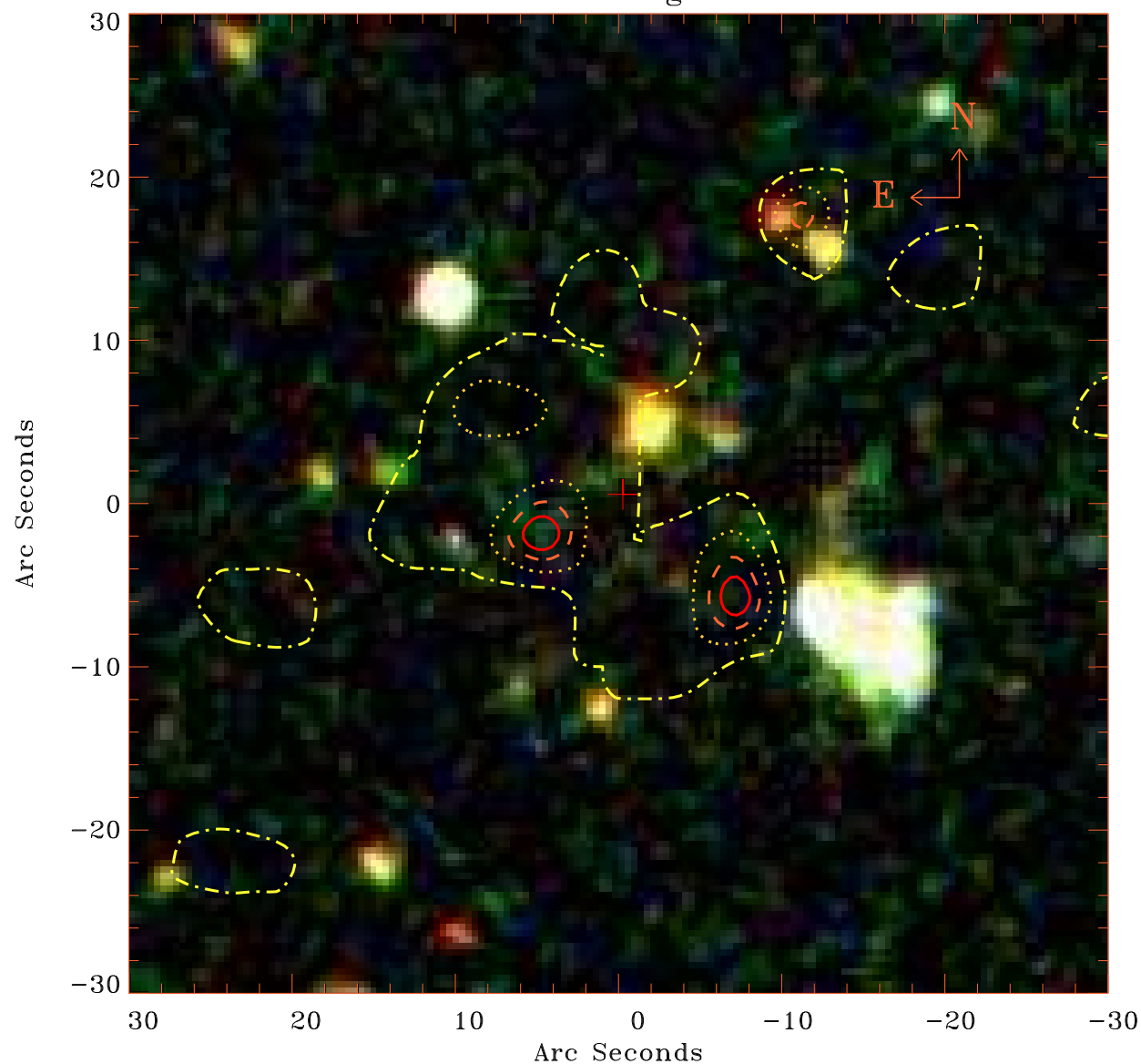


# EPIC source finding chart V10.0



Principal Investigator :

Dr JULIEN MALZAC

XMM target name :

NGC 5506

OBS ID : 201830201

Source number : 20

X-ray coordinates :

$\alpha$  : 14 12 56.39

$\delta$  : -03 24 13.7

Center coordinates :

$\alpha$  : 14 12 56.38

$\delta$  : -03 24 13.8

Plate reference :

Origin : SDSS

Color coding :

i band ●

r band ●

g band ●

Contour levels (counts) :



XMM SSC

Apr 18 13:09:55 2019