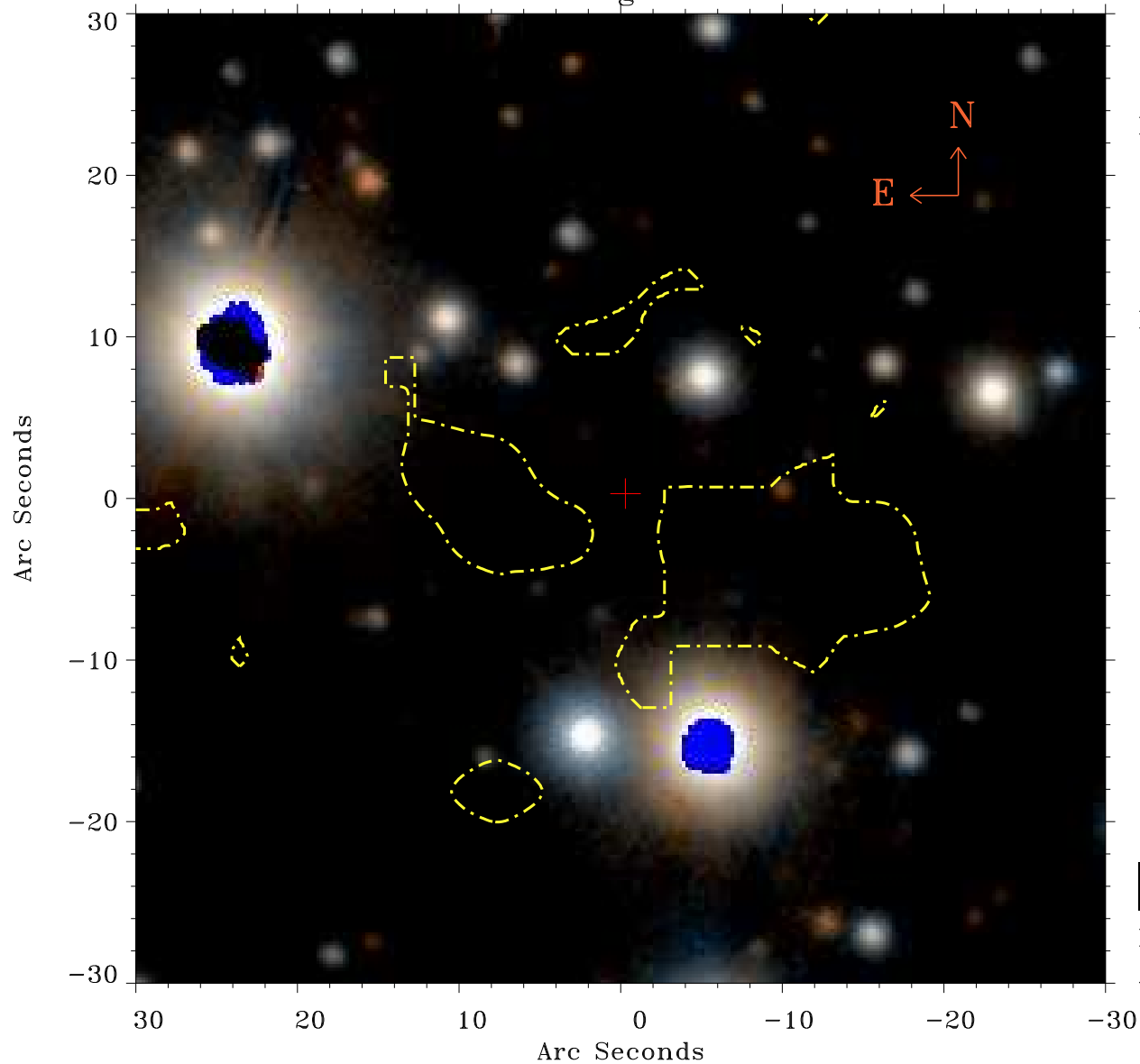


EPIC source finding chart ACDS V10.0



Principal Investigator :

Dr FABIO FAVATA

XMM target name :

61 CYG A/B

OBS ID : 202610401

Source number : 10

X-ray coordinates :

α : 21 06 39.28

δ : +38 43 16.4

Center coordinates :

α : 21 06 39.29

δ : +38 43 16.3

Plate reference :

Origin : PanSTARRS-DR1

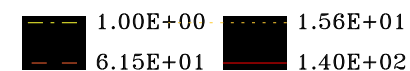
Color coding :

z band ●

(z+g)/2 ●

g band ●

Contour levels (counts) :



XMM SSC

Apr 23 06:37:56 2019