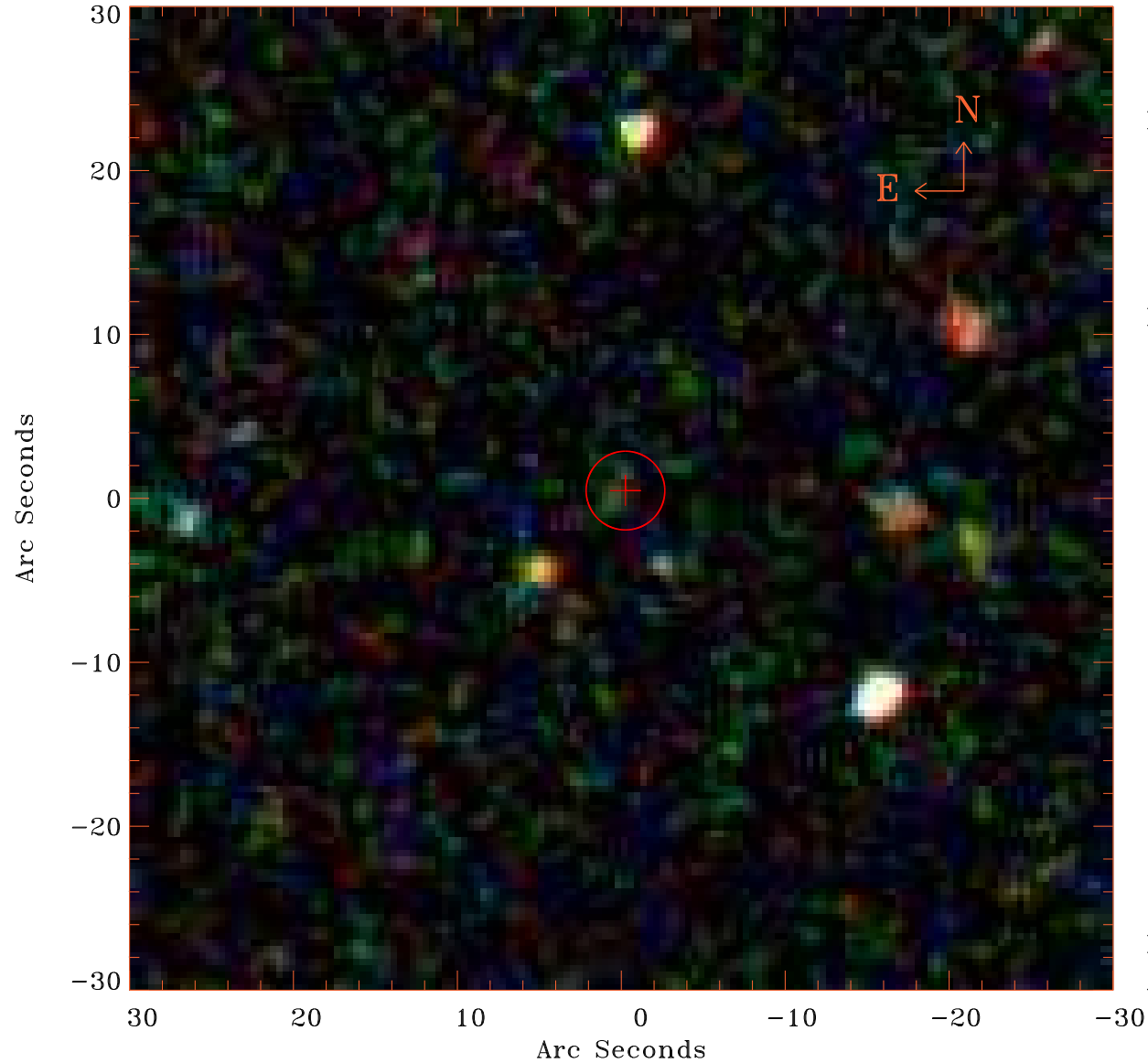


# EPIC source finding chart V10.0



Principal Investigator :

Prof PAULA SZKODY

XMM target name :

SDSSJ1446+02

OBS ID : 203050801

Source number : 30

X-ray coordinates :

$\alpha$  : 14 46 32.41

$\delta$  : +02 51 00.5

Center coordinates :

$\alpha$  : 14 46 32.40

$\delta$  : +02 51 00.4

Plate reference :

Origin : SDSS

Color coding :

i band ●

r band ●

g band ●

Error circle :

$R_{90}$  (") : 2.4

XMM SSC

Apr 27 08:56:21 2019