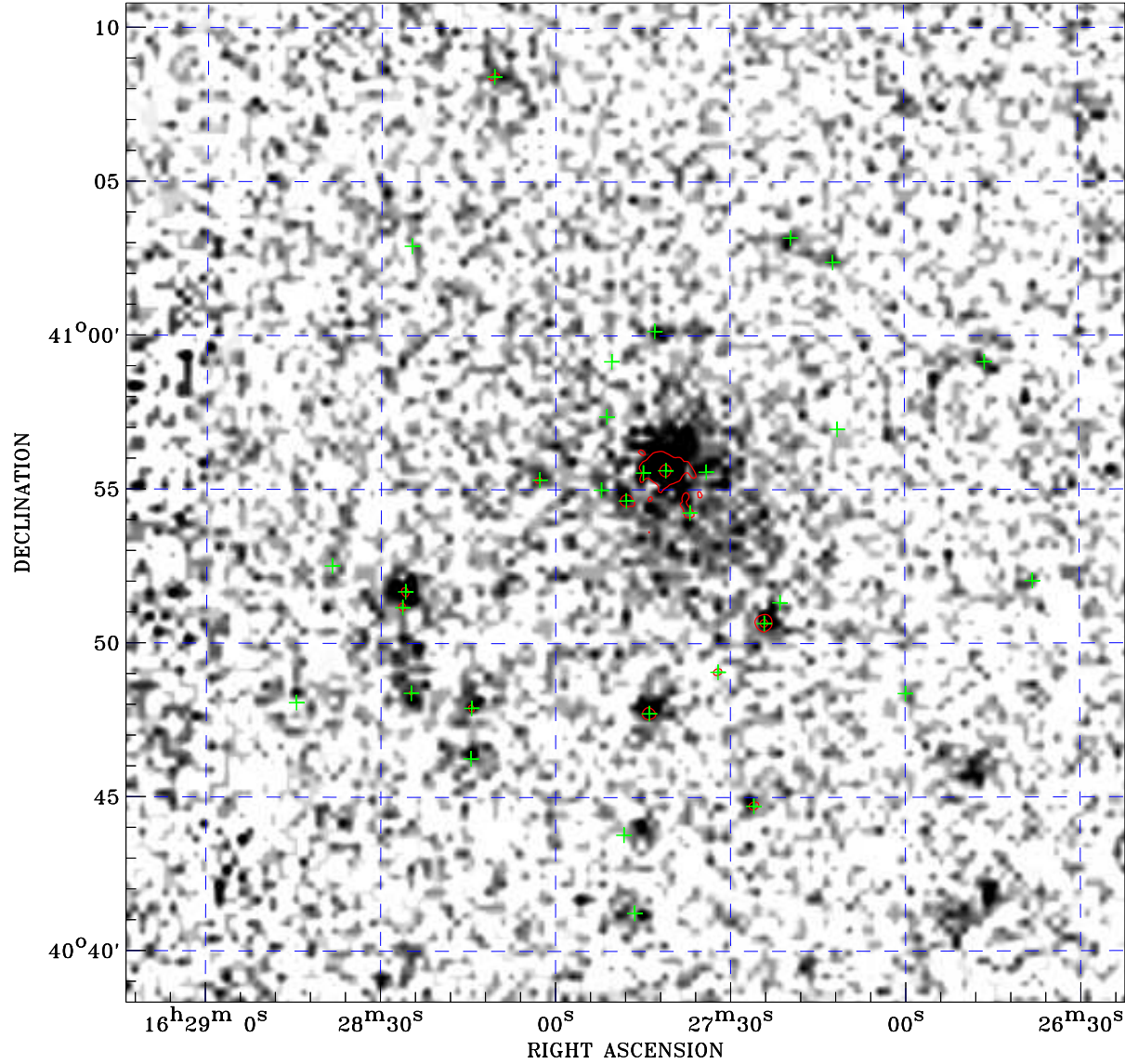


PDF XMM ROSAT image ACDS V10.0



Principal Investigator :
Dr CHRISTINE JONES

XMM target name :
A2197W

Observation ID :
0203710101

Epic image :
 α : 16 27 48.03
 δ : +40 54 35.3
Energy band : 0.2–12.0 keV
MOS1 : 11359 s
MOS2 : 10631 s
PN : 12289 s

Contour levels (counts) :
 2σ :1.706E+01 7σ :3.934E+01
 30σ :1.418E+02

Nearest ROSAT image
from Epic image center :
Observation : 800363p
Instrument : PSPCB
 α : 16 27 32.69
 δ : +40 52 47.7

Other ROSAT images :
None

XMM SSC
Apr 25 18:48:15 2019

ROSAT image gray scale (Log) :
1.123E-04 5.582E-04
(counts s⁻¹)

⊙ Epic image contour
levels at 2, 7 and 30 σ

+ Detected Epic sources