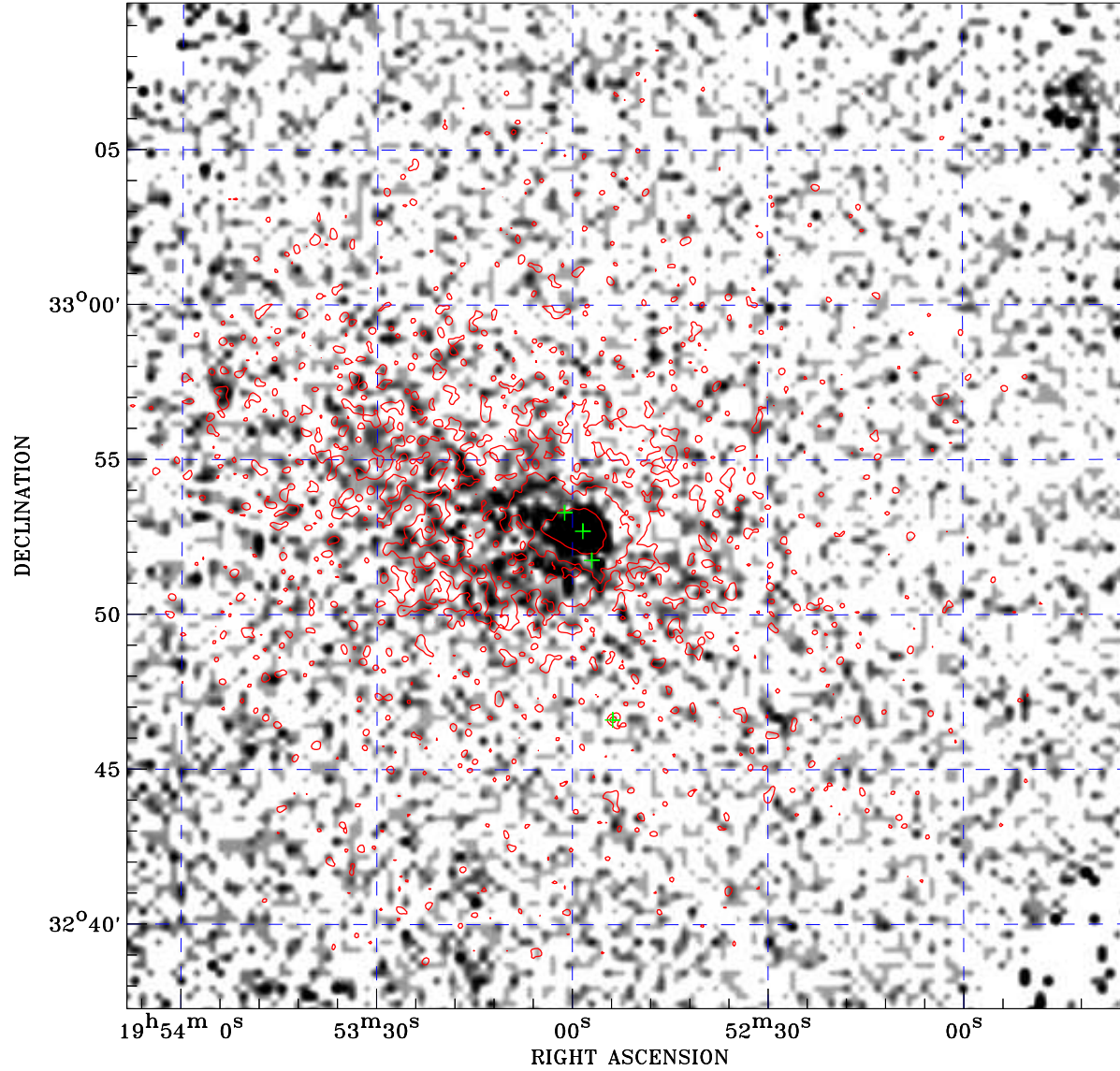


PDF XMM ROSAT image ACDS V10.0



ROSAT image gray scale (Log) :
[Bar]
< 9.511E-05 > 6.306E-04
(counts s⁻¹)

⊙ Epic image contour
levels at 2, 7 and 30 σ

+ Detected Epic sources

Principal Investigator :
Dr SILVIA ZANE

XMM target name :
PSR B1951+32

Observation ID :
0204070101

Epic image :
 α : 19 52 51.18
 δ : +32 53 31.4
Energy band : 0.2–12.0 keV
MOS1 : 3824 s
MOS2 : 4009 s
PN : 3321 s

Contour levels (counts) :
2 σ :2.805E-01 7 σ :7.790E-01
30 σ 3.072E+00

Nearest ROSAT image
from Epic image center :
Observation : 400048p-0
Instrument : PSPCB
 α : 19 53 11.90
 δ : +32 49 47.7

Other ROSAT images :
None

XMM SSC
May 3 21:25:49 2019