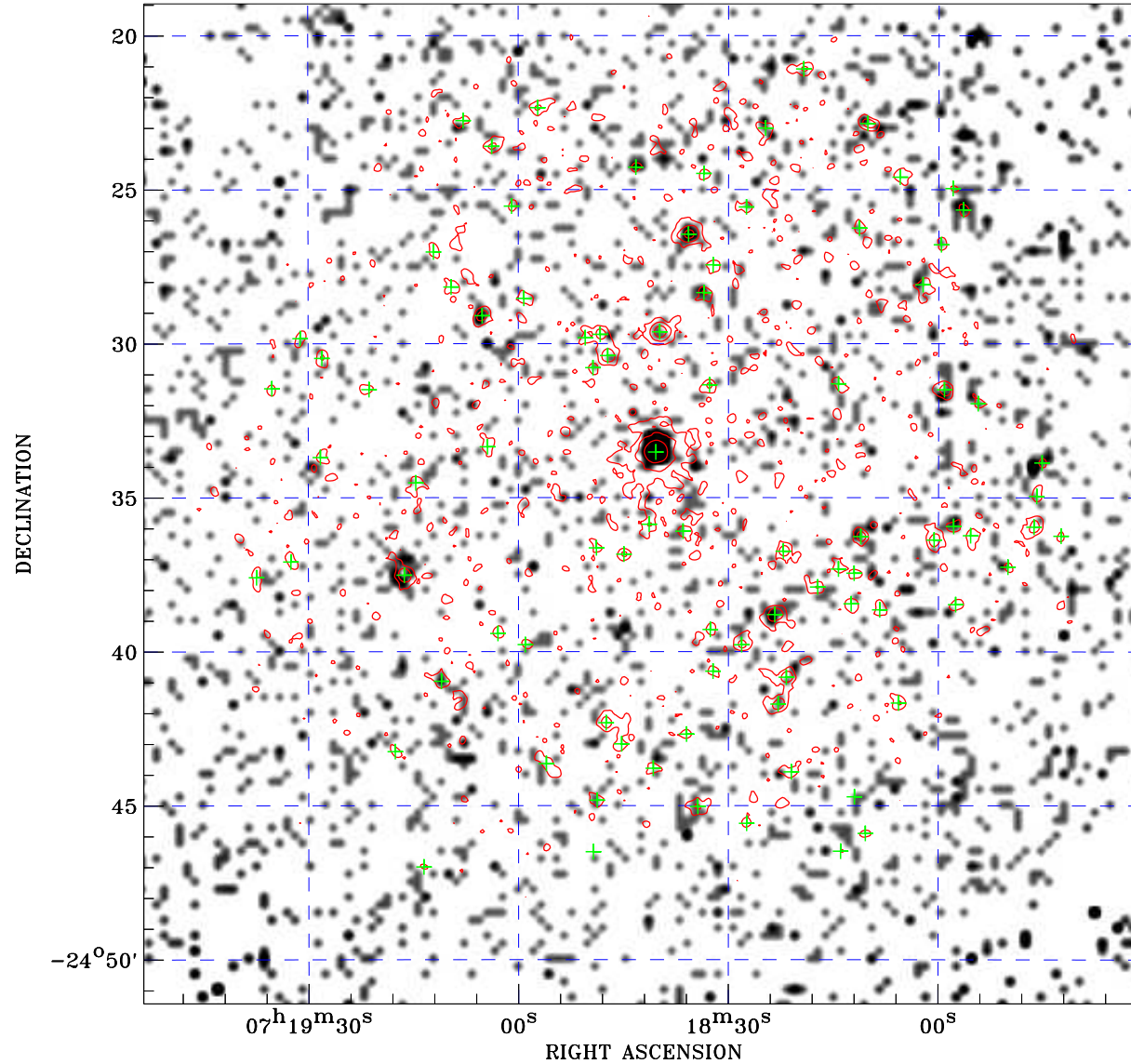



PDF XMM ROSAT image ACDS V10.0



ROSAT image gray scale (Log) :

 $\langle 7.291\text{E}-05$ $\rangle 5.838\text{E}-04$
 (counts s⁻¹)

⊙ Epic image contour
 levels at 2, 7 and 30 σ

+ Detected Epic sources

Principal Investigator :
 Dr JULIAN PITTARD

XMM target name :
 HD 57060

Observation ID :
 0205650401

Epic image :
 α : 07 18 42.09
 δ : -24 35 12.3
 Energy band : 0.2–12.0 keV
 MOS1 : 23799 s
 MOS2 : 23820 s
 PN : 12316 s

Contour levels (counts) :
 2 σ :1.094E+00 7 σ :2.487E+00
 30 σ :8.895E+00

Nearest ROSAT image
 from Epic image center :
 Observation : 200112p
 Instrument : PSPCB
 α : 07 18 54.02
 δ : -24 36 36.2

Other ROSAT images :
 None

XMM SSC
 Apr 22 04:35:36 2019