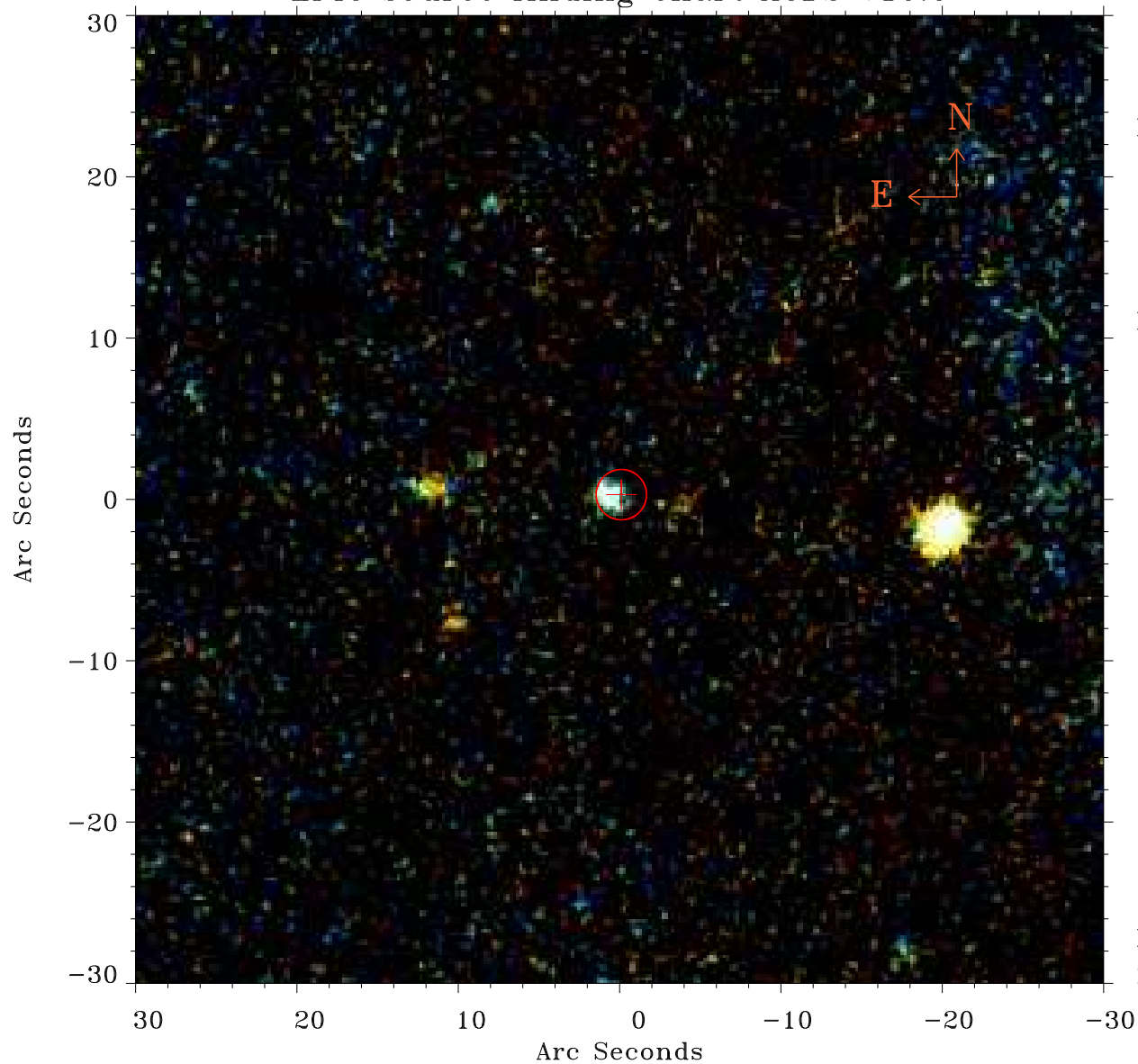


# EPIC source finding chart ACDS V10.0



Principal Investigator :

Mr ALEXANDER BLUSTIN

XMM target name :

NGC7469

OBS ID : 207090101

Source number : 20

X-ray coordinates :

$\alpha$  : 23 03 13.78

$\delta$  : +08 59 28.6

Center coordinates :

$\alpha$  : 23 03 13.77

$\delta$  : +08 59 28.5

Plate reference :

Origin : PanSTARRS-DR1

Color coding :

z band ●

(z+g)/2 ●

g band ●

Error:

R90 : 1.6 arsec

XMM SSC

May 3 23:59:56 2019