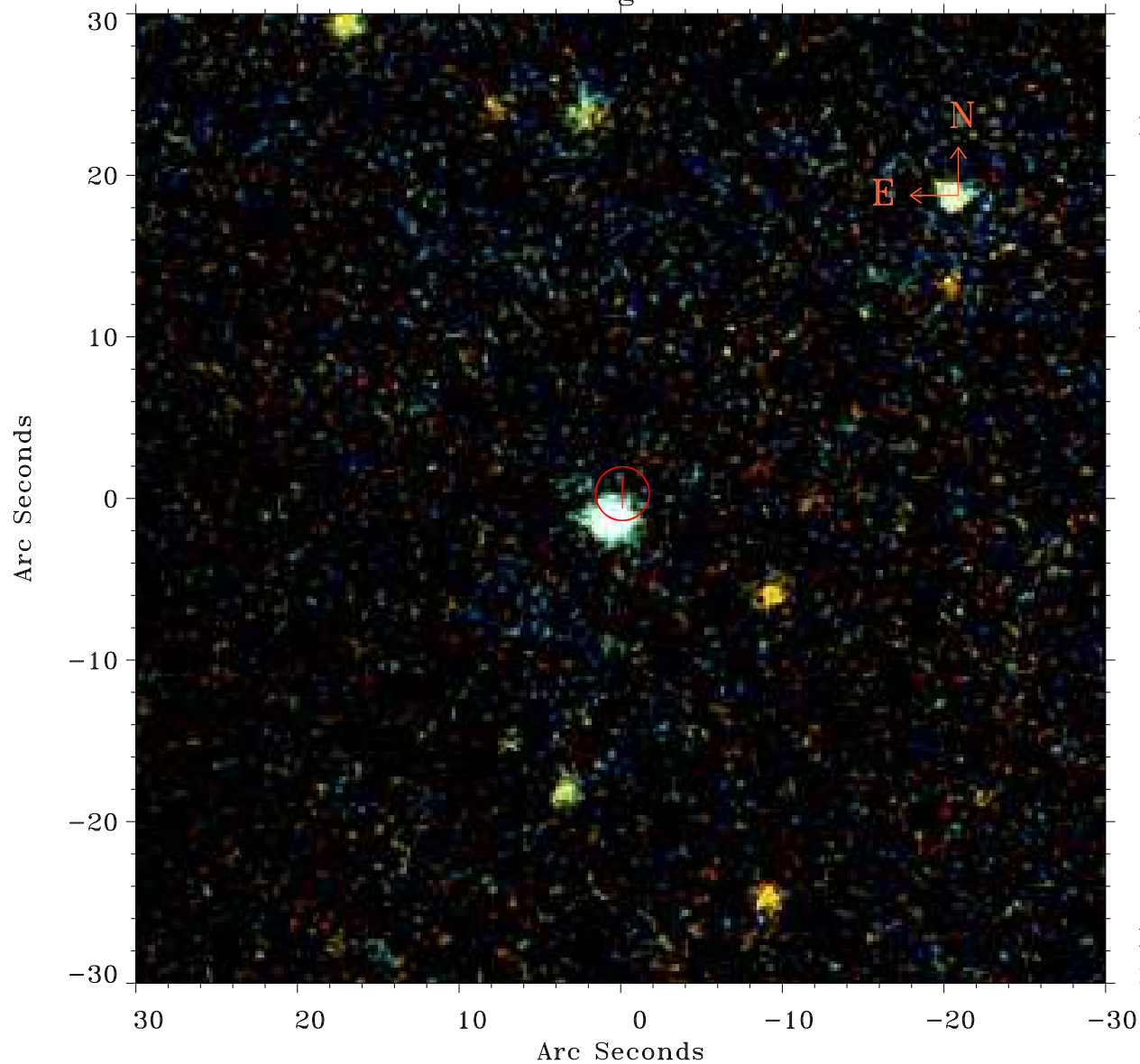


# EPIC source finding chart ACDS V10.0



Principal Investigator :

Mr ALEXANDER BLUSTIN

XMM target name :

NGC7469

OBS ID : 207090101

Source number : 31

X-ray coordinates :

$\alpha$  : 23 03 51.30

$\delta$  : +08 55 12.0

Center coordinates :

$\alpha$  : 23 03 51.29

$\delta$  : +08 55 11.9

Plate reference :

Origin : PanSTARRS-DR1

Color coding :

z band ●

(z+g)/2 ●

g band ●

Error:

R90 : 1.7 arcsec

XMM SSC

May 4 00:01:57 2019