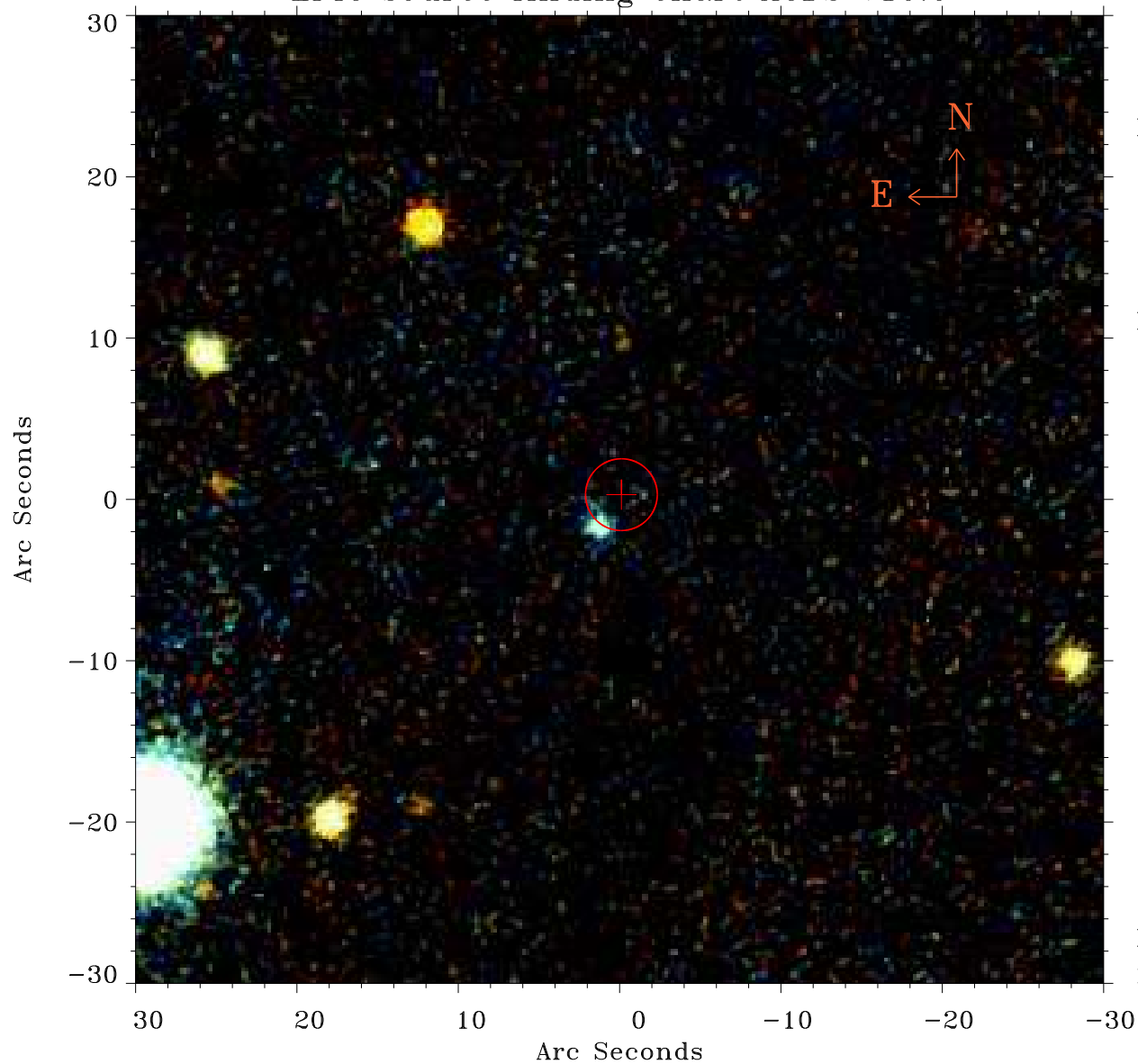


# EPIC source finding chart ACDS V10.0



Principal Investigator :

Mr ALEXANDER BLUSTIN

XMM target name :

NGC7469

OBS ID : 207090101

Source number : 50

X-ray coordinates :

$\alpha$  : 23 02 43.84

$\delta$  : +08 59 39.0

Center coordinates :

$\alpha$  : 23 02 43.83

$\delta$  : +08 59 38.9

Plate reference :

Origin : PanSTARRS-DR1

Color coding :

z band ●

(z+g)/2 ●

g band ●

Error:

R90 : 2.2 arsec

XMM SSC

May 3 23:58:03 2019