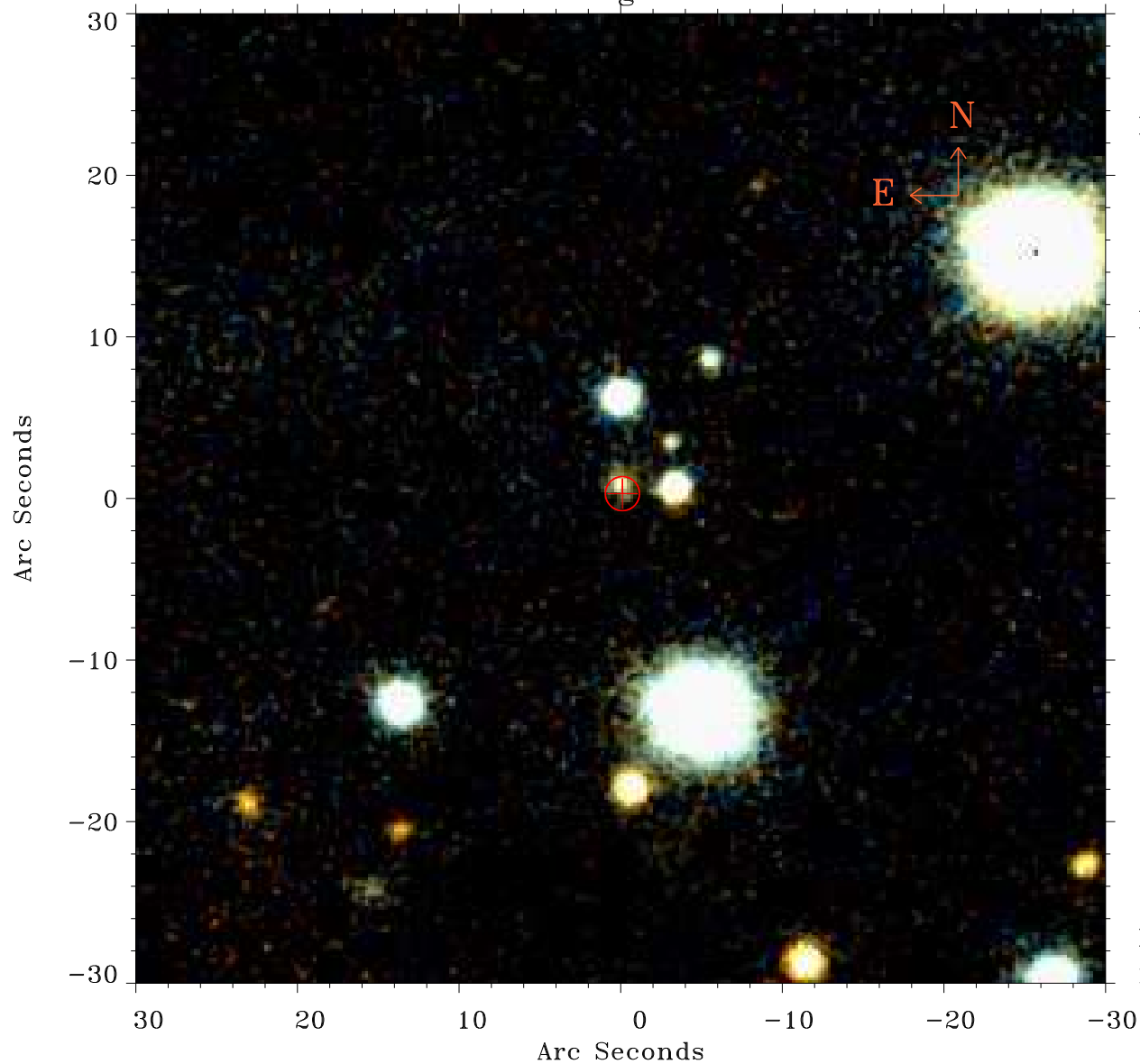


# EPIC source finding chart ACDS V10.0



Principal Investigator :

Dr Manuel Guedel

XMM target name :

T Tau

OBS ID : 301500101

Source number : 8

X-ray coordinates :

$\alpha$  : 04 22 32.92

$\delta$  : +19 37 31.2

Center coordinates :

$\alpha$  : 04 22 32.91

$\delta$  : +19 37 31.1

Plate reference :

Origin : PanSTARRS-DR1

Color coding :

z band ●

(z+g)/2 ●

g band ●

Error:

R90 : 1.0 arsec

XMM SSC

May 9 20:24:34 2019