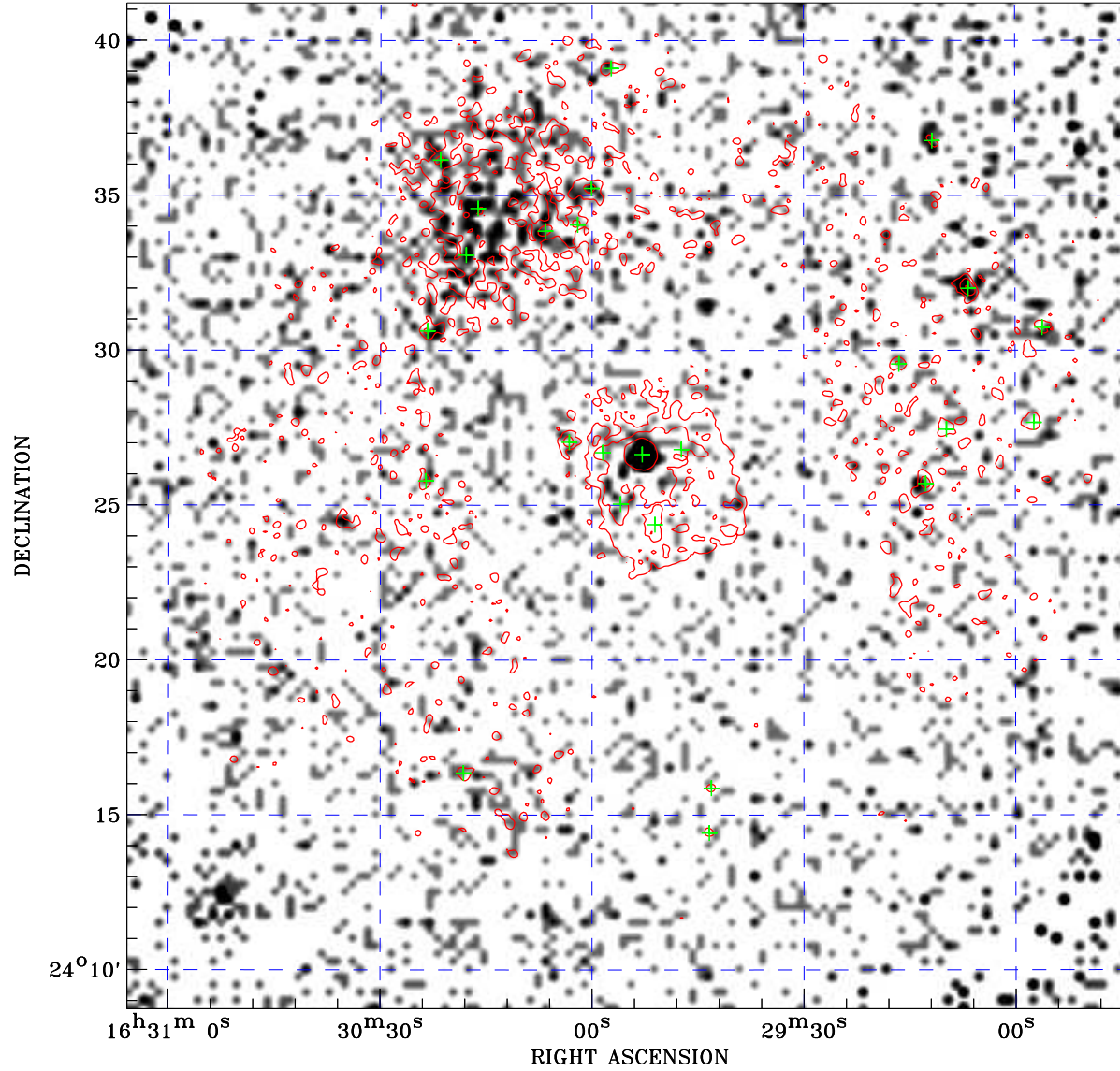



PDF XMM ROSAT image ACDS V10.0



ROSAT image gray scale (Log) :

 $\langle 8.623\text{E}-05$ $\rangle 6.584\text{E}-04$
(counts s^{-1})

⊙ Epic image contour
levels at 2, 7 and 30 σ

+ Detected Epic sources

Principal Investigator :
Prof D. Michael Crenshaw

XMM target name :
MRK883

Observation ID :
0302260101

Epic image :
 α : 16 29 54.64
 δ : +24 24 59.1
Energy band : 0.2–12.0 keV
MOS1 : 11343 s
MOS2 : 11478 s
PN : 11371 s

Contour levels (counts) :
2 σ :6.208E-01 7 σ :1.593E+00
30 σ 6.067E+00

Nearest ROSAT image
from Epic image center :
Observation : 700812p
Instrument : PSPCB
 α : 16 30 05.99
 δ : +24 23 23.7

Other ROSAT images :
None

XMM SSC
Apr 25 13:43:43 2019