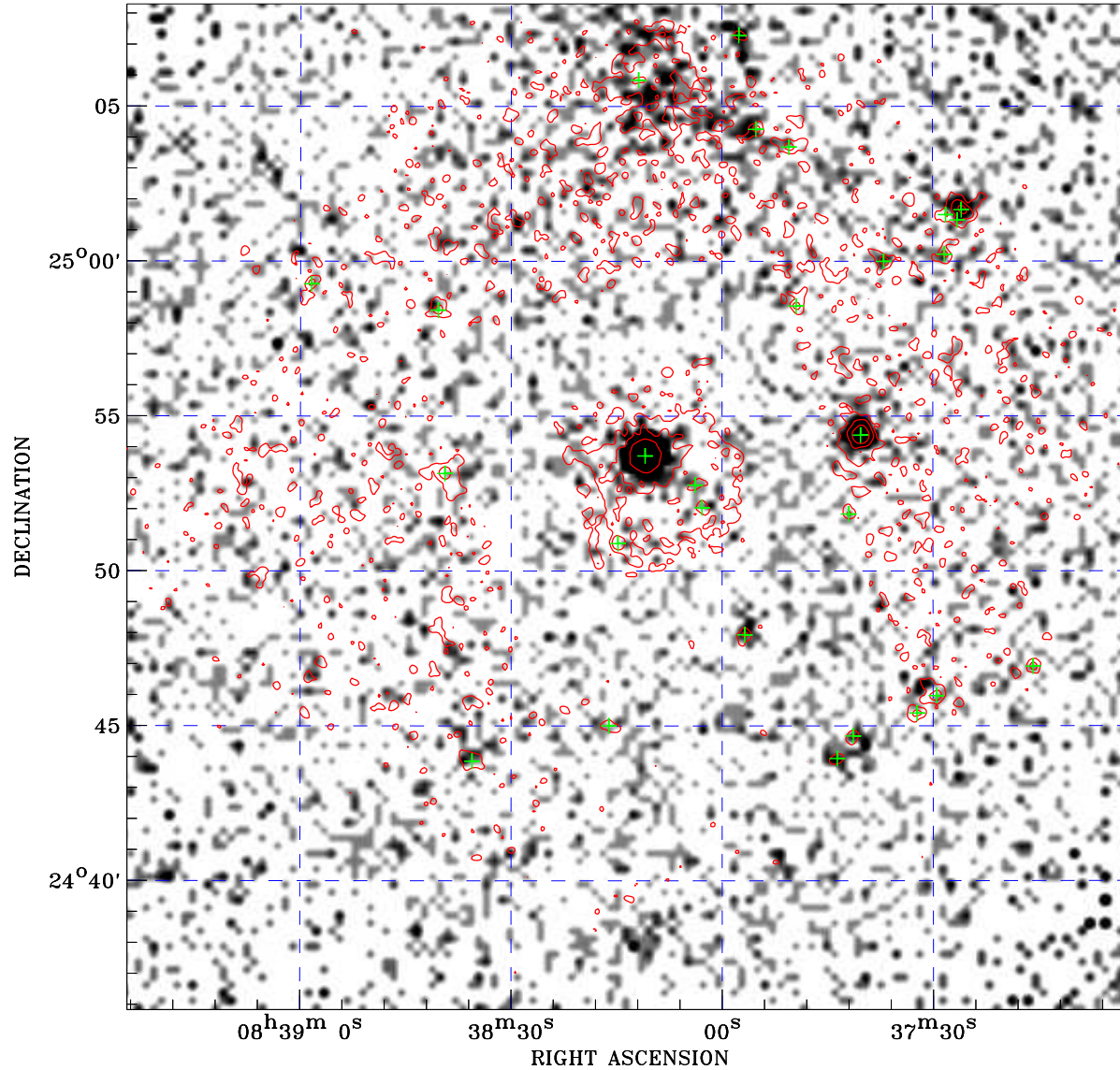



# PDF XMM ROSAT image ACDS V10.0



ROSAT image gray scale (Log) :  
  
 < 1.229E-04 > 9.027E-04  
 (counts s<sup>-1</sup>)

⊙ Epic image contour  
 levels at 2, 7 and 30 $\sigma$

+ Detected Epic sources

Principal Investigator :  
 Prof D. Michael Crenshaw

XMM target name :  
 NGC2622

Observation ID :  
 0302260201

Epic image :  
 $\alpha$  : 08 38 13.11  
 $\delta$  : +24 52 04.7  
 Energy band : 0.2–12.0 keV  
 MOS1 : 9183 s  
 MOS2 : 8625 s  
 PN : 7701 s

Contour levels (counts) :  
 2 $\sigma$  :3.879E-01 7 $\sigma$  :1.022E+00  
 30 $\sigma$  :3.939E+00

Nearest ROSAT image  
 from Epic image center :  
 Observation : 700300p  
 Instrument : PSPCB  
 $\alpha$  : 08 38 25.24  
 $\delta$  : +24 50 59.7

Other ROSAT images :  
 None

XMM SSC  
 Apr 27 20:32:31 2019