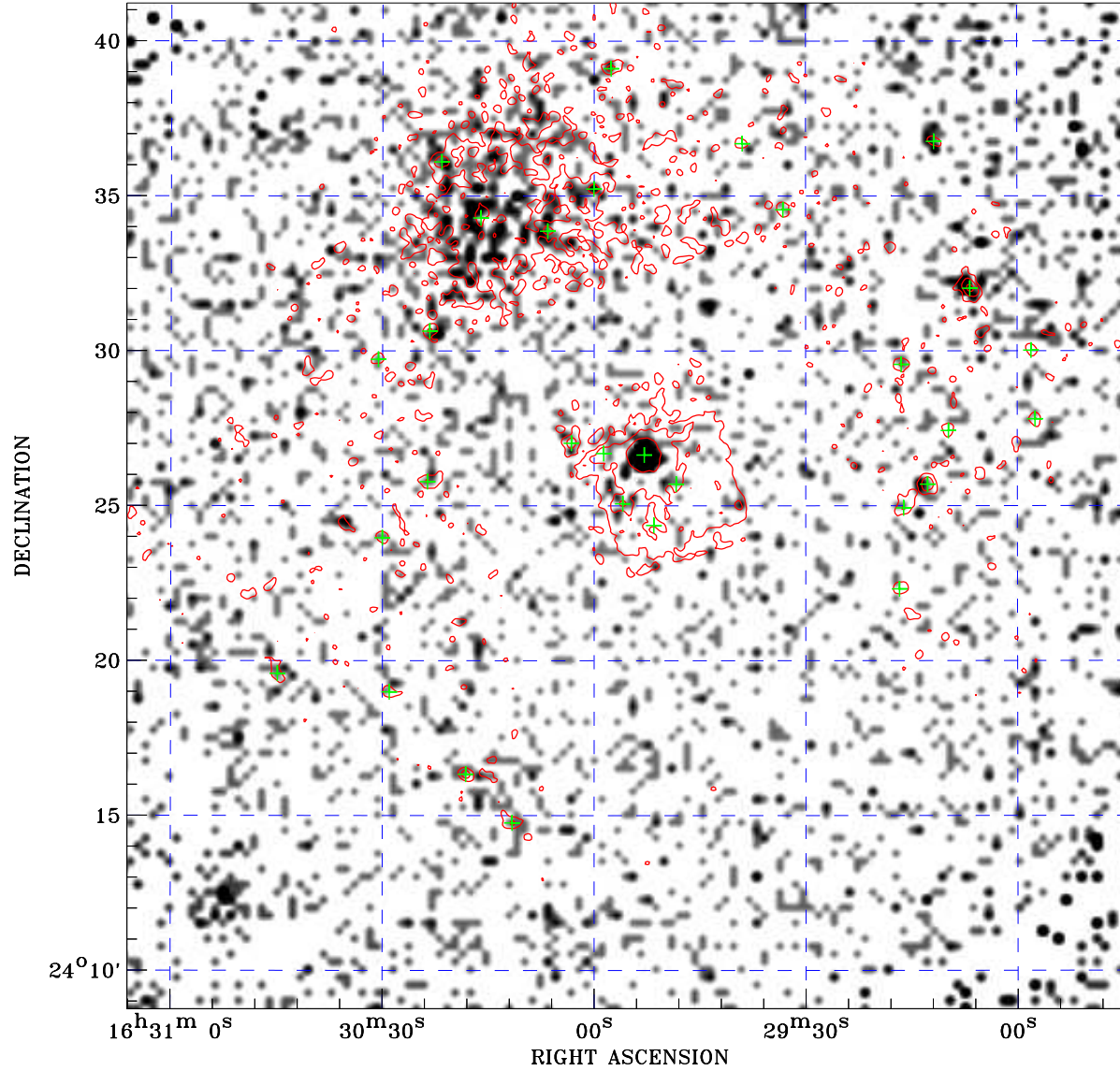



PDF XMM ROSAT image ACDS V10.0



ROSAT image gray scale (Log) :

 $\langle 8.651\text{E-}05$ $\rangle 6.591\text{E-}04$
(counts s^{-1})

⊙ Epic image contour
levels at 2, 7 and 30σ

+ Detected Epic sources

Principal Investigator :
Prof D. Michael Crenshaw

XMM target name :
MRK883

Observation ID :
0302260701

Epic image :
 α : 16 29 54.93
 δ : +24 25 00.1
Energy band : 0.2–12.0 keV
MOS1 : 15123 s
MOS2 : 15103 s
PN : 14971 s

Contour levels (counts) :
 2σ : $7.004\text{E-}01$ 7σ : $1.788\text{E+}00$
 30σ : $6.790\text{E+}00$

Nearest ROSAT image
from Epic image center :
Observation : 700812p
Instrument : PSPCB
 α : 16 30 05.99
 δ : +24 23 23.7

Other ROSAT images :
None

XMM SSC
Apr 18 07:29:54 2019