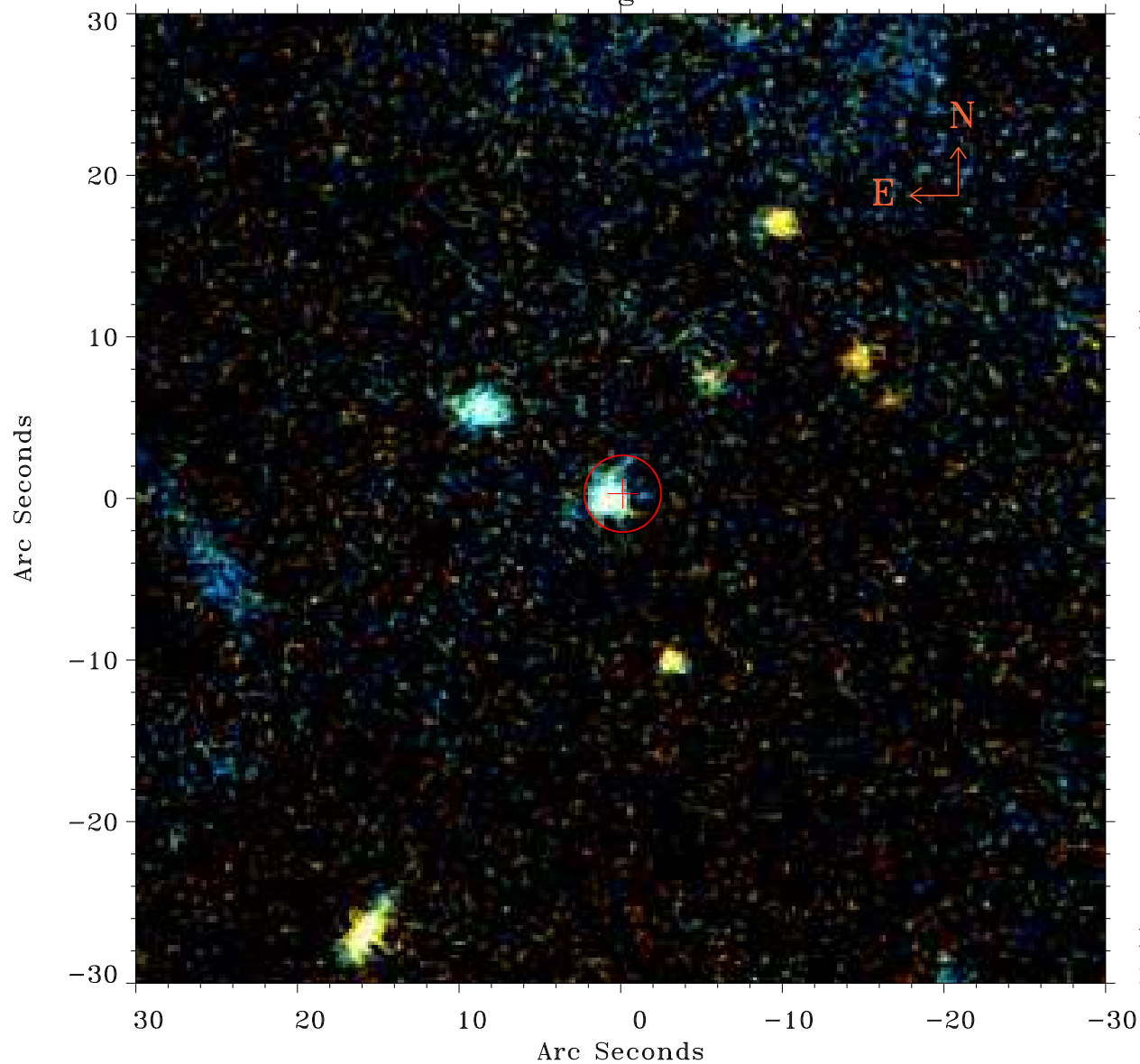


# EPIC source finding chart ACDS V10.0



Principal Investigator :  
Prof Guenther Hasinger

XMM target name :  
Cosmos field B3

OBS ID : 302350301  
Source number : 4

X-ray coordinates :  
 $\alpha$  : 10 02 26.28  
 $\delta$  : +02 19 23.3

Center coordinates :  
 $\alpha$  : 10 02 26.27  
 $\delta$  : +02 19 23.2

Plate reference :  
Origin : PanSTARRS-DR1

Color coding :  
z band ●  
(z+g)/2 ●  
g band ●

Error:  
R90 : 2.4 arsec

XMM SSC  
May 3 16:21:21 2019