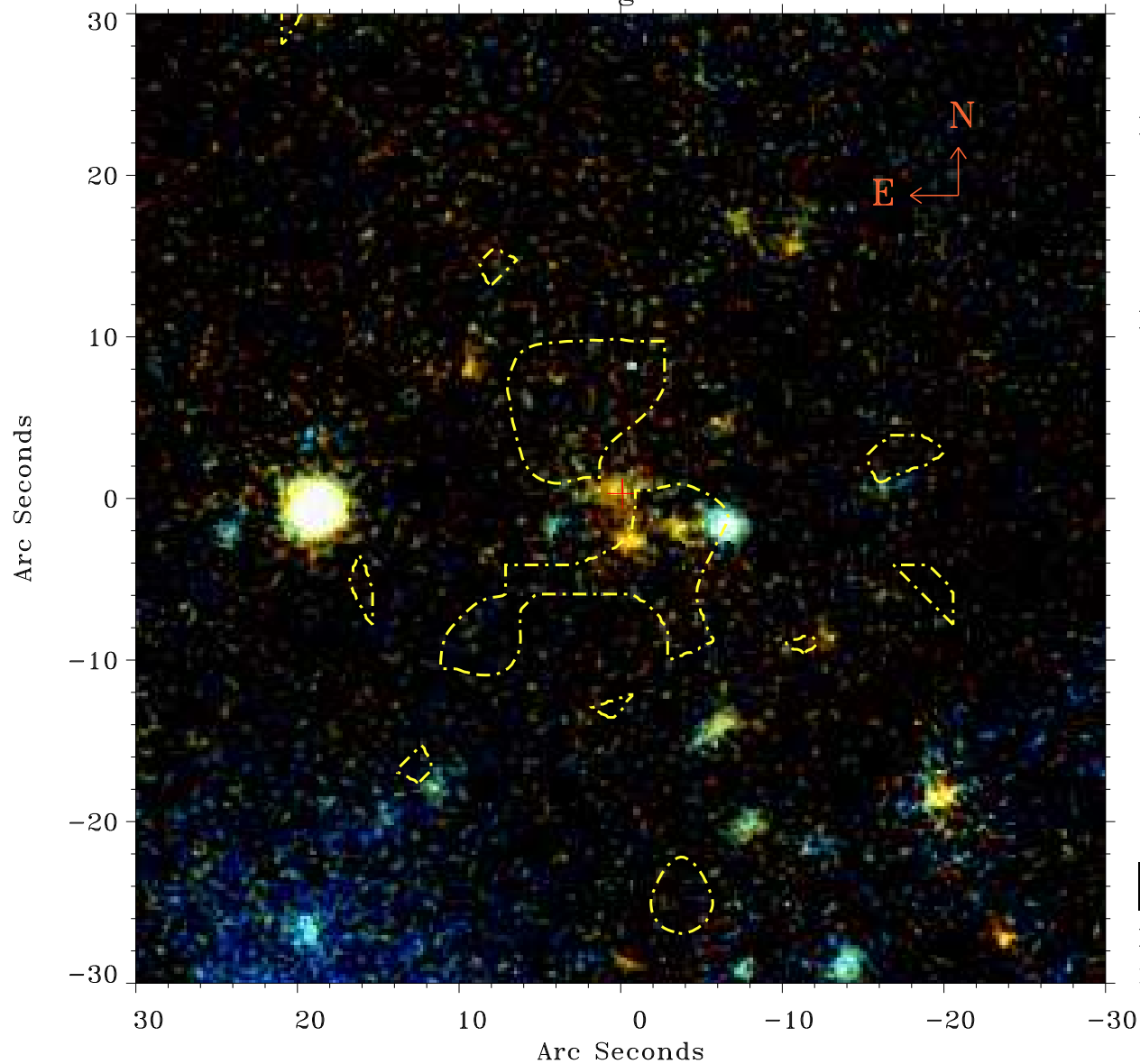


# EPIC source finding chart ACDS V10.0



Principal Investigator :  
Prof Guenther Hasinger

XMM target name :  
Cosmos field B3

OBS ID : 302350301  
Source number : 8

X-ray coordinates :  
 $\alpha$  : 10 02 01.18  
 $\delta$  : +02 13 30.1

Center coordinates :  
 $\alpha$  : 10 02 01.18  
 $\delta$  : +02 13 30.0

Plate reference :  
Origin : PanSTARRS-DR1

Color coding :  
z band ●  
(z+g)/2 ●  
g band ●

Contour levels (counts) :  
1.00E+00 1.57E+01  
6.25E+01 1.43E+02

XMM SSC  
May 3 16:20:42 2019