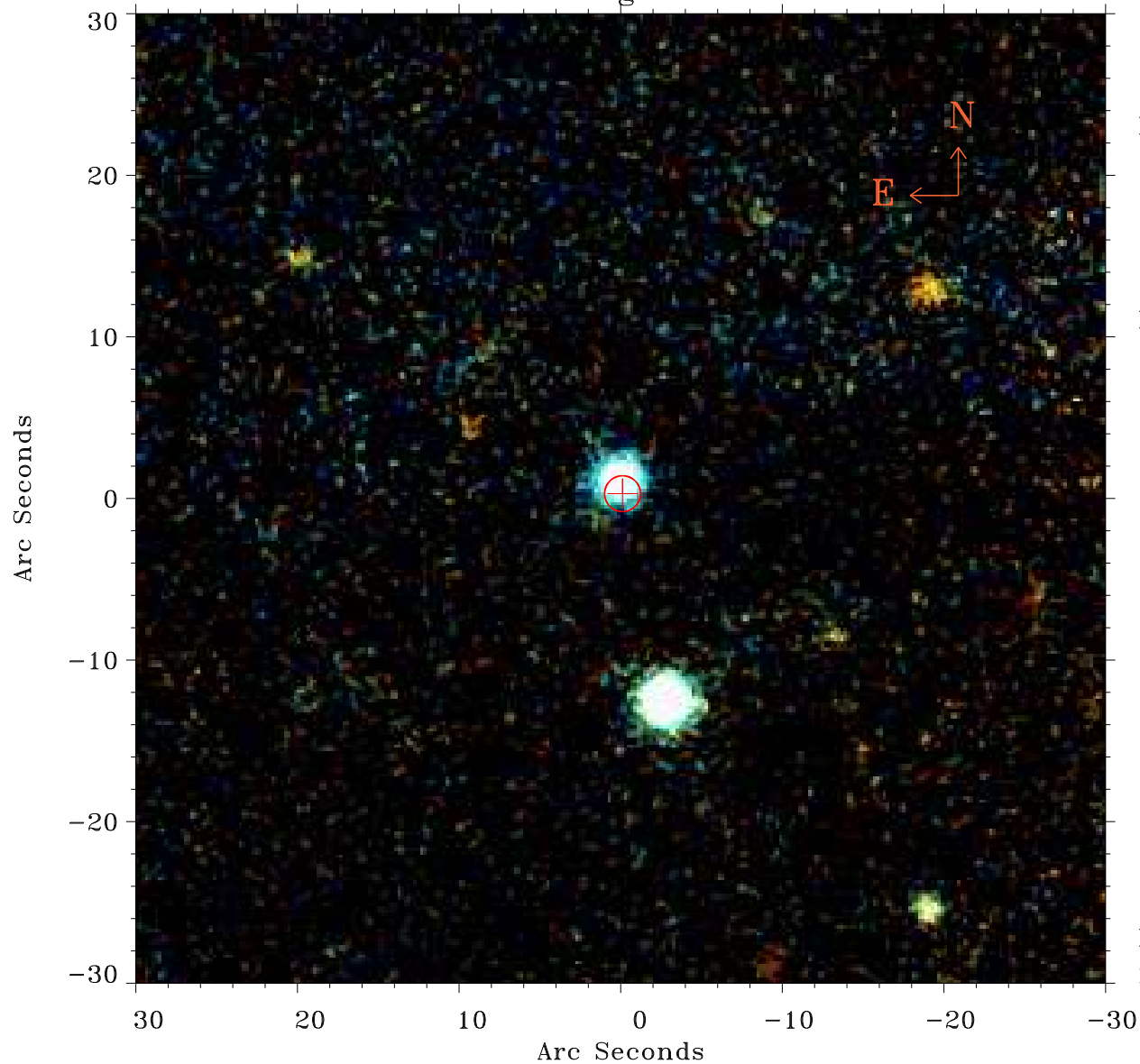


# EPIC source finding chart ACDS V10.0



Principal Investigator :  
Dr MICHAEL LOEWENSTEIN

XMM target name :  
NGC 5813

OBS ID : 302460101  
Source number : 4

X-ray coordinates :  
 $\alpha$  : 15 01 48.86  
 $\delta$  : +01 44 04.2

Center coordinates :  
 $\alpha$  : 15 01 48.85  
 $\delta$  : +01 44 04.1

Plate reference :  
Origin : PanSTARRS-DR1

Color coding :  
z band ●  
(z+g)/2 ●  
g band ●

Error:  
R90 : 1.1 arsec

XMM SSC  
May 1 19:51:40 2019