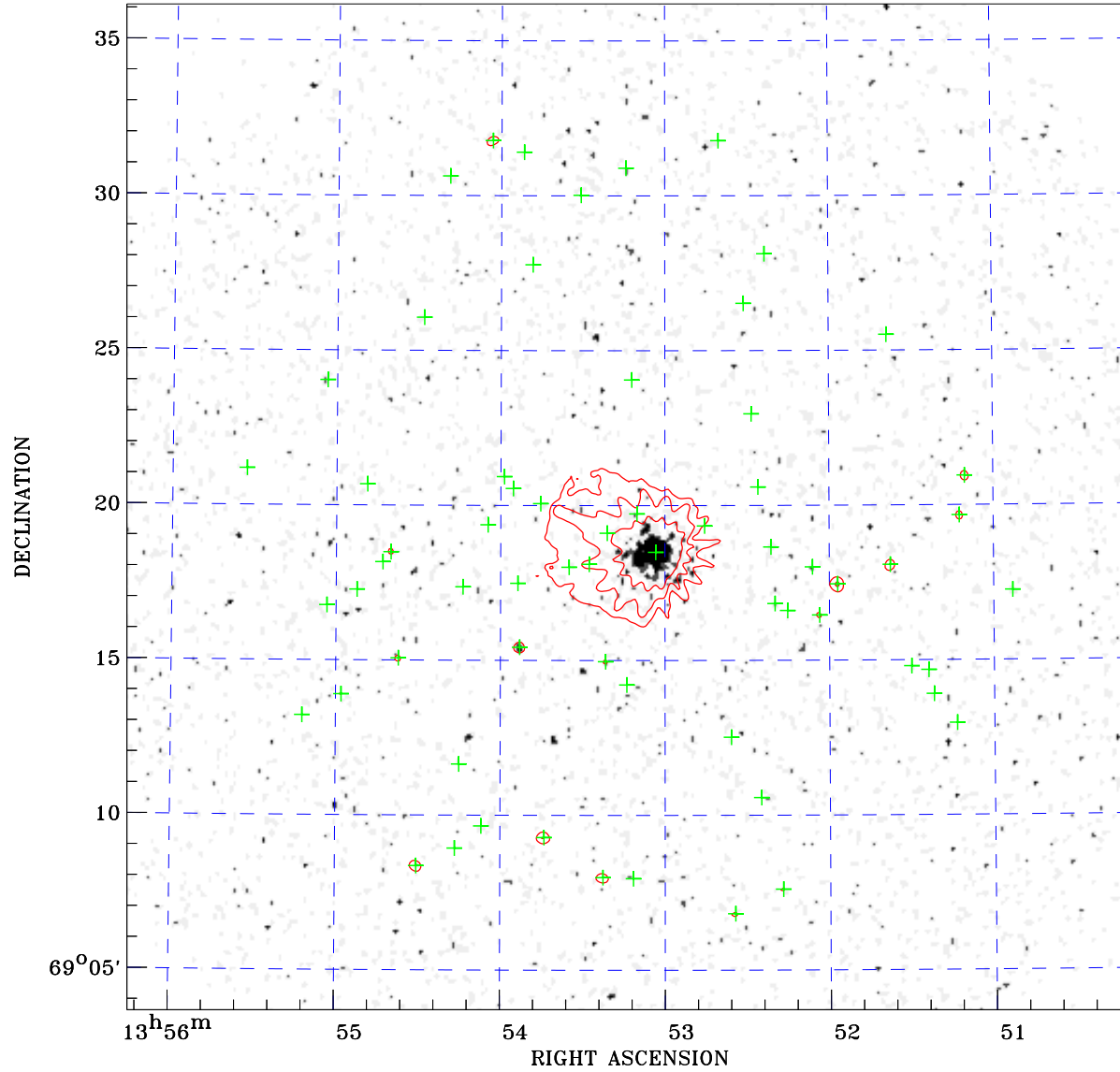


PDF XMM ROSAT image ACDS V10.0



ROSAT image gray scale (Log) :

$\langle 2.205\text{E-}04$ $\rangle 6.239\text{E-}04$

(counts s⁻¹)

⊙ Epic image contour
levels at 2, 7 and 30 σ

+ Detected Epic sources

Principal Investigator :
Dr Elisa Costantini

XMM target name :
Mrk 279

Observation ID :
0302480501

Epic image :
 α : 13 53 12.81
 δ : +69 19 57.8
Energy band : 0.2–12.0 keV
MOS1 : 41261 s
MOS2 : 44914 s
PN : 42109 s

Contour levels (counts) :
2 σ :4.116E+00 7 σ :1.255E+01
30 σ 5.138E+01

Nearest ROSAT image
from Epic image center :
Observation : 701585h
Instrument : HRI
 α : 13 53 25.24
 δ : +69 16 59.2

Other ROSAT images :
None

XMM SSC
Apr 19 11:19:24 2019