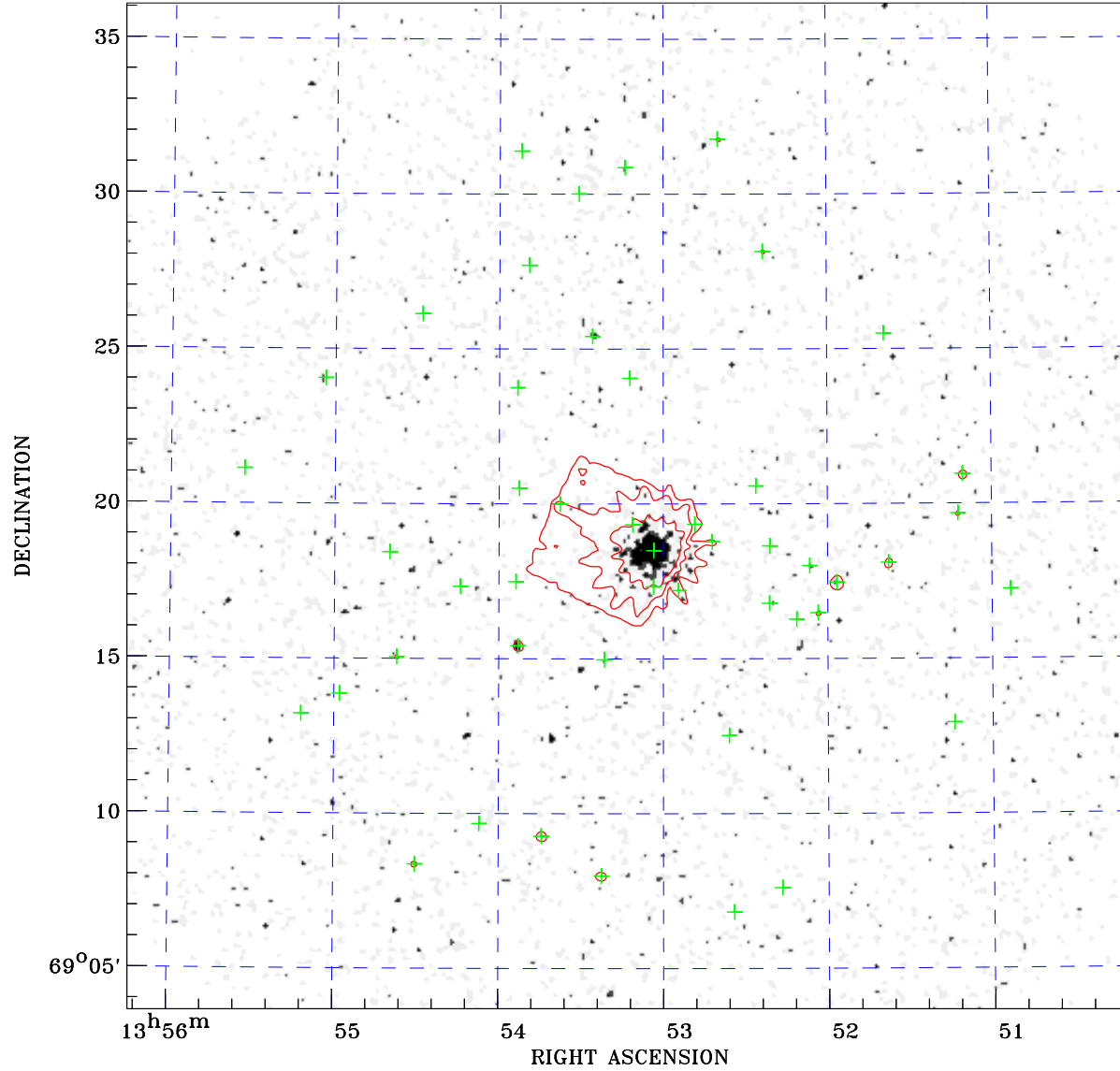



# PDF XMM ROSAT image ACDS V10.0



ROSAT image gray scale (Log) :  
  
 $\langle 2.216\text{E-}04$   $\rangle 5.962\text{E-}04$   
(counts s<sup>-1</sup>)

⊙ Epic image contour  
levels at 2, 7 and 30 $\sigma$

+ Detected Epic sources

Principal Investigator :  
Dr Elisa Costantini

XMM target name :  
Mrk 279

Observation ID :  
0302480601

Epic image :  
 $\alpha$  : 13 53 12.20  
 $\delta$  : +69 19 56.5  
Energy band : 0.2–12.0 keV  
MOS1 : 21109 s  
MOS2 : 23808 s  
PN : 25134 s

Contour levels (counts) :  
2 $\sigma$  :2.746E+00 7 $\sigma$  :8.393E+00  
30 $\sigma$  :3.437E+01

Nearest ROSAT image  
from Epic image center :  
Observation : 701585h  
Instrument : HRI  
 $\alpha$  : 13 53 25.24  
 $\delta$  : +69 16 59.2

Other ROSAT images :  
None

XMM SSC  
May 9 17:01:22 2019