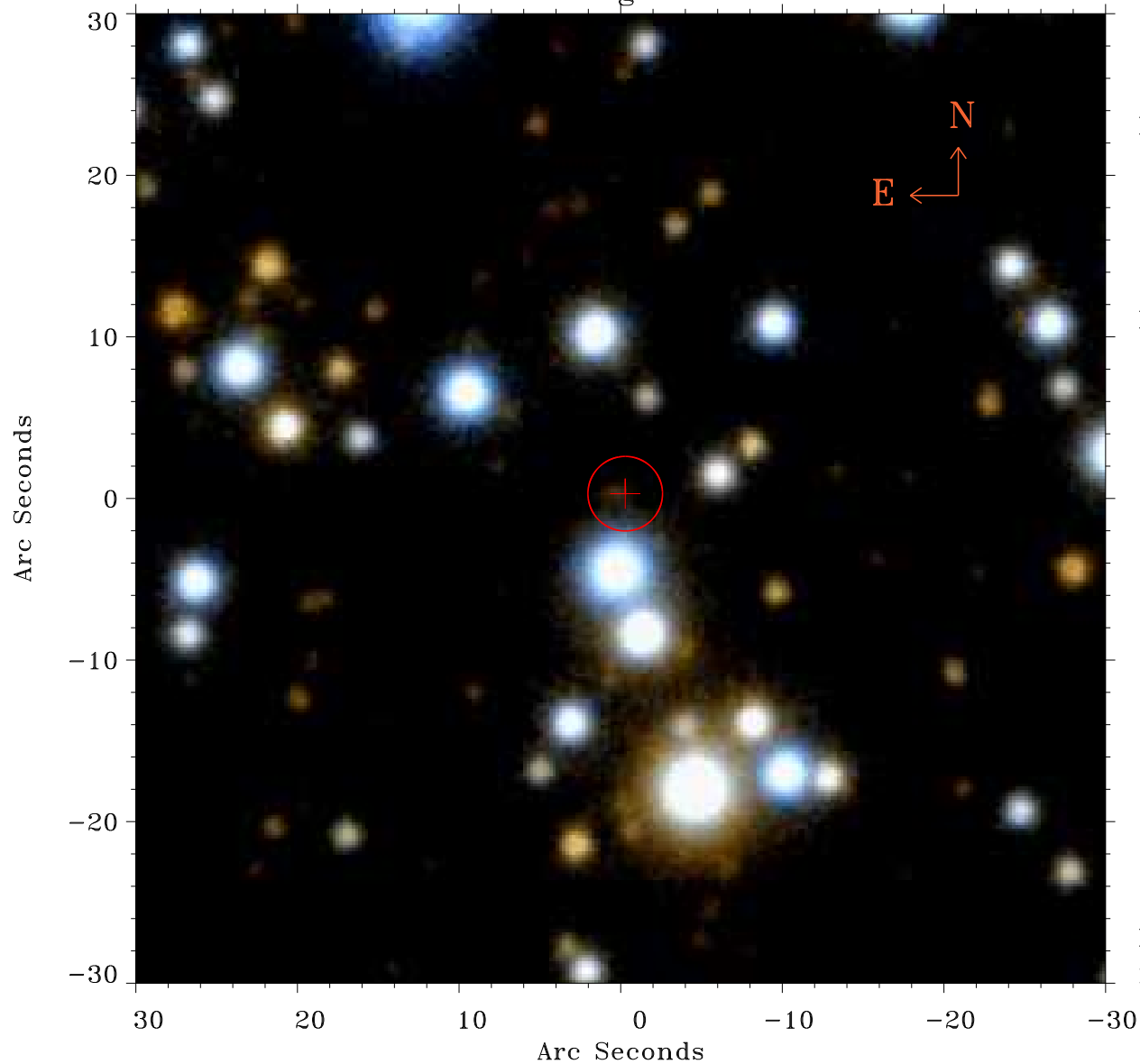


# EPIC source finding chart ACDS V10.0



Principal Investigator :

Dr Gerd Puehlhofer

XMM target name :

HESS J1834-087

OBS ID : 302560301

Source number : 16

X-ray coordinates :

$\alpha$  : 18 34 55.63

$\delta$  : -08 55 48.6

Center coordinates :

$\alpha$  : 18 34 55.64

$\delta$  : -08 55 48.7

Plate reference :

Origin : PanSTARRS-DR1

Color coding :

z band ●

(z+g)/2 ●

g band ●

Error:

R90 : 2.3 arsec

XMM SSC

May 3 15:20:43 2019