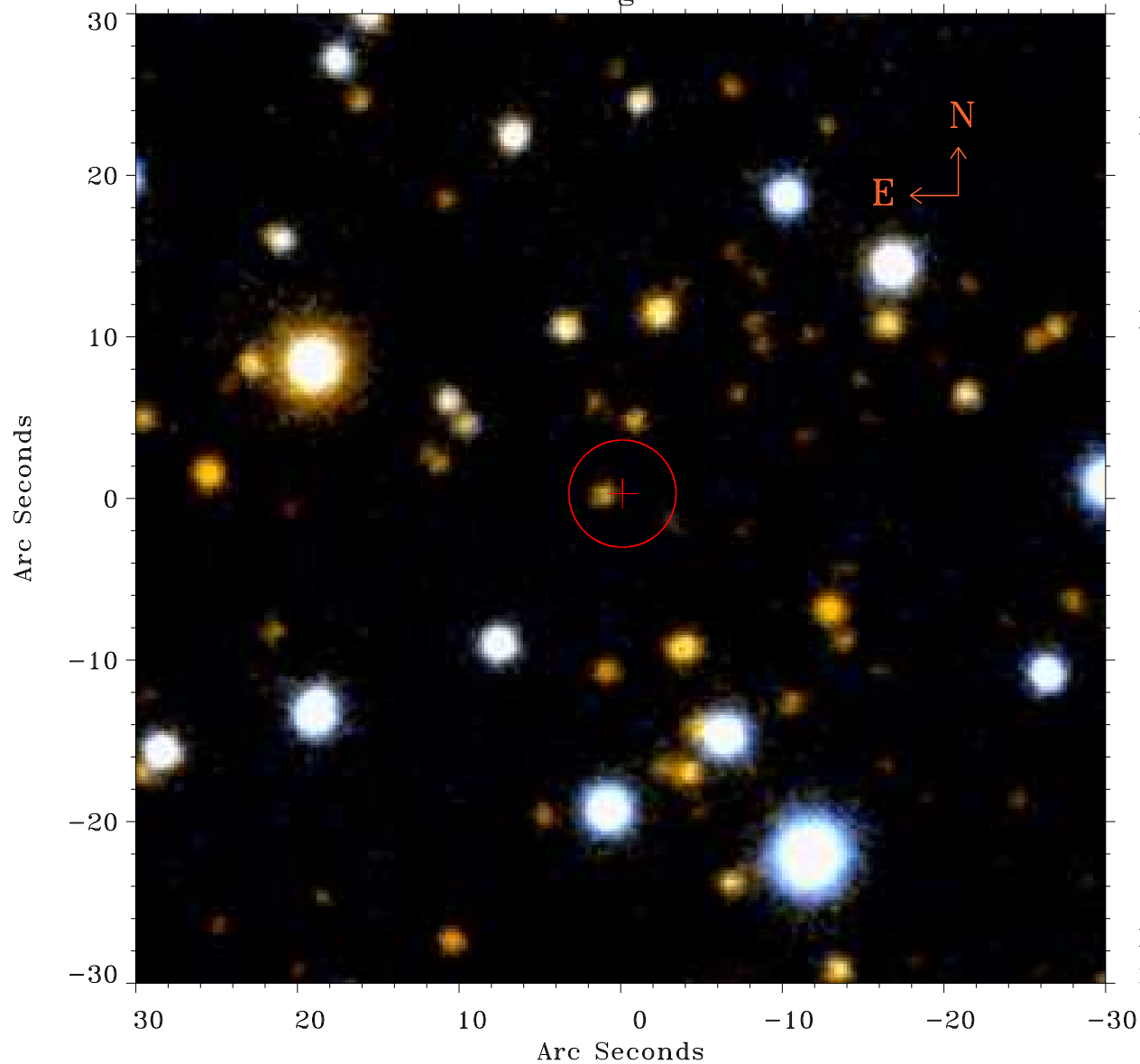


# EPIC source finding chart ACDS V10.0



Principal Investigator :

Dr Gerd Puehlhofer

XMM target name :

HESS J1834-087

OBS ID : 302560301

Source number : 31

X-ray coordinates :

$\alpha$  : 18 35 02.48

$\delta$  : -08 48 47.5

Center coordinates :

$\alpha$  : 18 35 02.48

$\delta$  : -08 48 47.6

Plate reference :

Origin : PanSTARRS-DR1

Color coding :

z band ●

(z+g)/2 ●

g band ●

Error:

R90 : 3.3 arcsec

XMM SSC

May 3 15:20:47 2019