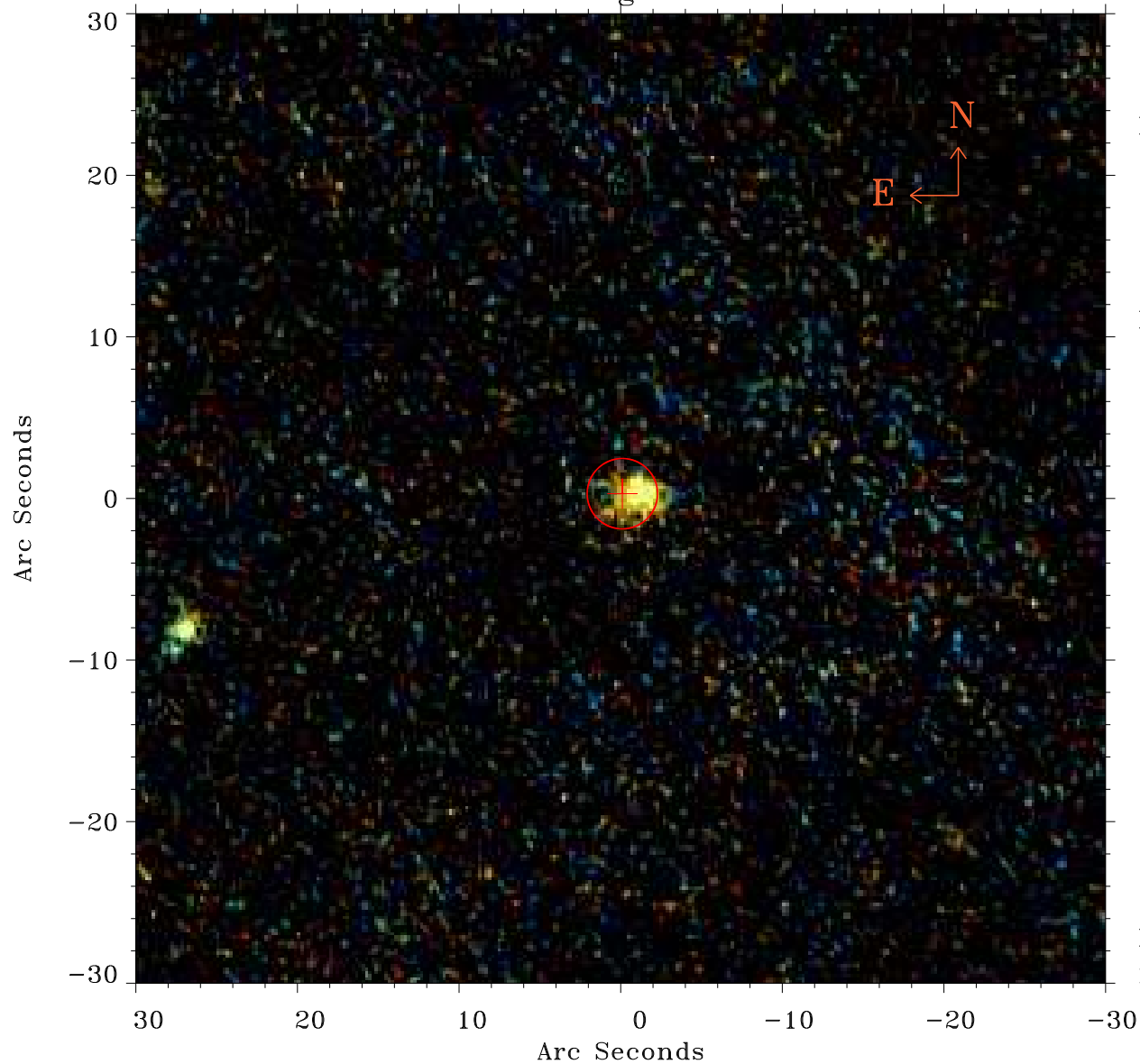


# EPIC source finding chart ACDS V10.0



Principal Investigator :

Dr Richard Mushotzky

XMM target name :

LH-NW2

OBS ID : 303260501

Source number : 67

X-ray coordinates :

$\alpha$  : 10 33 30.50

$\delta$  : +57 42 25.2

Center coordinates :

$\alpha$  : 10 33 30.49

$\delta$  : +57 42 25.1

Plate reference :

Origin : PanSTARRS-DR1

Color coding :

z band ●

(z+g)/2 ●

g band ●

Error:

R90 : 2.2 arsec

XMM SSC

May 3 22:59:02 2019