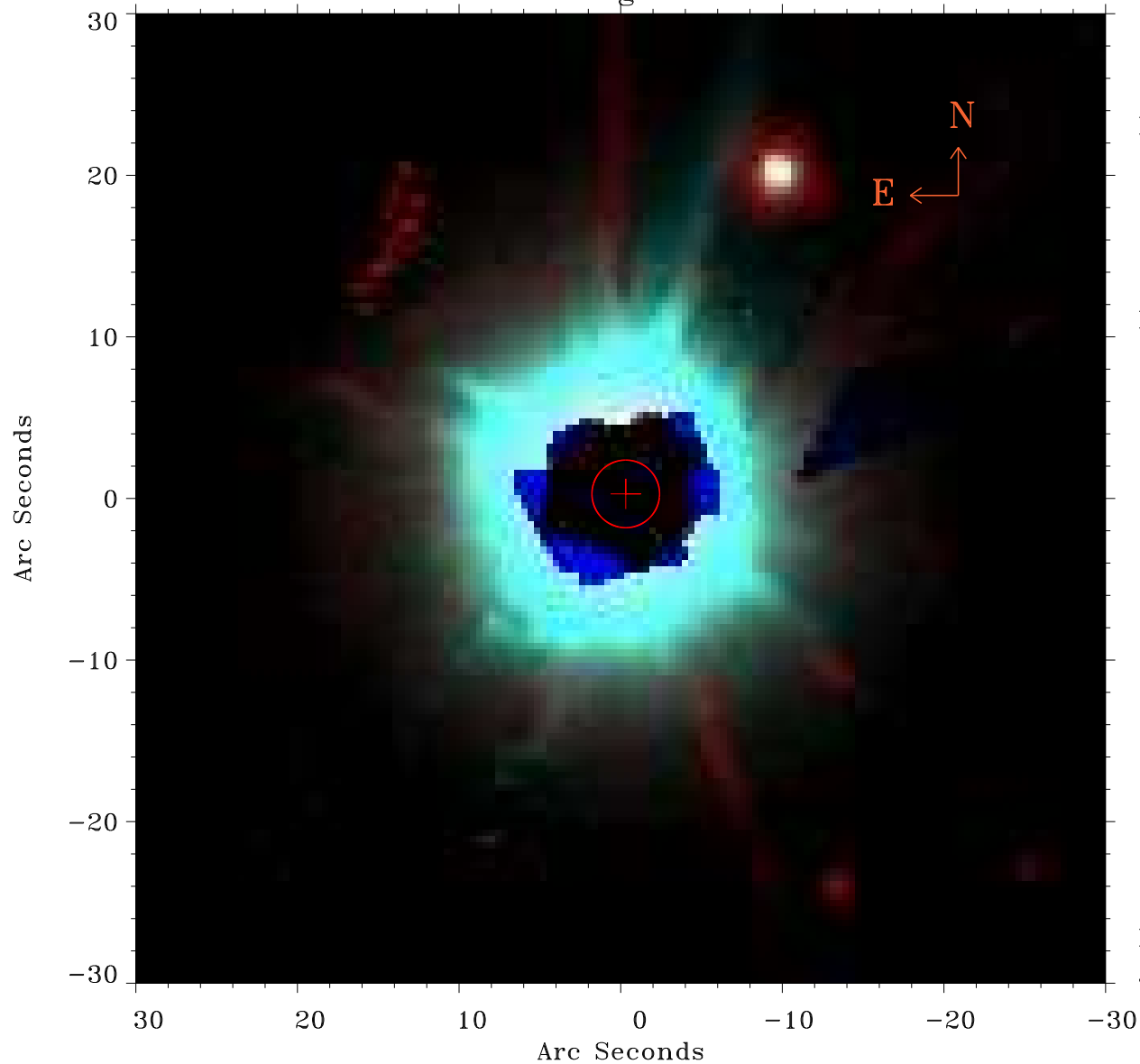


# EPIC source finding chart ACDS V10.0



Principal Investigator :

Dr Kenji Hamaguchi

XMM target name :

EK Cep

OBS ID : 303710201

Source number : 1

X-ray coordinates :

$\alpha$  : 21 41 21.52

$\delta$  : +69 41 33.5

Center coordinates :

$\alpha$  : 21 41 21.50

$\delta$  : +69 41 33.6

Plate reference :

Origin : PanSTARRS-DR1

Color coding :

z band ●

(z+g)/2 ●

g band ●

Error:

R90 : 2.1 arsec

XMM SSC

Jan 29 15:40:28 2025