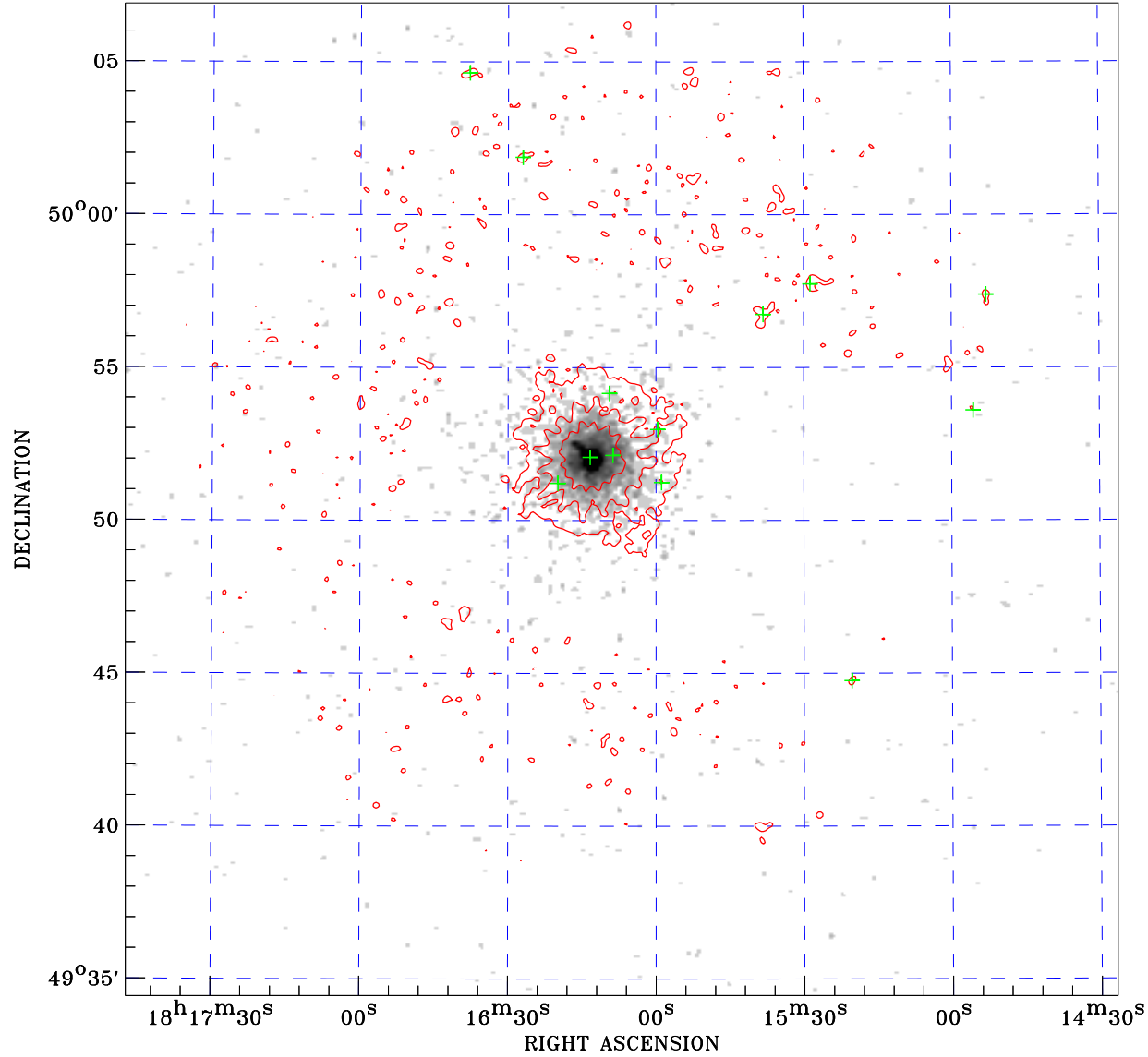



# PDF XMM ROSAT image ACDS V10.0



ROSAT image gray scale (Log) :  
  
 < 0.000E+00 > 2.068E-02  
 (counts s<sup>-1</sup>)

⊙ Epic image contour  
 levels at 2, 7 and 30 $\sigma$

+ Detected Epic sources

Principal Investigator :  
 Dr Axel Schwoppe

XMM target name :  
 AM Her

Observation ID :  
 0305240401

Epic image :  
 $\alpha$  : 18 16 06.94  
 $\delta$  : +49 50 41.9  
 Energy band : 0.2–12.0 keV  
 MOS1 : 4550 s  
 MOS2 : 4446 s  
 PN : 0 s

Contour levels (counts) :  
 2 $\sigma$  : 4.787E-01 7 $\sigma$  : 1.383E+00  
 30 $\sigma$  : 5.542E+00

Nearest ROSAT image  
 from Epic image center :  
 Observation : 300497h  
 Instrument : HRI  
 $\alpha$  : 18 16 21.87  
 $\delta$  : +49 50 35.7

Other ROSAT images :  
 None

XMM SSC  
 May 1 22:52:43 2019