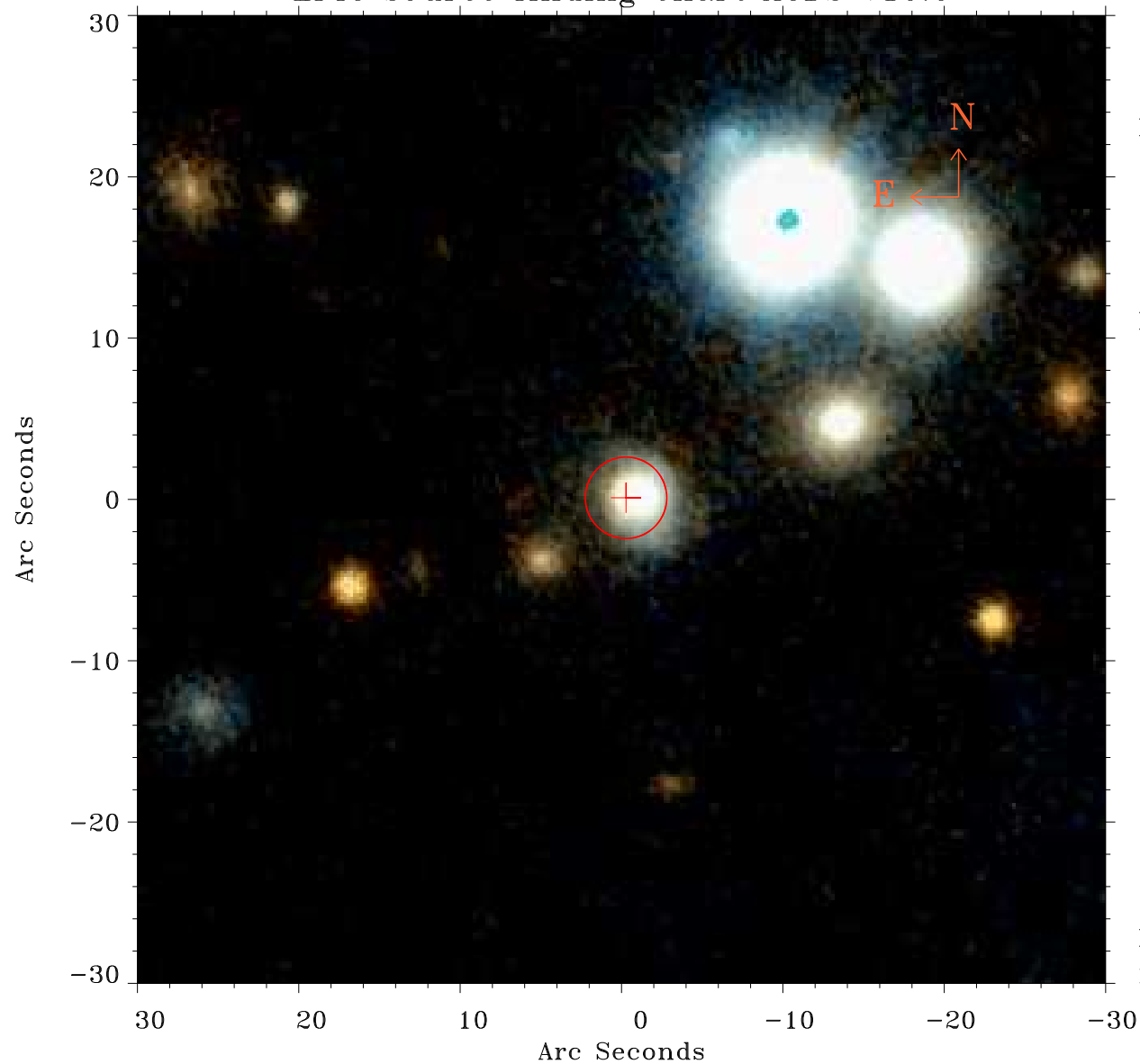


EPIC source finding chart ACDS V10.0



Principal Investigator :

Dr Stefanie Komossa

XMM target name :

SDSS1706+60

OBS ID : 305750301

Source number : 1

X-ray coordinates :

α : 17 06 01.97

δ : +60 17 32.0

Center coordinates :

α : 17 06 01.98

δ : +60 17 32.1

Plate reference :

Origin : PanSTARRS-DR1

Color coding :

z band ●

(z+g)/2 ●

g band ●

Error:

R90 : 2.5 arsec

XMM SSC

May 2 22:08:24 2019