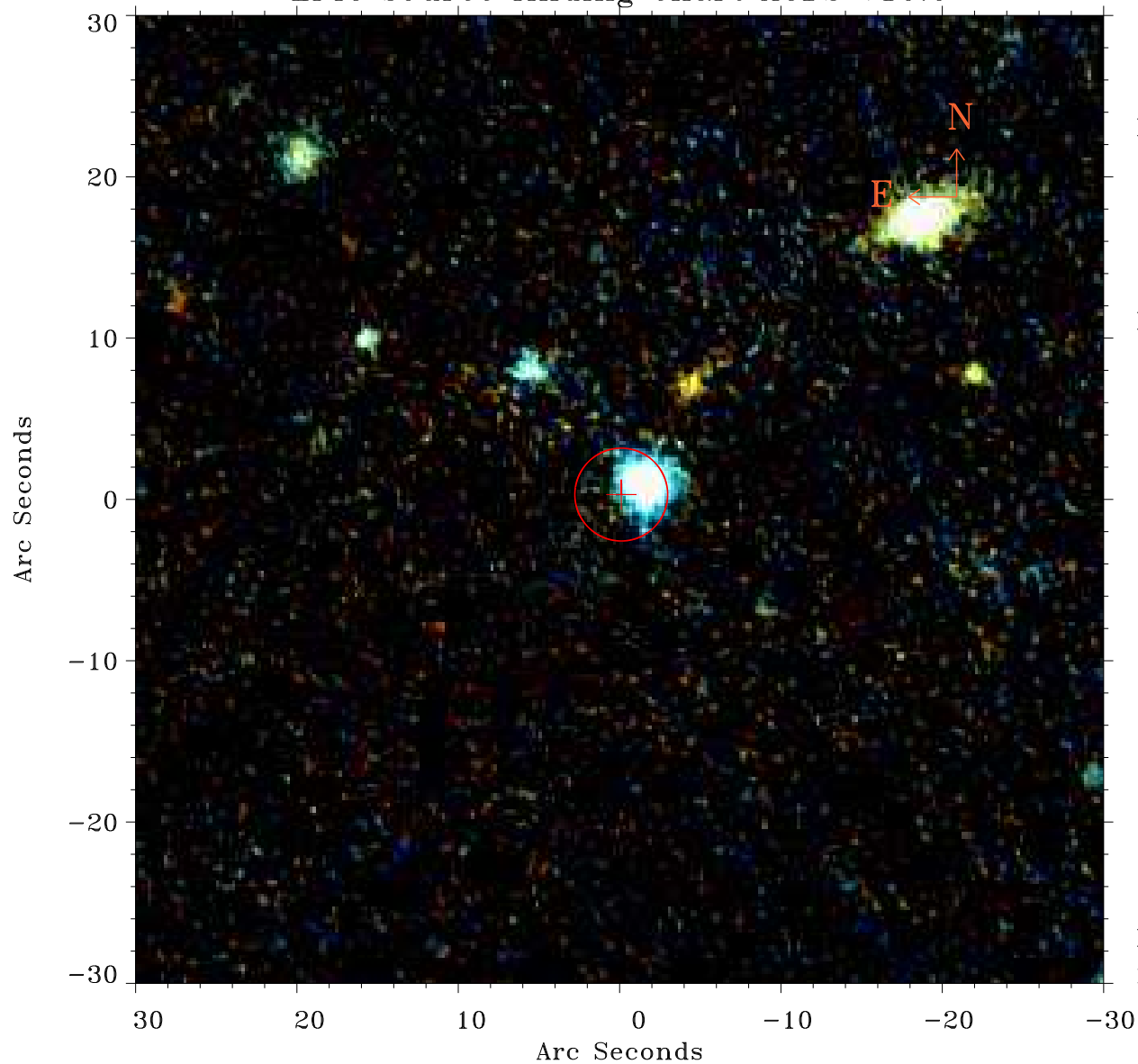


# EPIC source finding chart ACDS V10.0



Principal Investigator :

Dr Stefanie Komossa

XMM target name :

SDSS1706+60

OBS ID : 305750301

Source number : 2

X-ray coordinates :

$\alpha$  : 17 05 48.41

$\delta$  : +60 19 07.5

Center coordinates :

$\alpha$  : 17 05 48.40

$\delta$  : +60 19 07.5

Plate reference :

Origin : PanSTARRS-DR1

Color coding :

z band ●

(z+g)/2 ●

g band ●

Error:

R90 : 2.9 arsec

XMM SSC

May 2 22:08:19 2019