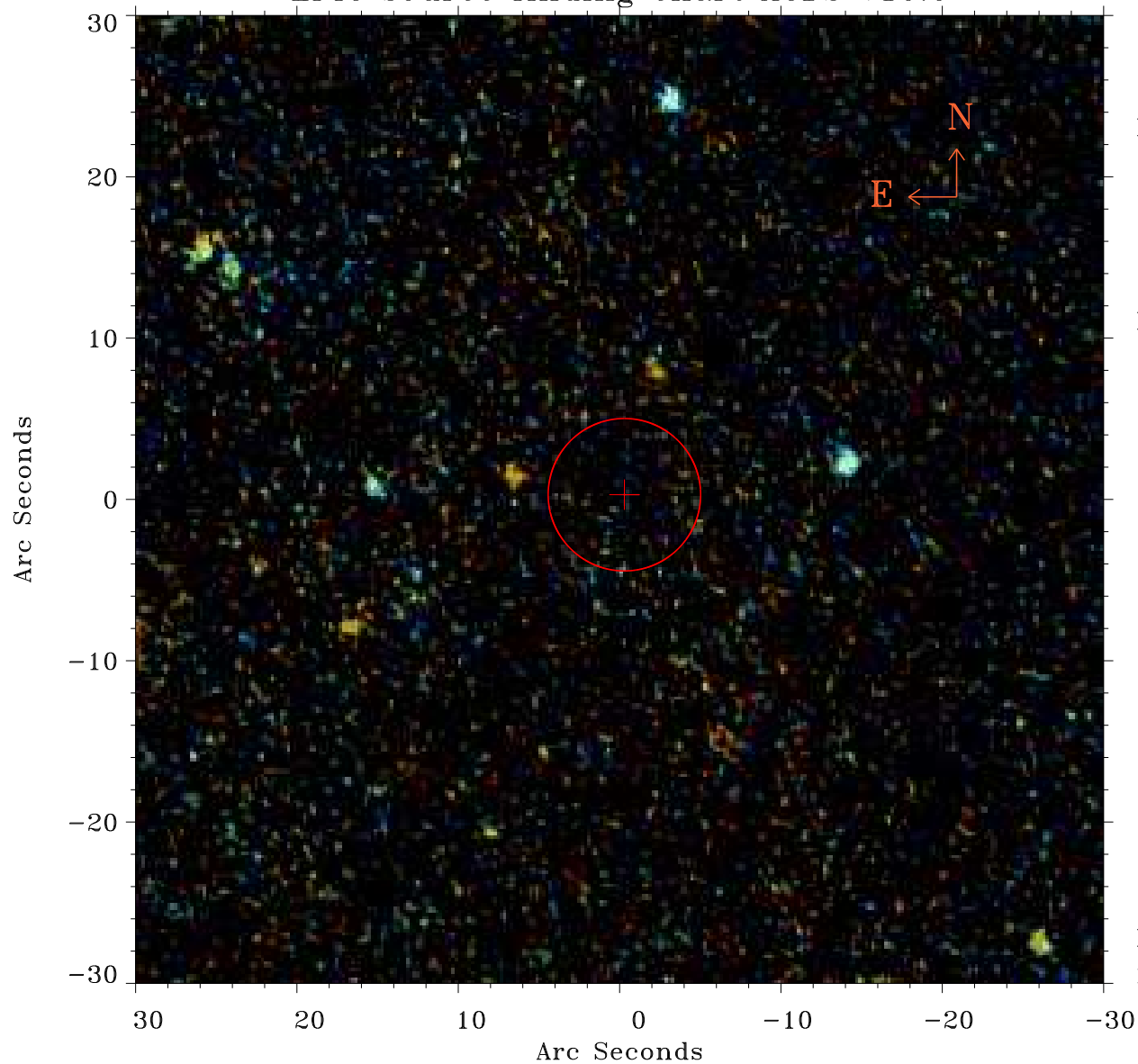


EPIC source finding chart ACDS V10.0



Principal Investigator :

Dr Stefanie Komossa

XMM target name :

SDSS1706+60

OBS ID : 305750301

Source number : 6

X-ray coordinates :

α : 17 04 54.12

δ : +60 21 25.7

Center coordinates :

α : 17 04 54.13

δ : +60 21 25.6

Plate reference :

Origin : PanSTARRS-DR1

Color coding :

z band ●

(z+g)/2 ●

g band ●

Error:

R90 : 4.7 arcsec

XMM SSC

May 2 22:08:04 2019