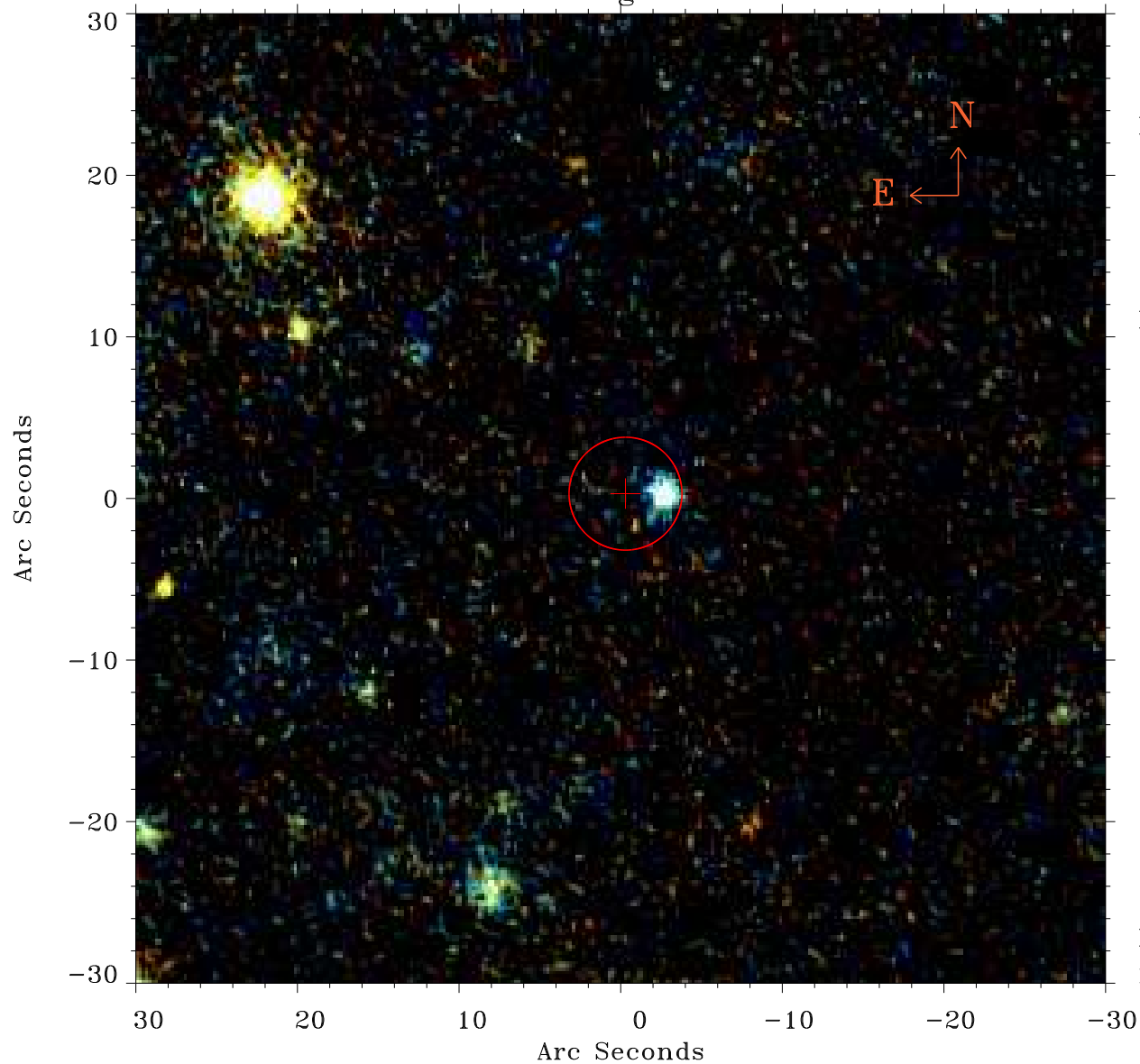


EPIC source finding chart ACDS V10.0



Principal Investigator :

Dr Stefanie Komossa

XMM target name :

SDSS1706+60

OBS ID : 305750301

Source number : 10

X-ray coordinates :

α : 17 06 54.47

δ : +60 19 58.9

Center coordinates :

α : 17 06 54.48

δ : +60 19 58.8

Plate reference :

Origin : PanSTARRS-DR1

Color coding :

z band ●

(z+g)/2 ●

g band ●

Error:

R90 : 3.5 arcsec

XMM SSC

May 2 22:08:36 2019