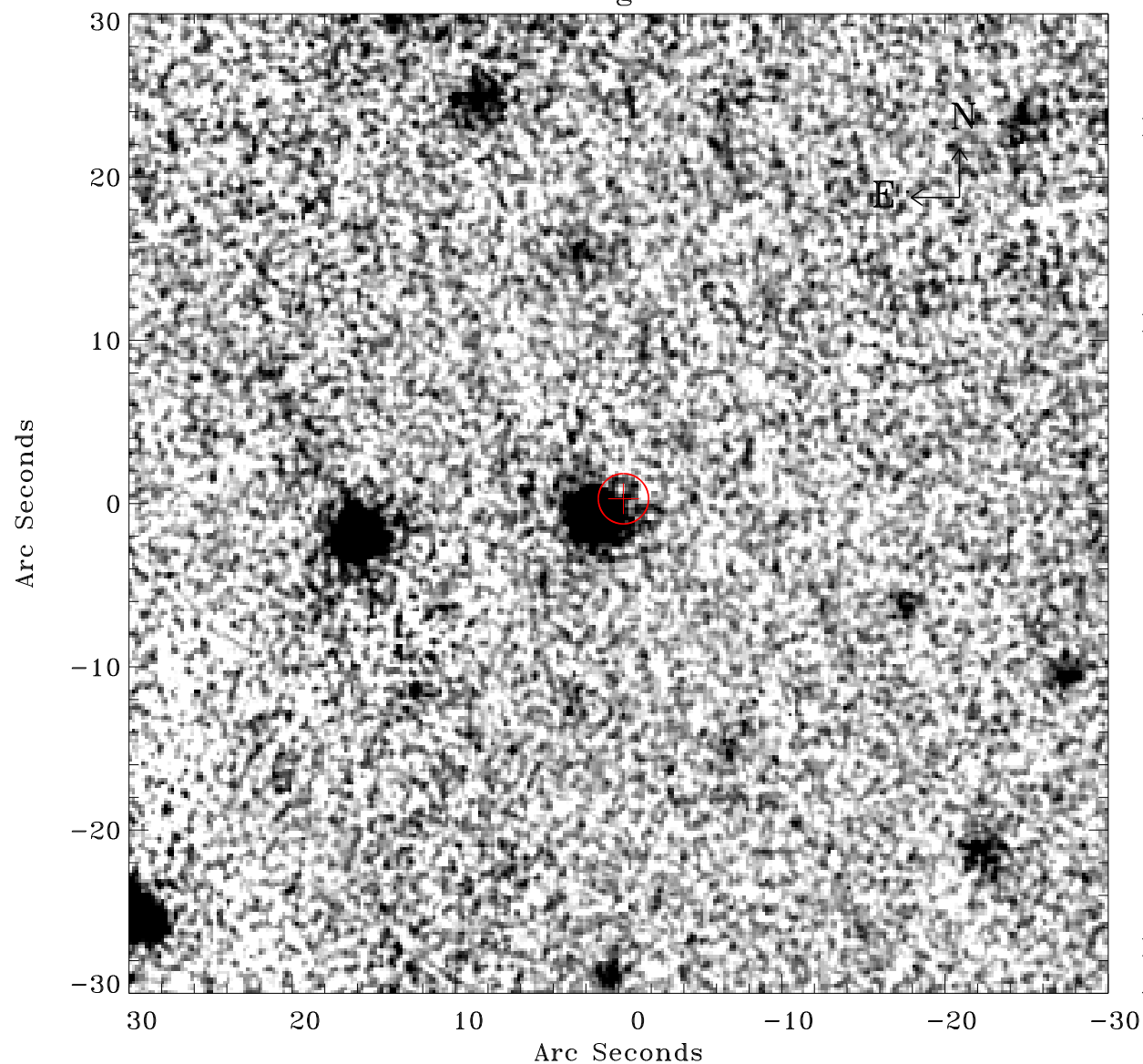


# EPIC source finding chart ACDS V10.0



Principal Investigator :

Prof Trevor Ponman

XMM target name :

MZ 10451

OBS ID : 305800901

Source number : 6

X-ray coordinates :

$\alpha$  : 02 29 39.10

$\delta$  : -29 26 36.2

Center coordinates :

$\alpha$  : 02 29 39.10

$\delta$  : -29 26 36.3

Plate reference :

Origin : CDS HIPs Network

Plate : PanSTARRS DR1 g

Pixel : 0.20 "/pix

Error circle :

$R_{90}$  (") : 1.5

XMM SSC

Apr 19 23:55:43 2019