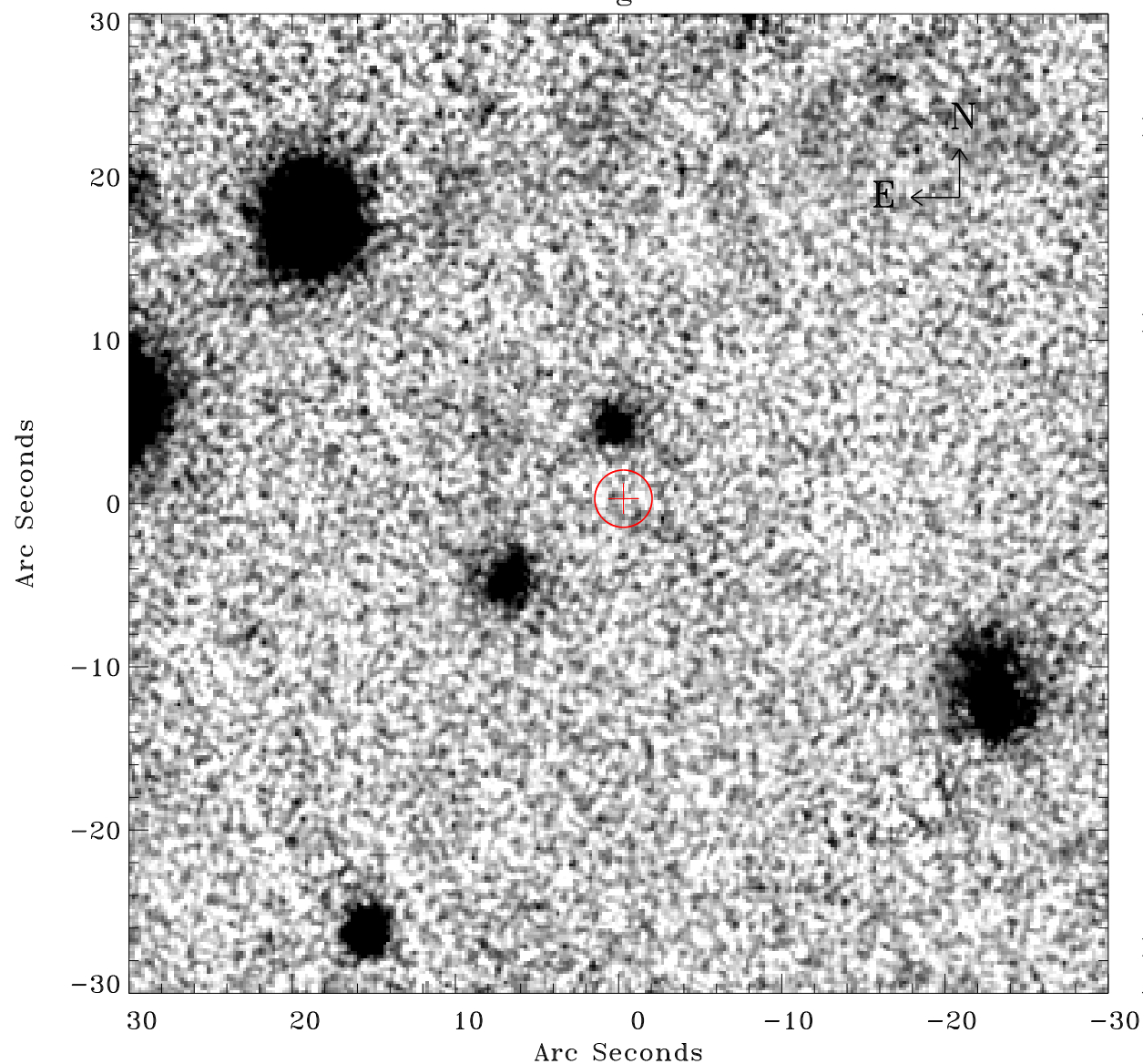


# EPIC source finding chart ACDS V10.0



Principal Investigator :

Prof Trevor Ponman

XMM target name :

MZ 10451

OBS ID : 305800901

Source number : 30

X-ray coordinates :

$\alpha$  : 02 29 57.43

$\delta$  : -29 30 08.6

Center coordinates :

$\alpha$  : 02 29 57.44

$\delta$  : -29 30 08.7

Plate reference :

Origin : CDS HIPs Network

Plate : PanSTARRS DR1 g

Pixel : 0.20 "/pix

Error circle :

$R_{90}$  (") : 1.8

XMM SSC

Apr 19 23:56:32 2019