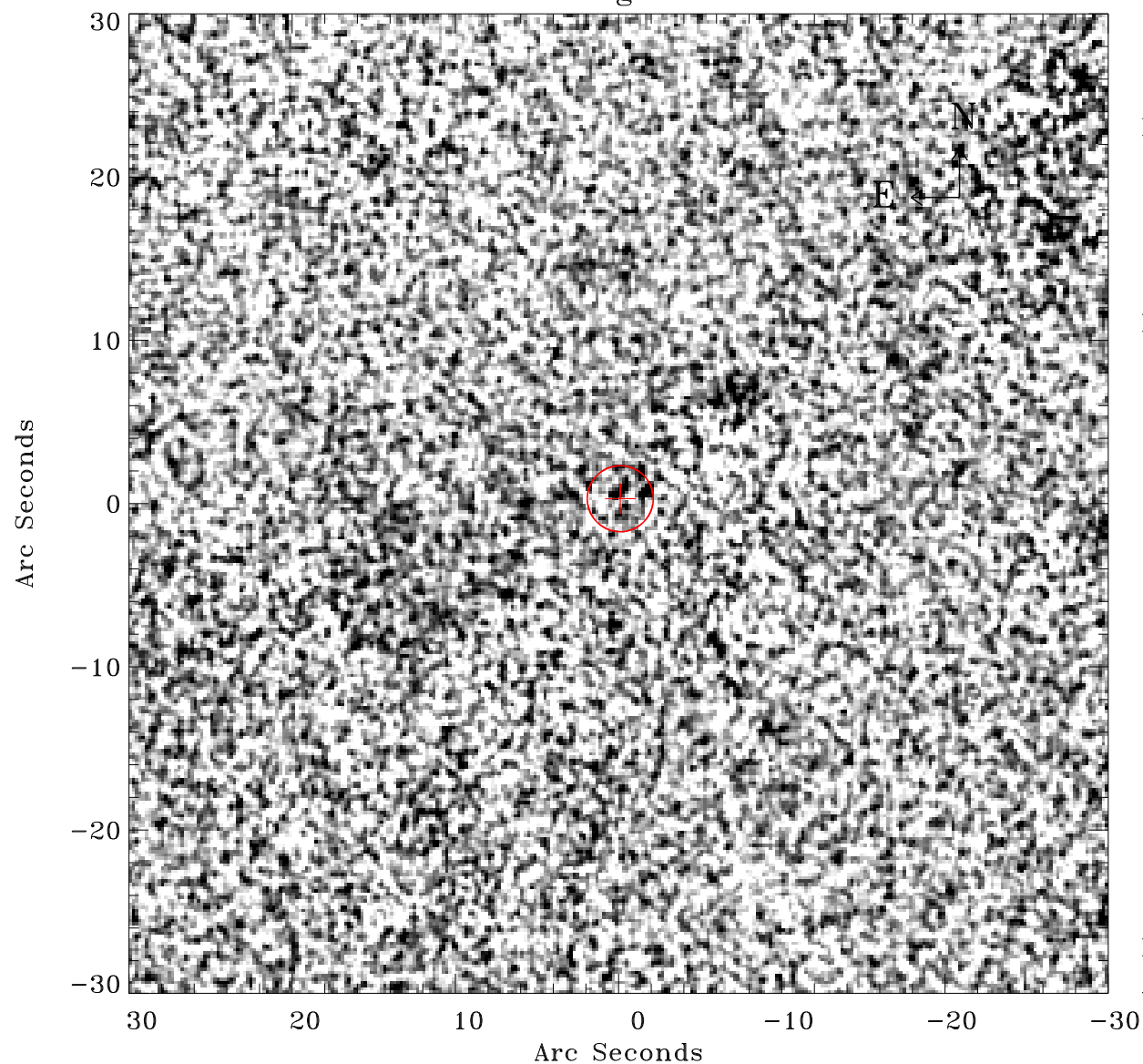


# EPIC source finding chart ACDS V10.0



Principal Investigator :

Prof Trevor Ponman

XMM target name :

MZ 10451

OBS ID : 305800901

Source number : 31

X-ray coordinates :

$\alpha$  : 02 29 08.48

$\delta$  : -29 48 44.0

Center coordinates :

$\alpha$  : 02 29 08.47

$\delta$  : -29 48 44.1

Plate reference :

Origin : CDS HIPs Network

Plate : PanSTARRS DR1 g

Pixel : 0.20 "/pix

Error circle :

$R_{90}$  (") : 2.0

XMM SSC

Apr 19 23:54:25 2019