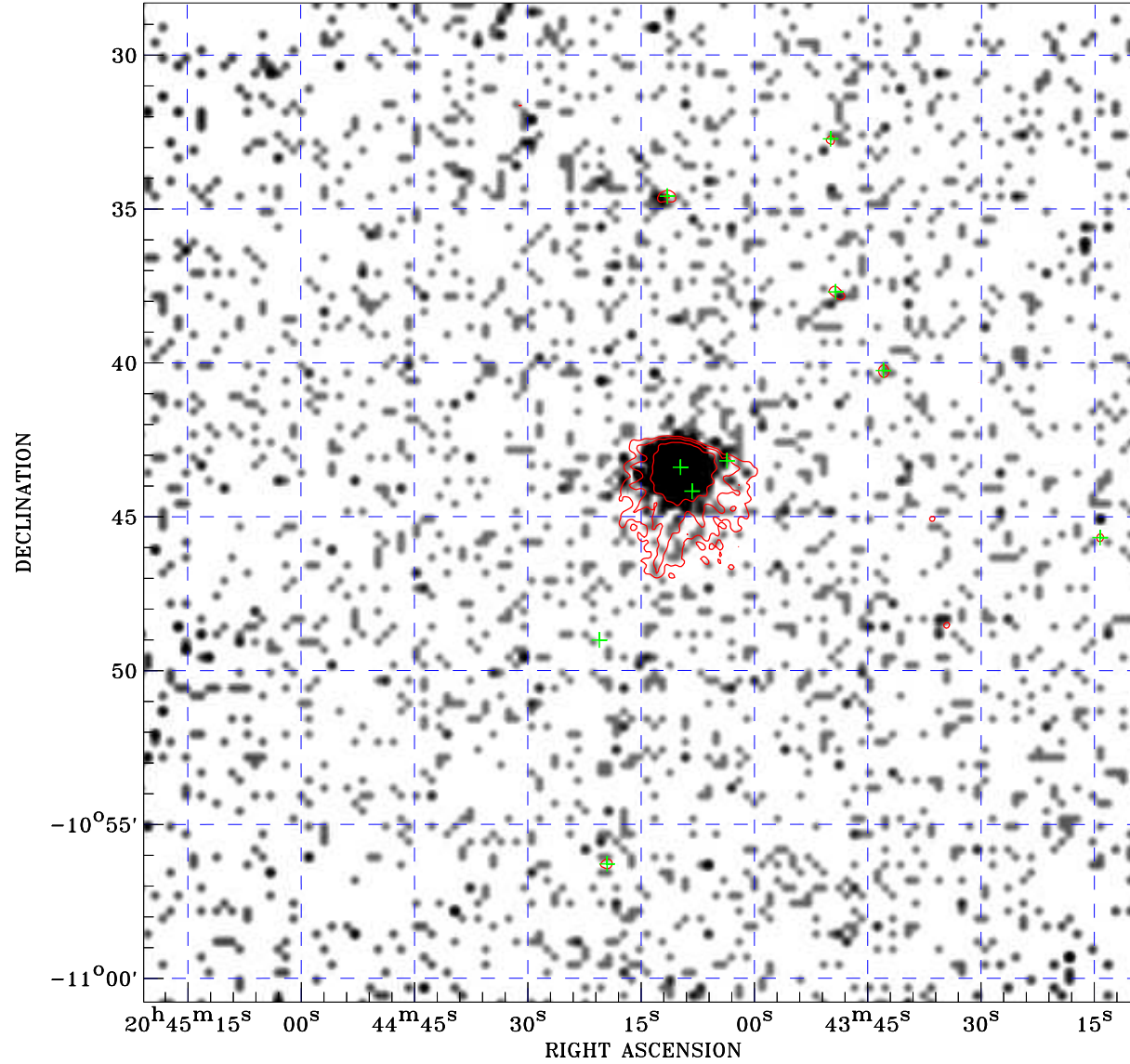



# PDF XMM ROSAT image ACDS V10.0



ROSAT image gray scale (Log) :  
  
 $\langle 1.299\text{E-}04$   $\rangle 1.298\text{E-}03$   
(counts s<sup>-1</sup>)

⊙ Epic image contour  
levels at 2, 7 and 30 $\sigma$

+ Detected Epic sources

Principal Investigator :  
Dr Massimo Cappi

XMM target name :  
Mrk509

Observation ID :  
0306090101

Epic image :  
 $\alpha$  : 20 44 14.72  
 $\delta$  : -10 44 32.6  
Energy band : 0.2-12.0 keV  
MOS1 : 3871 s  
MOS2 : 3870 s  
PN : 3887 s

Contour levels (counts) :  
2 $\sigma$  :5.760E-01 7 $\sigma$  :1.876E+00  
30 $\sigma$  :7.858E+00

Nearest ROSAT image  
from Epic image center :  
Observation : 700105p  
Instrument : PSPCB  
 $\alpha$  : 20 44 21.83  
 $\delta$  : -10 46 12.2

Other ROSAT images :  
None

XMM SSC  
Jan 20 02:32:01 2025